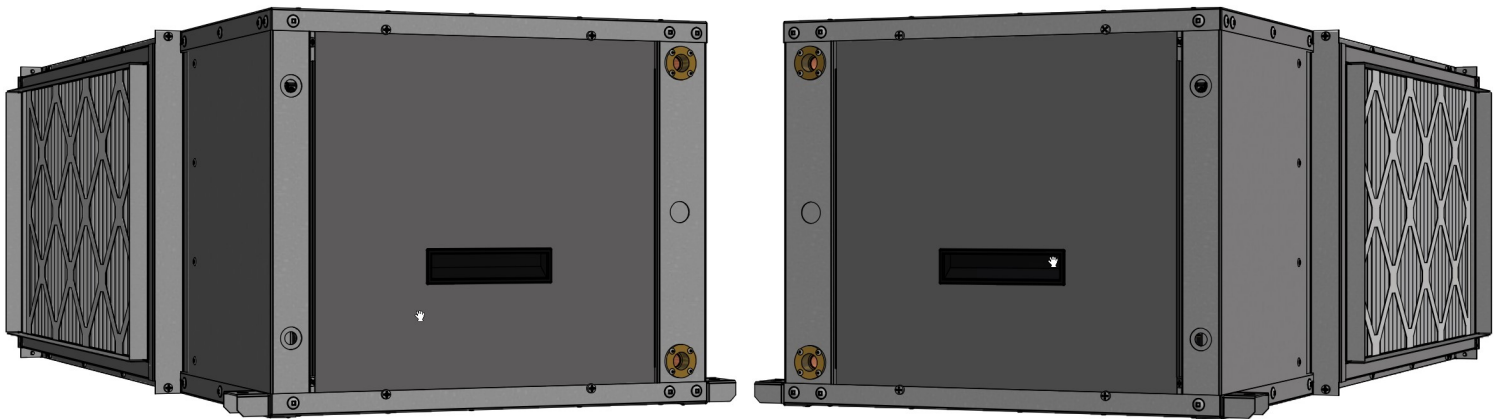




# Engineering Specification

**RH-09-HAC-P-\*L-\*SDE\*F**  
**Liquid to Air Heat Pump**  
**60 Hz**

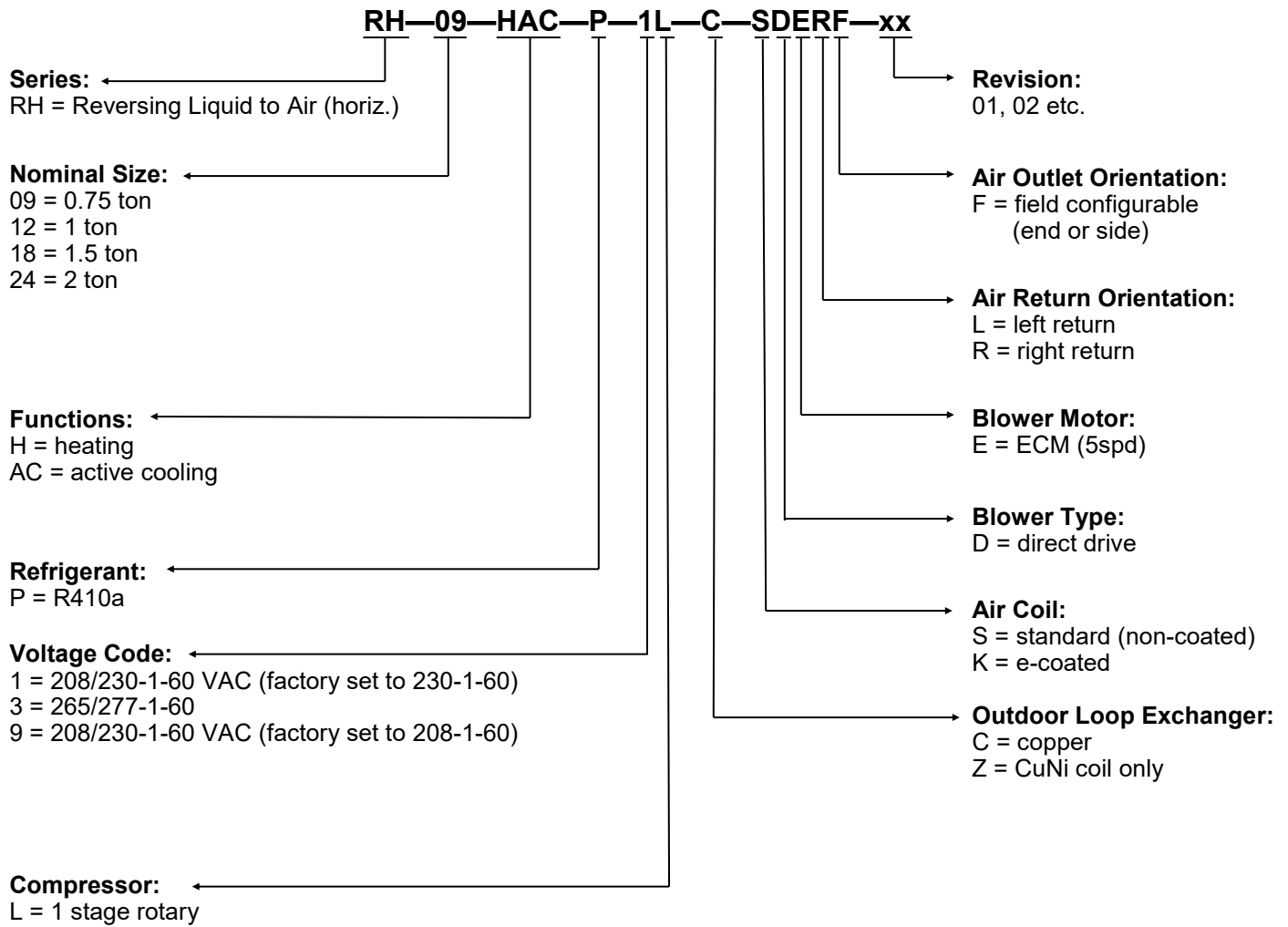


Maritime Geothermal Ltd.  
P.O. Box 2555, 170 Plantation Road  
Petitcodiac, NB E4Z 6H4  
(506) 756-8135



info@nordicghp.com  
www.nordicghp.com  
001693SPC-03

# Model Nomenclature



**APPLICATION TABLE**

MODEL	FUNCTION	REFRIGERANT	VOLTAGE	COMPRESSOR	OUTDOOR COIL	FAN/CASE	REVISIONS				
RH-09	HAC	P	1 3 9	L	C Z	SDELF SDERF	04	05			

This manual applies only to the models and revisions listed in this table.

Maritime Geothermal Ltd. has a continuous improvement policy and reserves the right to modify specification data at any time without prior notice .

# Design Features

---

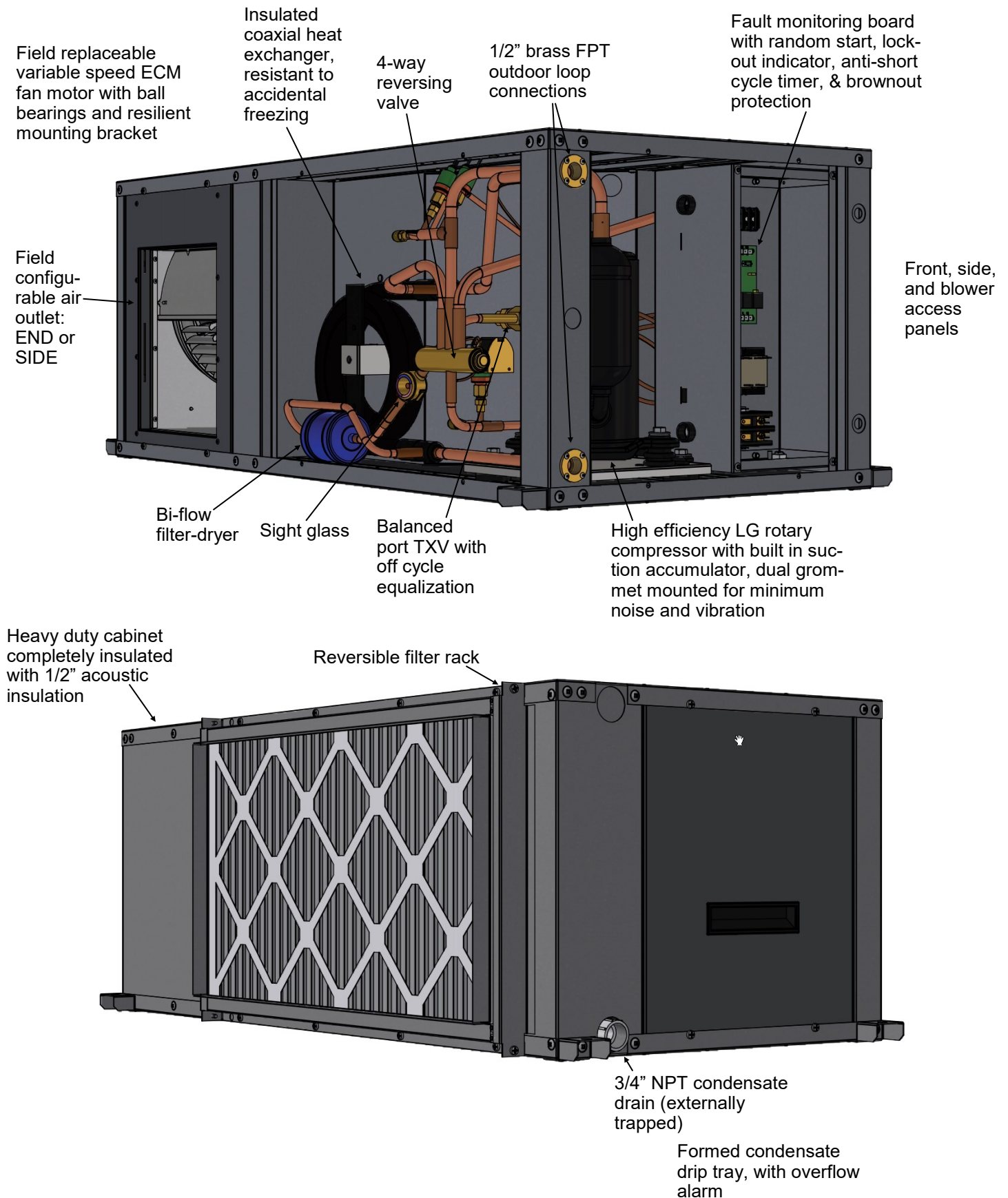
- TUV certified (CSA 22.2 No 236-05)
- Satin galvanized steel cabinet, partial powder coat finish
- Acoustically insulated (1/2")
- 4 corner hanging brackets for suspension applications
- ECM blower motor with single side service access and 5 torque settings to adjust airflow
- Field configurable fan outlet position: end or side
- Optional plenum heater, externally mounted
- Reversible air filter rack
- Formed condensate drip tray
- Condensate drain with 3/4" NPT connection
- Refrigeration service ports located inside unit (1/4" Schrader)
- Insulated coaxial heat exchanger and piping, available in copper or cupro-nickel (CuNi)
- 1/2" brass FPT fittings for loop connections
- Single stage rotary compressor, with built in suction line accumulator
- Dual-grommet-mounted compressor for reduced noise and vibration
- Liquid line filter-dryer
- Liquid line sight glass
- Balanced port thermostatic expansion valve (TXV) with internal bleed
- 4-way reversing valve
- High and low pressure safety controls
- Control board with random start, anti-short cycle timer, auto-retry and permanent lockout mode
- Brownout and condensate overflow protection standard

# Available Accessories

---

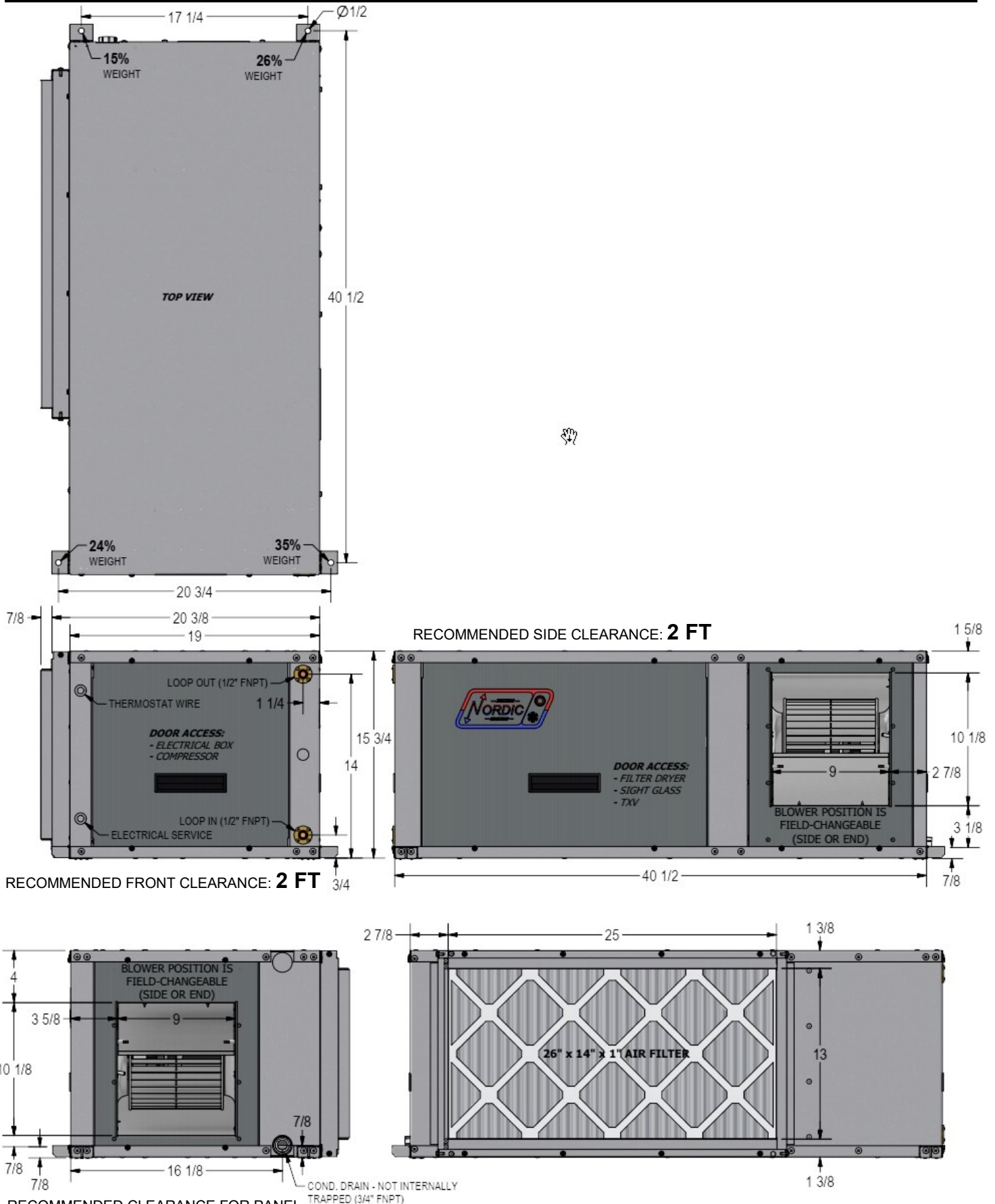
- Programmable thermostat, Wifi and standard versions
- Anti-vibration pad for under unit
- Compressor sound jacket
- Electric plenum heaters 5 / 7 / 10 / 15 / 20 kW, for external mounting

# Design Features



# Dimensions (Left Return)

All dimensions in inches.

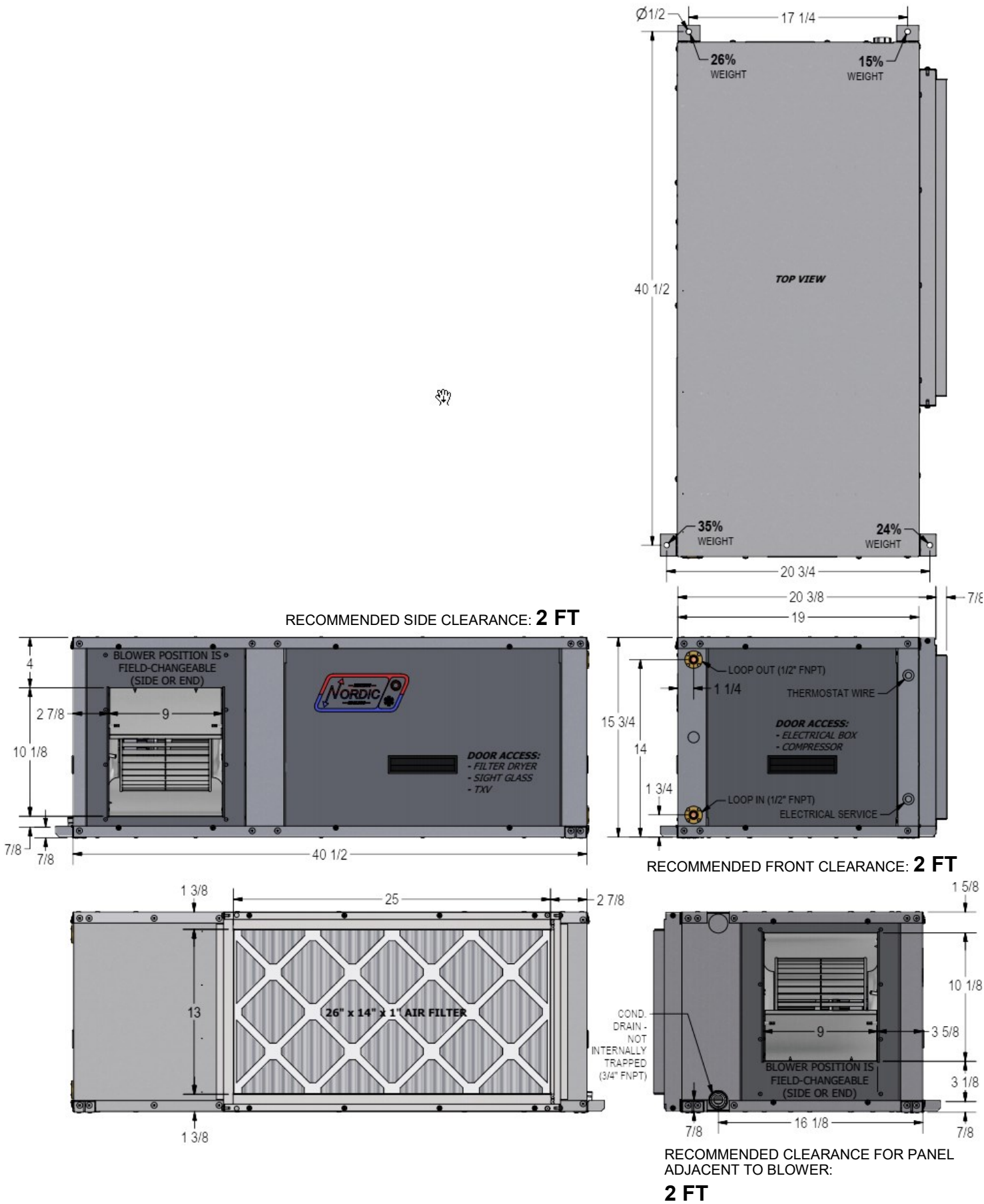


RECOMMENDED CLEARANCE FOR PANEL ADJACENT TO BLOWER:

**2 FT**

# Dimensions (Right Return)

All dimensions in inches.



# Specifications

Electrical Specifications											
Code	Power Supply			Compressor		Fan	Outd. Circ.	FLA	MCA	Maximum Fuse/Breaker	Minimum Wire Size
	V-ø-Hz	MIN	MAX	RLA	LRA	RLA	Max A	Amps	Amps	Amps	ga
1	208/230-1-60	187	253	4.4	20	2.8	1.5	8.9	10.0	15	#14-2
3	265/277-1-60	226	304	3.4	21	2.6	-	6.2	7.1	15	#14-2
9	208/230-1-60	187	253	4.4	20	2.8	1.5	8.9	10.0	15	#14-2

Refrigerant Charge				
MODEL	lb	kg	Refrigerant	Oil Type
RH-09	1.9	0.86	R410a	POE
- Oil capacity is marked on the compressor label. - Refrigerant charge is subject to revision; actual charge is indicated on the unit nameplate.				

Shipping Information					
MODEL	SHIPPING WEIGHT	HANGING WEIGHT	DIMENSIONS inches (cm)		
	lb (kg)	lb (kg)	L	W	H
RH-09	161 (73)	125 (57)	41 (104)	21 (53)	16 (41)
See <b>Dimensions</b> on preceding pages for RH-series hanger weight distribution.					

Operating Temperature Limits					
Loop	Mode	Parameter	°F	°C	Note
OUTDOOR (ground loop)	Heating (water/open loop)	Minimum ELT	41	5	
	Heating (antifreeze/ground loop)	Minimum ELT	23	-5	Adequate antifreeze concentration required.
	Heating	Maximum ELT	80	27	Reduce flow above this temperature.
	Cooling	Minimum ELT	41	5	Flow reduction may be required.
	Cooling	Maximum ELT	110	43	
INDOOR (air duct)	Heating	Minimum EAT	60	16	Reduce air flow if necessary during heating startup.
	Heating	Maximum EAT	100	38	
	Cooling	Minimum EAT	50	10	
	Cooling	Maximum EAT	100	38	Reduce air flow if necessary during cooling startup.
* Values in this table are for rated liquid and airflow values.					

Loop Pressure Drop Data			Water 104°F		Water 50°F		15% Methanol 32°F		35% prop. glycol 32°F	
			psi	kPa	psi	kPa	psi	kPa	psi	kPa
RH-09	gpm	L/s								
	1.5	0.09	1.4	9.7	1.5	10	1.7	12	2.3	16
	2	0.13	2.4	17	2.6	18	2.9	20	3.6	25
	2.5	0.16	3.6	25	3.9	27	4.1	28	5.5	38
	3	0.19	5.1	35	5.3	37	5.9	41	7.4	51
	3.5	0.22	6.7	46	6.9	48	7.7	53	9.7	67
	4	0.25	8.4	58	8.6	59	9.5	66	12	83

# Standard Capacity Ratings

Standards C13256-1 / ISO13256-1 / ARI 13256-1

Standard Capacity Ratings - <b>Ground Loop Heating*</b>											60Hz
EAT 68°F (20°C) * 15% Methanol by Weight Ground Loop Fluid											ELT 32°F (0°C)
Model Size	Nominal Size	Liquid Flow		Pressure Drop		Airflow		Input Energy	Capacity		COP <sub>H</sub>
	tons	gpm	L/s	psi	kPa	cfm	L/s	Watts	Btu/hr	kW	W/W
09	0.75	2.5	0.16	3.7	25.5	325	153	645	8,700	2.5	3.94

Standard Capacity Ratings - <b>Ground Water Heating</b>											60Hz
EAT 68°F (20°C)											ELT 50°F (10°C)
Model Size	Nominal Size	Liquid Flow		Pressure Drop		Airflow		Input Energy	Capacity		COP <sub>H</sub>
	tons	gpm	L/s	psi	kPa	cfm	L/s	Watts	Btu/hr	kW	W/W
09	0.75	2.5	0.16	3.4	23.4	325	153	695	10,000	2.9	4.20

Standard Capacity Ratings - <b>Ground Loop Cooling*</b>												60Hz
EAT 80.6°F (27°C) , RH=46% * 15% Methanol by Weight Ground Loop Fluid												ELT 77°F (25°C)
Model Size	Size	Liquid Flow		Pressure Drop		Airflow		Input Energy	Capacity		EER	COP <sub>c</sub>
	tons	gpm	L/s	psi	kPa	cfm	L/s	Watts	Btu/hr	kW	Btu/hr/W	W/W
09	0.75	2.5	0.16	3.5	24.1	325	153	600	10,400	3.0	17.3	5.08

Standard Capacity Ratings - <b>Ground Water Cooling</b>												60Hz
EAT 80.6°F (27°C) , RH=46%												ELT 59°F (15°C)
Model	Size	Liquid Flow		Pressure Drop		Airflow		Input Energy	Capacity		EER	COP <sub>c</sub>
	tons	gpm	L/s	psi	kPa	cfm	L/s	Watts	Btu/hr	kW	Btu/hr/W	W/W
09	0.75	2.5	0.16	3.3	22.7	325	153	520	11,900	3.5	22.8	6.69



# Performance Tables

**RH-09-HAC-P-1L** R410a, 60 Hz, GKS086

HEATING	OUTDOOR LOOP (15% Methanol)						ELECTRICAL			INDOOR LOOP (Air)						
	ELT (°F)	Evap. Temp.	Flow (gpm)	LLT (°F)	Delta T (°F)	Heat Abs. (Btu/hr)	Compressor Current (A)	Fan** (W)	Input Power (W)	EAT (°F)	Cond. Temp.	Airflow (cfm)	LAT (°F)	Delta T (°F)	Heating (Btu/hr)	COP <sub>H</sub>
	29	20	2.5	24	5.3	6,334	2.8	82	633	68	102	325	94	26.1	8,494	3.93
	35	25	2.5	29	5.6	6,604	2.8	82	654		104	325	95	27.2	8,836	3.96
	41	30	2.5	35	5.8	6,865	2.8	82	675		106	325	96	28.2	9,169	3.98
	47	35	2.5	41	6.1	7,228	2.8	82	688		108	325	98	29.5	9,577	4.08
	50	39	2.5	44	6.1	7,608	2.8	82	696		110	325	99	30.7	9,982	4.20
	57	45	2.5	50	6.8	8,445	2.9	82	706		112	325	101	33.4	10,854	4.51
	63	50	2.5	56	7.4	9,208	2.9	82	715		114	325	104	35.8	11,649	4.77
	69	55	2.5	61	8.0	9,997	3.0	82	726		116	325	106	38.4	12,474	5.04

OUTDOOR LOOP (15% Methanol)							ELECTRICAL			INDOOR LOOP (Air @ 46% RH)								
COOLING	ELT (°F)	Cond. Temp.	Flow (gpm)	LLT (°F)	Delta T (°F)	Heat Rej. (Btu/hr)	Compressor Current (A)	Fan** (W)	Input Power (W)	EAT (°F)	Evap. Temp.	Airflow (cfm)	LAT (°F)	Delta T (°F)	Latent (Btu/hr)	Sensible (Btu/hr)	Cooling (Btu/hr)	EER
	51	70	2.5	63	11.7	14,665	1.7	93	494	80.6	44	325	53	27.2	4,154	8,826	12,980	26.3
	56	75	2.5	67	11.3	14,121	1.9	93	510		44	325	55	25.9	3,962	8,420	12,382	24.3
	61	80	2.5	72	10.7	13,394	2.0	93	529		44	325	56	24.2	3,709	7,881	11,590	21.9
	66	85	2.5	76	10.4	13,050	2.1	93	548		45	325	57	23.4	3,577	7,601	11,178	20.4
	72	90	2.5	83	10.8	12,787	2.2	93	571		45	325	58	22.7	3,469	7,371	10,840	19.0
	77	95	2.5	88	10.5	12,417	2.4	93	598		45	325	59	21.7	3,320	7,055	10,375	17.3
	82	100	2.5	92	10.2	12,119	2.5	93	628		45	325	60	20.9	3,192	6,783	9,975	15.9
	87	105	2.5	97	10.0	11,877	2.6	93	660		45	325	61	20.1	3,080	6,544	9,624	14.6

METRIC

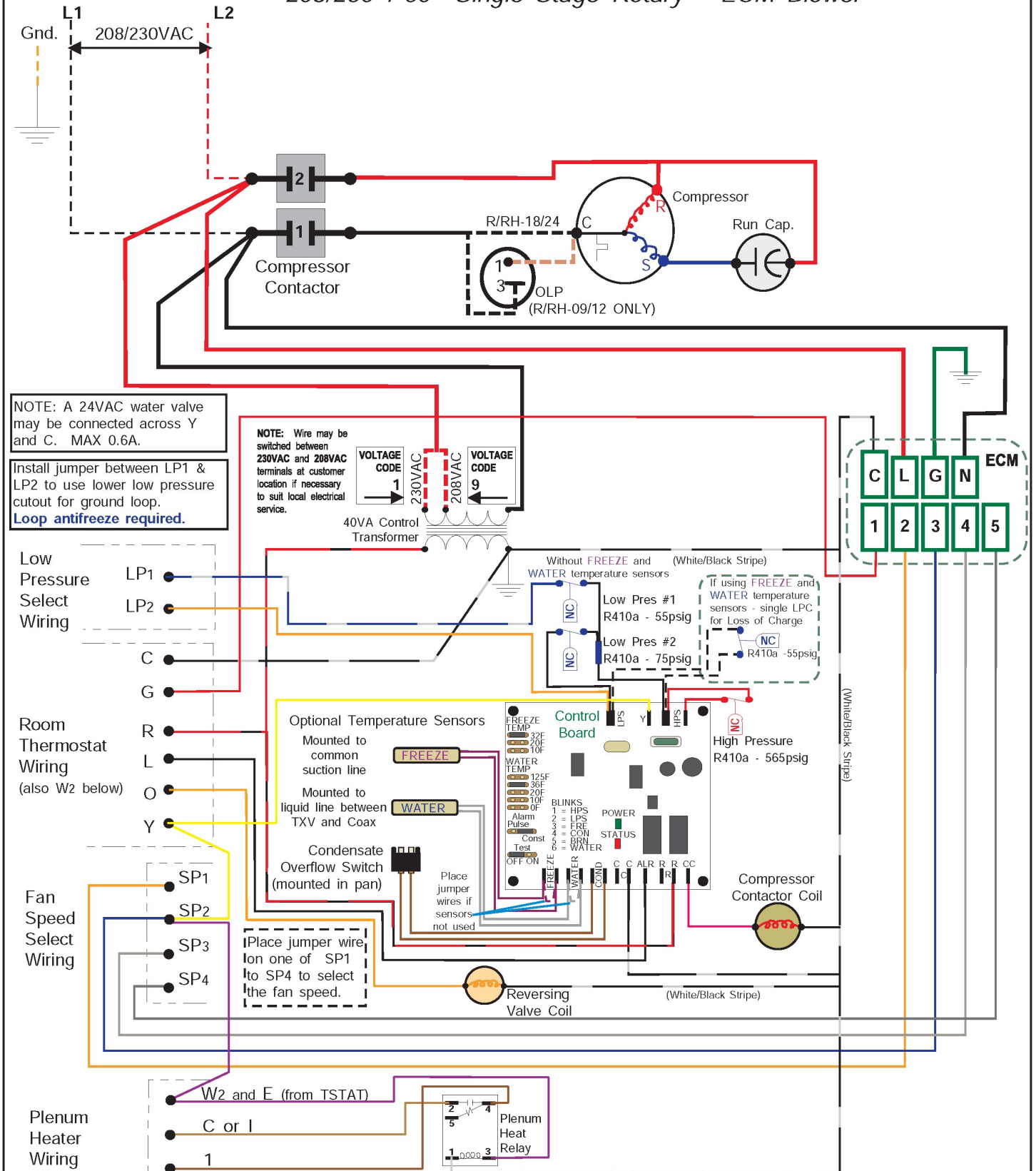
HEATING	OUTDOOR LOOP (15% Methanol)						ELECTRICAL			INDOOR LOOP (Air)						
	ELT (°C)	Evap. Temp.	Flow (L/s)	LLT (°C)	Delta T (°C)	Heat Abs. (W)	Compressor Current (A)	Fan** (W)	Input Power (W)	EAT (°C)	Cond. Temp.	Airflow (L/s)	LAT (°C)	Delta T (°C)	Heating (Btu/hr)	COP <sub>H</sub>
	-1.7	-6.7	0.16	-4.6	3.0	1,856	2.8	82	633	20	38.9	153	34.5	14.5	2,489	3.93
	1.7	-3.9	0.16	-1.4	3.1	1,935	2.8	82	654		40.0	153	35.1	15.1	2,589	3.96
	5.0	-1.1	0.16	1.8	3.2	2,012	2.8	82	675		41.1	153	35.7	15.7	2,687	3.98
	8.3	1.7	0.16	5.0	3.4	2,118	2.8	82	688		42.2	153	36.4	16.4	2,806	4.08
	10.0	3.9	0.16	6.6	3.4	2,229	2.8	82	696		43.3	153	37.1	17.1	2,925	4.20
	13.9	7.2	0.16	10.1	3.8	2,474	2.9	82	706		44.4	153	38.6	18.6	3,180	4.51
	17.2	10.0	0.16	13.1	4.1	2,698	2.9	82	715		45.6	153	39.9	19.9	3,413	4.77
	20.6	12.8	0.16	16.1	4.4	2,929	3.0	82	726		46.7	153	41.3	21.3	3,655	5.04

	OUTDOOR LOOP (15% Methanol)						ELECTRICAL			INDOOR LOOP (Air @ 46% RH)								
COOLING	ELT (°C)	Cond. Temp.	Flow (L/s)	LLT (°C)	Delta T (°C)	Heat Rej. (W)	Compressor Current (A)	Fan** (W)	Input Power (W)	EAT (°C)	Evap. Temp.	Airflow (L/s)	LAT (°C)	Delta T (°C)	Latent (W)	Sensible (W)	Cooling (Btu/hr)	COP <sub>c</sub>
	10.6	21.1	0.16	17.1	6.5	4,297	1.7	93	494	27	6.7	153	11.9	15.1	1,217	2,586	3,803	7.70
	13.3	23.9	0.16	19.6	6.3	4,137	1.9	93	510		6.8	153	12.6	14.4	1,161	2,467	3,628	7.12
	16.1	26.7	0.16	22.1	6.0	3,924	2.0	93	529		6.9	153	13.5	13.5	1,087	2,309	3,396	6.42
	18.9	29.4	0.16	24.7	5.8	3,824	2.1	93	548		7.0	153	14.0	13.0	1,048	2,227	3,275	5.97
	22.2	32.2	0.16	28.2	6.0	3,747	2.2	93	571		7.1	153	14.4	12.6	1,016	2,160	3,176	5.57
	25.0	35.0	0.16	30.8	5.8	3,638	2.4	93	598		7.2	153	14.9	12.1	973	2,067	3,040	5.08
	27.8	37.8	0.16	33.4	5.7	3,551	2.5	93	628		7.3	153	15.4	11.6	935	1,987	2,923	4.65
	30.6	40.6	0.16	36.1	5.6	3,480	2.6	93	660		7.4	153	15.8	11.2	902	1,917	2,820	4.27

\*\* Fan power at 24.9Pa (0.10inH<sub>2</sub>O) external static.

# R/RH-09/12/18/24 Schematic Diagram

## 208/230-1-60 Single Stage Rotary ECM Blower

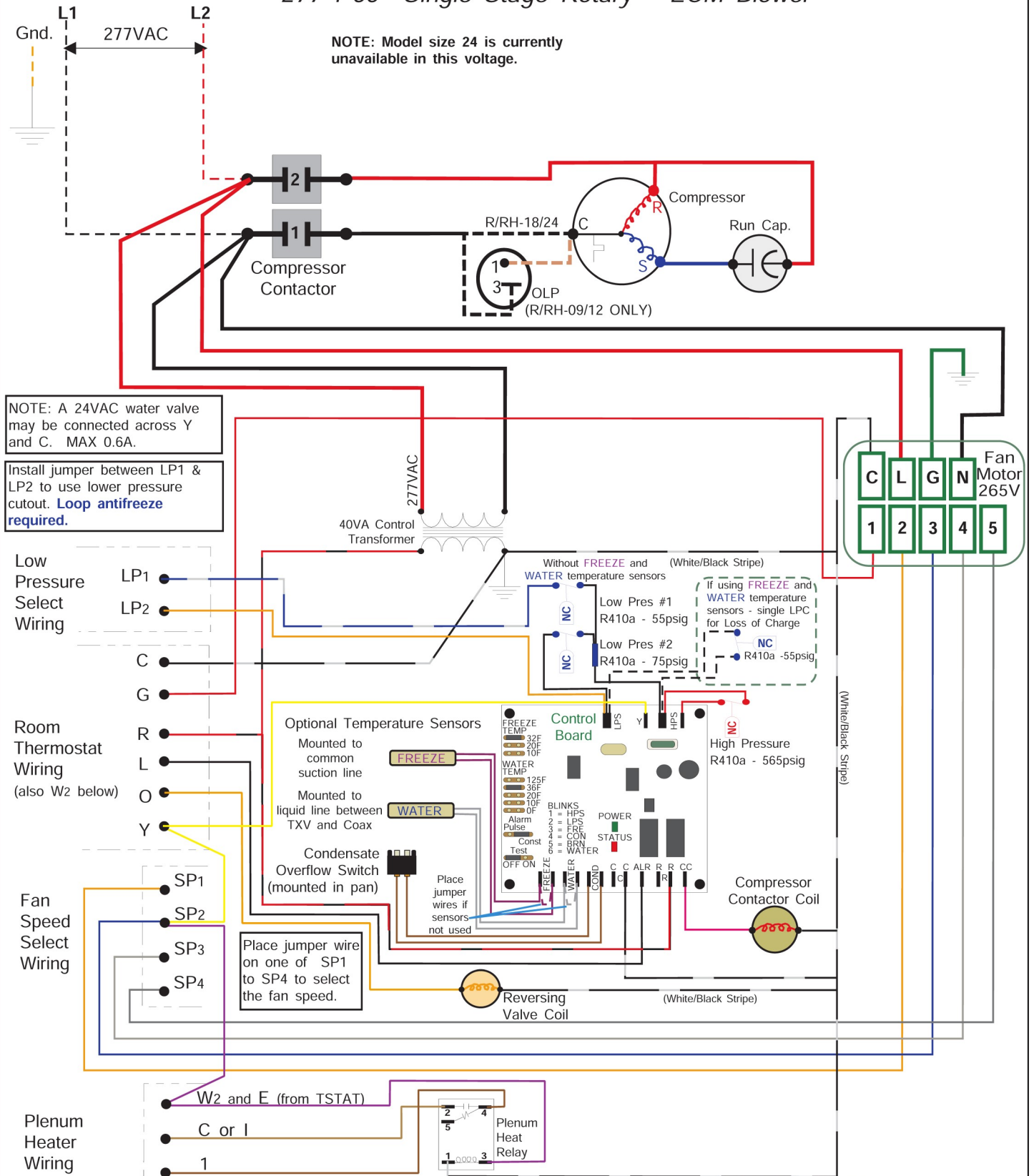


					Drawn By Chris Geddes	Date 15 MAY 2015	MARITIME GEOTHERMAL LTD. 170 Plantation Rd. Petitcodiac, NB E4Z 6H4			
					Checked By Chris Geddes	Date 15 MAY 2015				
02	ISSUE 02	D. RHEAULT	D. RHEAULT	1 MAR 2023	Approved By (ENG)	Date	Drawing Name R/RH-09/12/18/24-HAC-P-1L/9L-C-SDE*F Schematic Diagram			
02	000246	D. RHEAULT	D. RHEAULT	22 APR 2021	Approved By (MFG)	Date				
01	Initial Release	C. GEDDES	C. GEDDES	15 MAY 2015	Approved By	Date	Size A	Drawing Number 001954SCH	Drawing Rev 02(i2)	SHEET 1 of 1
REV	ECO #	IMPL BY	APVD BY	DATE						

# R/RH-09/12/18/24 Schematic Diagram

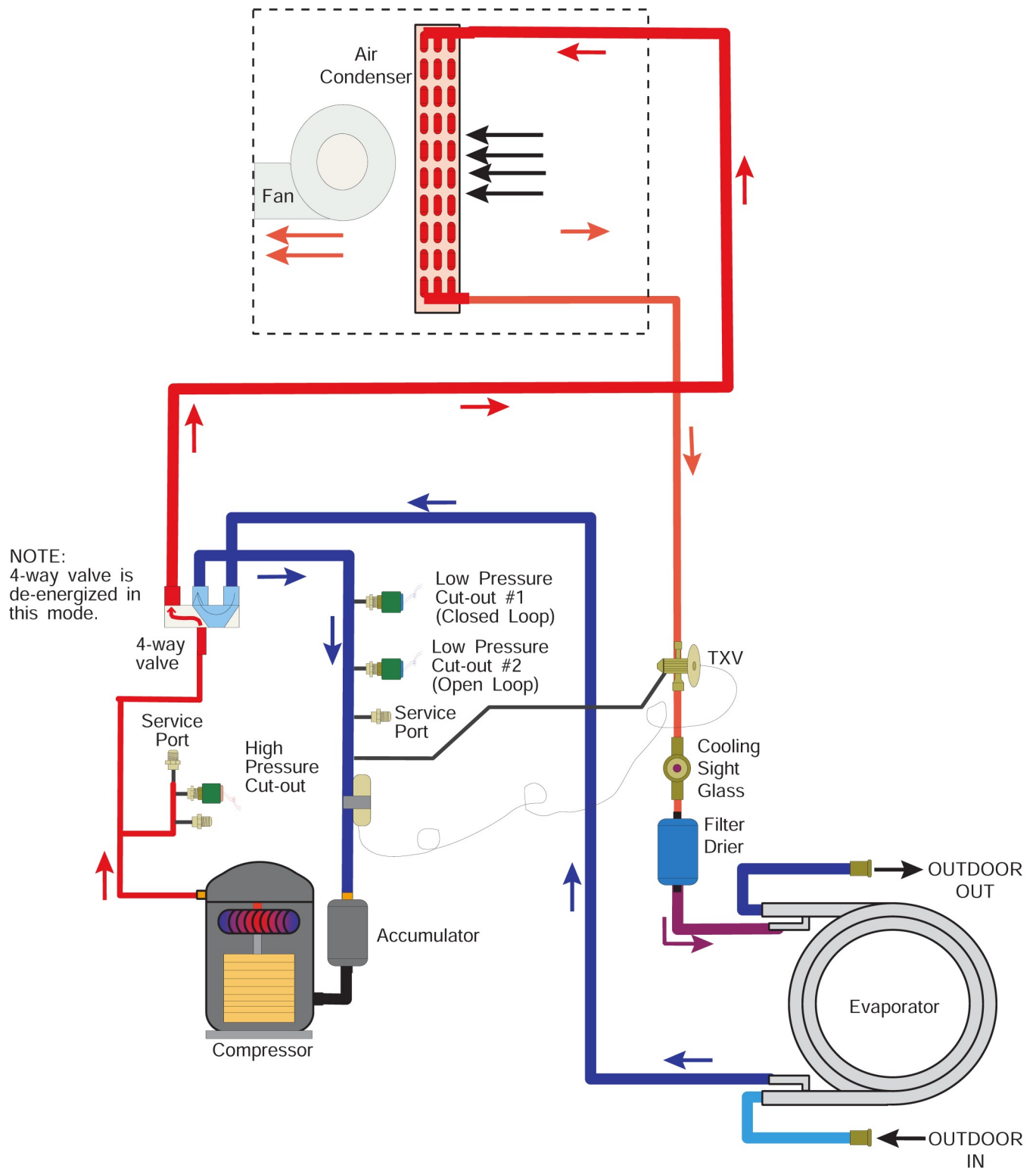
## 277-1-60 Single Stage Rotary ECM Blower

NOTE: Model size 24 is currently unavailable in this voltage.



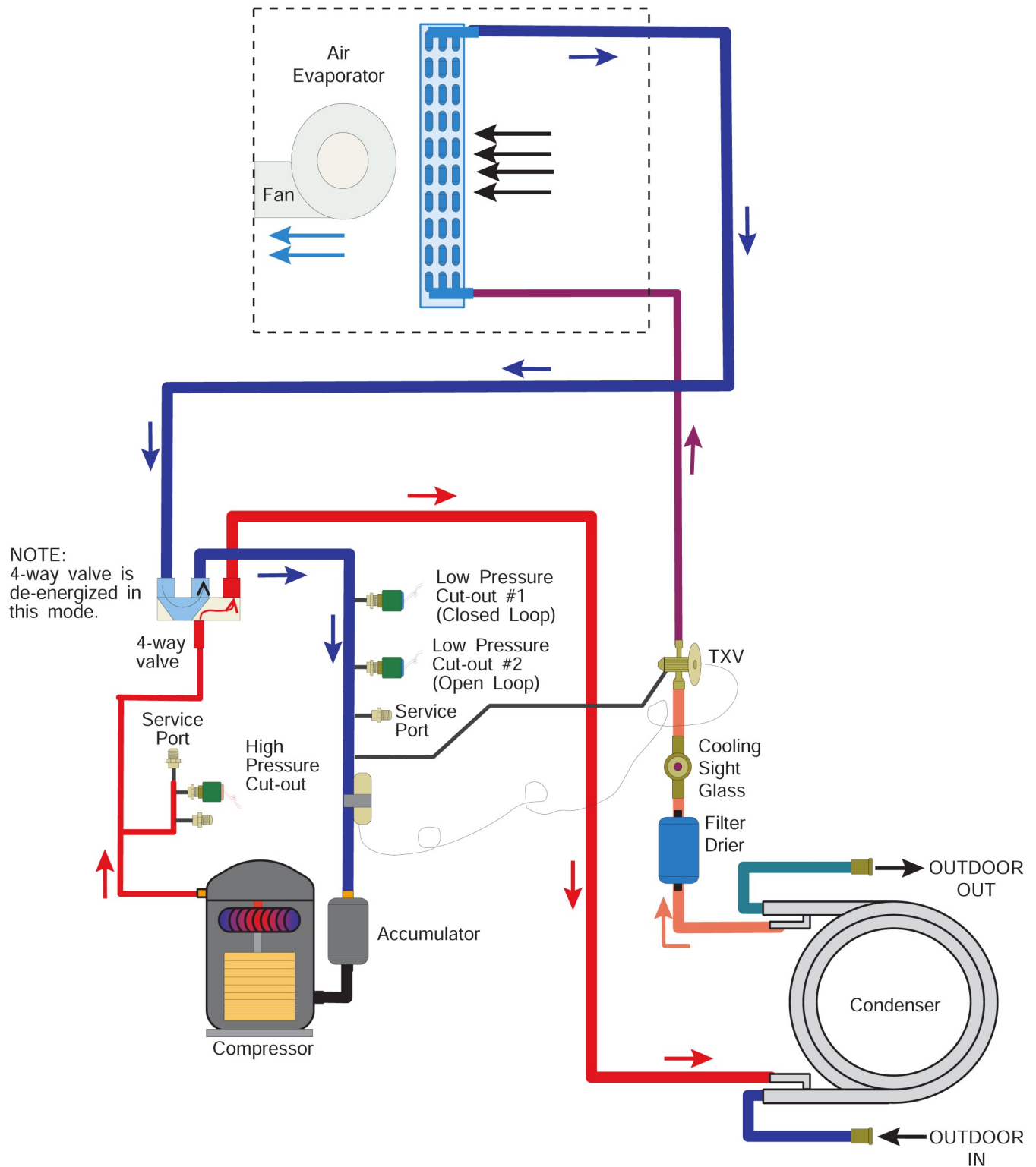
					Drawn By Chris Geddes	Date 15 JUN 2016	<div>MARITIME GEOTHERMAL LTD.</div> <div>170 Plantation Rd. Pettitcodiac, NB E4Z 6H4</div>			
					Checked By Chris Geddes	Date 15 JUN 2016				
02	000246	D. RHEAULT	D. RHEAULT	22 APR 2021	Approved By (ENG)	Date	Drawing Name R/RH-09/12/18/24-HAC-P-3L-C-SDE*F Schematic Diagram			
01	Initial Release	C. GEDDES	C. GEDDES	15 JUN 2016	Approved By (MFG)	Date				
REV	ECO #	IMPL BY	APVD BY	DATE	Approved By	Date				
							Size A	Drawing Number 002124SCH	Drawing Rev 02	SHEET 1 of 1

# R(H) 09-24 Refrigeration Circuit - Heating Mode



					Drawn By Chris Geddes	Date 21 MAY 2103	<b>MARITIME GEOTHERMAL LTD.</b> 170 Plantation Rd. Petitcodiac, NB E4Z 6H4
					Checked By Chris Geddes	Date 21 MAY 2103	
					Approved By Chris Geddes (ENG)	Date 21 MAY 2103	
					Approved By Chris Geddes (MFG)	Date	
01	Initial Release	C. GEDDES	C. GEDDES	21 MAY 2013	Approved By	Date	Drawing Name <b>R(H) 09-24</b> <b>Refrigeration Circuit Diagram - Heating Mode</b>
REV	ECO #	IMPL BY	APVD BY	DATE	Approved By	Date	Size <b>A</b> Drawing Number <b>001766RCD</b> Drawing Rev <b>01</b> SHEET <b>1 of 1</b>

# R(H) 09-24 Refrigeration Circuit - Cooling Mode



					Drawn By Chris Geddes	Date 21 MAY 2103	MARITIME GEOTHERMAL LTD.		170 Plantation Rd. Petitcodiac, NB E4Z 6H4	
					Checked By Chris Geddes	Date 21 MAY 2103				
					Approved By Chris Geddes	(ENG) Date 21 MAY 2103	Drawing Name R(H) 09-24 Refrigeration Circuit Diagram - Cooling Mode			
					Approved By	(MFG) Date				
01	Initial Release	C. GEDDES	C. GEDDES	21 MAY 2013	Approved By	Date	Size A	Drawing Number 001767RCD	Drawing Rev 01	SHEET 1 of 1
REV	ECO #	IMPL BY	APVD BY	DATE						



# Engineering Guide Specifications

---

## General

The liquid source reversing water-to-air heat pump shall be a single packaged reverse-cycle heating/cooling unit. The unit shall be listed by a nationally recognized safety-testing laboratory (NRTL), such as TUV, ETL, UL, or CSA. The unit shall be rated in accordance with applicable standards of the Air Conditioning, Heating, and Refrigeration Institute / International Standards Organization (AHRI/ISO) and/or Canadian Standards Association (CSA). The liquid source water to water heat pump unit, as manufactured by Maritime Geothermal, Petitcodiac, New Brunswick, shall be designed to operate correctly within liquid temperature ranges specified on the "Minimum and Maximum Operating Temperatures" page of this engineering specification document.

## Factory Quality

Each unit shall be run tested at the factory with water circulating through the outdoor loop and air circulating through the indoor loop. Quality control system checks shall include: computerized nitrogen pressurized leak test, evacuation of refrigeration circuit to sustained vacuum, accurate system charge, detailed heating and cooling mode tests, and quality cross check all operational and test conditions to pass/fail criteria. Units tested without water and air flow are not acceptable. The units shall be warranted by the manufacturer against defects in materials and workmanship in accordance with the warranty section at the end of this document. Optional extended factory warranty coverage may be available.

## Cabinet

Each unit shall be enclosed in a sheet metal cabinet. Cabinet shall be constructed of partially powder coated galvanized sheet metal of minimum 20 gauge. Sheet metal gauge shall be higher where structurally required. Design and construction of cabinet shall be such that it is rigid and passes the CSA/UL Loading Test requirements (200 lb roof test and 25 lb guard test). All panels shall be lined with minimum 1/2 inch [12.7 mm] thick acoustic type glass fiber insulation. All insulation shall meet the fire retardant provisions of NFPA 90A. This material shall also provide acoustical benefit. The unit must have a minimum of three access panels for serviceability. Units having only one access panel to compressor/heat exchangers/expansion device/refrigerant piping shall not be acceptable. The electrical box shall have separate holes and knockouts for entrance of line voltage and low voltage control wiring. All factory-installed wiring passing through factory knockouts and openings shall be protected from sheet metal edges at openings by plastic grommets.

## Refrigerant Circuit

All units shall contain only one sealed refrigerant circuit, containing a hermetic motor rotary compressor with built in suction accumulator, coaxial heat exchanger, refrigerant to air exchanger, thermostatic expansion valve (TXV), reversing valve, factory installed high and low pressure safety switches, service ports, liquid line filter-dryer, and sight glass.

Compressors shall be specified for heat pump duty with internal isolation consisting of two sets of rubber vibration isolators between the compressor and mounting plate, and between the mounting plate and cabinet floor. Compressor motors shall have internal overload protection.

The water to refrigerant heat exchangers shall consist of a steel outer jacket with twisted copper inner tube, designed and certified for 600 psig [4136 kPa] working pressure on the refrigerant side and 450 psig [3108 kPa] on the water side. Heat exchangers headered together in parallel shall use a reverse-return or symmetrical arrangement on the water side and symmetrical arrangement on the refrigerant side to ensure even flow splitting. Heat exchangers shall be insulated over all of their outside surface with minimum 3/8" thick closed cell insulation. Insulation consisting of 1/8" closed-cell insulating tape shall not be acceptable. Cupro-nickel (CuNi) inner tube shall be available as a factory option.

The refrigerant to air heat exchanger shall be a multi-circuit design with copper tubing and aluminum fins with refrigerant distributor for cooling mode. It shall be designed and certified for 650 psig [4482 kPa] working pressure on the refrigerant side.

The thermostatic expansion valve shall be a balanced port bi-flow type with internal bleed and shall provide proper superheat control over the unit's operating range with minimal deviation from the superheat setpoint.

## **Fan/Blower**

The blower shall be a squirrel cage type, constructed of corrosion resistant material, with unobstructed removable venturi to allow one-side servicing of fan motor. The fan return may be specified as left or right at the time of manufacture. The air outlet may be end or side discharge and shall be field configurable.

The fan motor shall be direct drive electrically commutated motor (ECM) with soft start and 5 selectable discrete torque levels.

## **Auxiliary Heat (Plenum Heater)**

An optional plenum heater may be field installed outside the unit. Electrical control connections shall be supplied.

## **Condensate Tray**

The condensate tray shall be large enough to catch any condensation that may drip from the refrigerant to air exchanger during cooling operation. The condensate drain shall be 3/4" NPT female socket fitting for external drain connection.

## **Piping and Connections**

The unit shall have one set of primary water in and water out connections (outdoor loop). The primary connection type shall be 1/2" nominal female National Pipe Thread (NPT). All water connectors shall be rigidly mounted to cabinet with corrosion resistant fasteners to prevent relative movement. All water connectors shall be constructed of copper or brass material for corrosion resistance.

All internal water and refrigerant piping shall be insulated with minimum 3/8" thick closed cell insulation. Insulation consisting of 1/8" closed-cell insulating tape shall not be acceptable.

## **Electrical**

Controls and safety devices shall be factory wired and mounted within the unit. Controls shall include a 24 volt alternating current (24VAC) class II control transformer with short circuit protection for providing power to all internal controls as well as a remote thermostat. Terminal strips with screw terminals shall be provided for field control wiring and power supply line connections. Units shall be name-plated for use with time delay fuses or circuit breakers.

## **Unit Control**

The control system shall have the following features:

1. Anti-short cycle time delay on compressor operation. Time delay shall be a minimum of 5 minutes, for both thermostat demand and safety control reset starts. A test jumper shall be provided to disable this delay for unit commissioning and testing purposes. The unit shall revert to normal operation after a time delay if the test jumper is accidentally left in place.
2. Random compressor start delay of 0-120 seconds (in addition to 5 minute anti-short cycle timer) on unit power up to facilitate starting multiple units on one disconnect switch or after a power failure.
3. Compressor shutdown for high or low refrigerant pressures.
4. Condensate overflow protection, using two contacts in the drip tray (not a mechanical or electronic switch).
5. Low grid voltage or 'brownout' protection, which will prevent compressor operation if low voltage is detected.
6. Automatic intelligent reset: unit shall automatically restart 5 minutes after a trip if the fault has cleared. Should a fault reoccur again within 60 minutes then a permanent lockout shall occur, requiring cycling of the power to the unit in order to reset.

Maritime Geothermal works continually to improve its products. As a result, the design and specifications of any product may be changed without notice. Please contact Maritime Geothermal at 1-506-756-8135 or visit [www.nordicghp.com](http://www.nordicghp.com) for latest design and specifications. Purchaser's approval of this data set signifies that the equipment is acceptable under the provisions of the job specification. Statements and other information contained herein are not express warranties and do not form the basis of any commercial contract or other agreement between any parties, but are merely Maritime Geothermal's statement of opinion regarding its products.

# LIMITED WARRANTY

MARITIME GEOTHERMAL LTD. warrants that its commercial geothermal heat pumps shall be free from defects in materials and workmanship for a period of ONE (1) YEAR after the date of installation or for a period of ONE (1) YEAR AND SIXTY (60) DAYS after the date of shipment, whichever occurs first. This warranty covers all internal components of the heat pump.

MARITIME GEOTHERMAL LTD. shall, at its option, repair or replace any part covered by this warranty. Defective parts shall be returned to MARITIME GEOTHERMAL LTD., transportation charges prepaid. Replacement or repaired parts and components are warranted only for the remaining portion of the original warranty period.

**This warranty is subject to the following conditions:**

1. The geothermal heat pump must be properly installed and maintained in accordance with MARITIME GEOTHERMAL LTD. guidelines.
2. The installer must complete the **Startup Record** and return it to MARITIME GEOTHERMAL LTD. within 21 days of unit installation.
3. For new construction, it is the responsibility of the building or general contractor to supply temporary heat to the structure prior to occupancy. Geothermal heat pumps are designed to provide heat only to the completely finished and insulated structure. Startup of the unit shall not be scheduled prior to completion of construction and final duct installation for validation of this warranty.
4. It is the customer's responsibility to supply the proper quantity and quality of water or properly sized ground loop with adequate freeze protection.

If a geothermal heat pump manufactured by MARITIME GEOTHERMAL LTD. fails to conform to this warranty, MARITIME GEOTHERMAL LTD.'s sole and exclusive liability shall be, at its option, to repair or replace any part or component which is returned by the customer during the applicable warranty period set forth above, provided that (1) MARITIME GEOTHERMAL LTD. is promptly notified in writing upon discovery by the customer that such part or component fails to conform to this warranty; (2) the customer returns such part or component to MARITIME GEOTHERMAL LTD., transportation charges prepaid, within (30) thirty days of failure, and (3) MARITIME GEOTHERMAL LTD.'s examination of such component discloses to its satisfaction that such part or component fails to conform to this warranty and the alleged defects were not caused by accident, misuse, neglect, alteration, improper installation, repair or improper testing. MARITIME GEOTHERMAL LTD. will not be responsible for any consequential damages or labour costs incurred. In addition, MARITIME GEOTHERMAL LTD. will not be responsible for the cost of replacement parts purchased from a third party.