



Engineering Specification

R-80-HACW-P-*S*—SDE*F Liquid to Air Geothermal Heat Pump 60 Hz

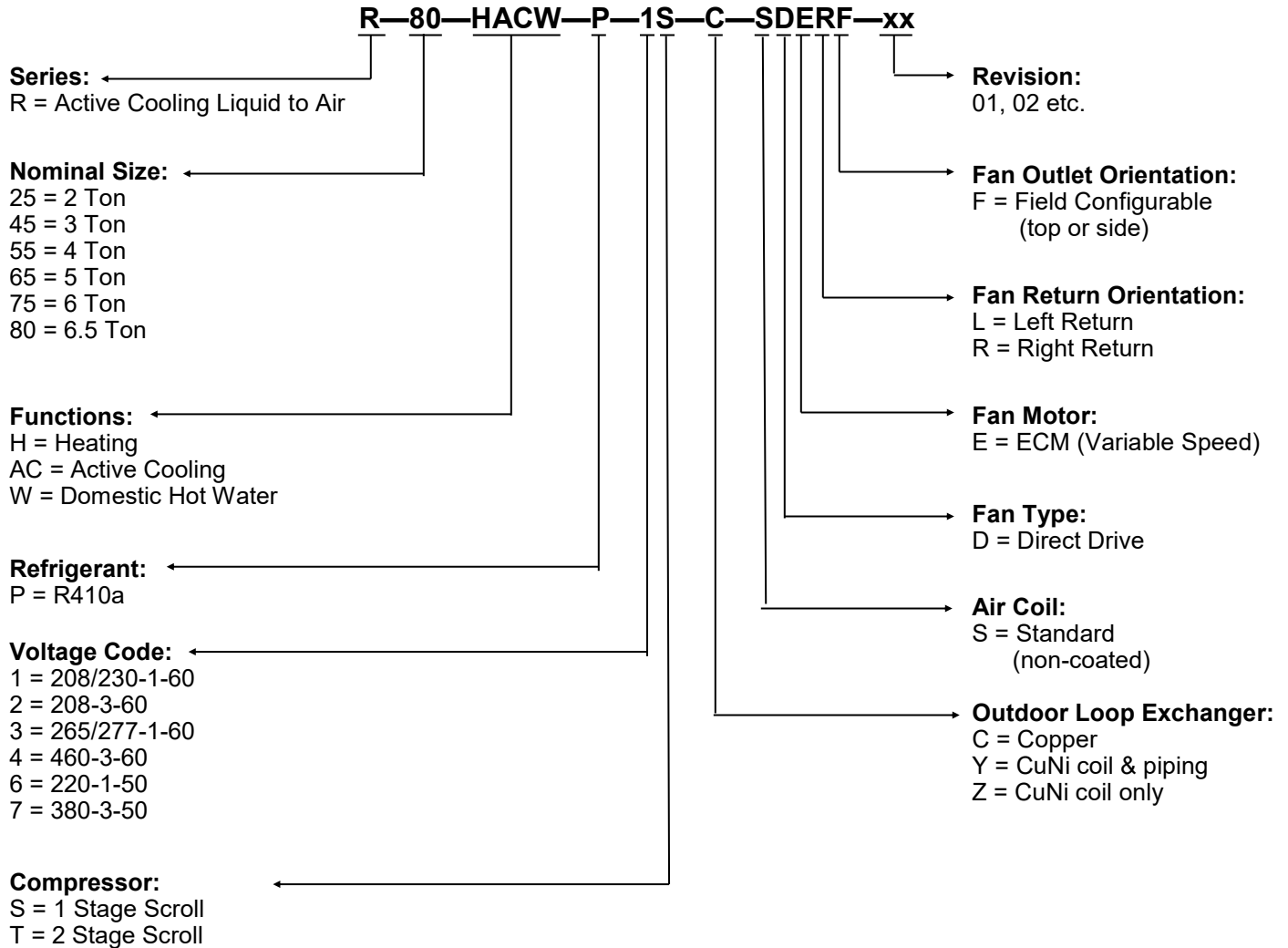


Maritime Geothermal Ltd.
P.O. Box 2555, 170 Plantation Road
Petitcodiac, NB E4Z 6H4
(506) 756-8135



info@nordicghp.com
www.nordicghp.com
001691SPC-04

Model Nomenclature



APPLICATION TABLE											
SIZE	FUNCTION	REFRIGERANT	VOLTAGE	COMPRESSOR	OUTDOOR COIL	FAN/CASE	REVISIONS				
R-80	HACW	P	1	S	C Y Z	SDELF SDERF	11				
			2	S			11				
			4	S			11				
This manual applies only to the models and revisions listed in this table.											

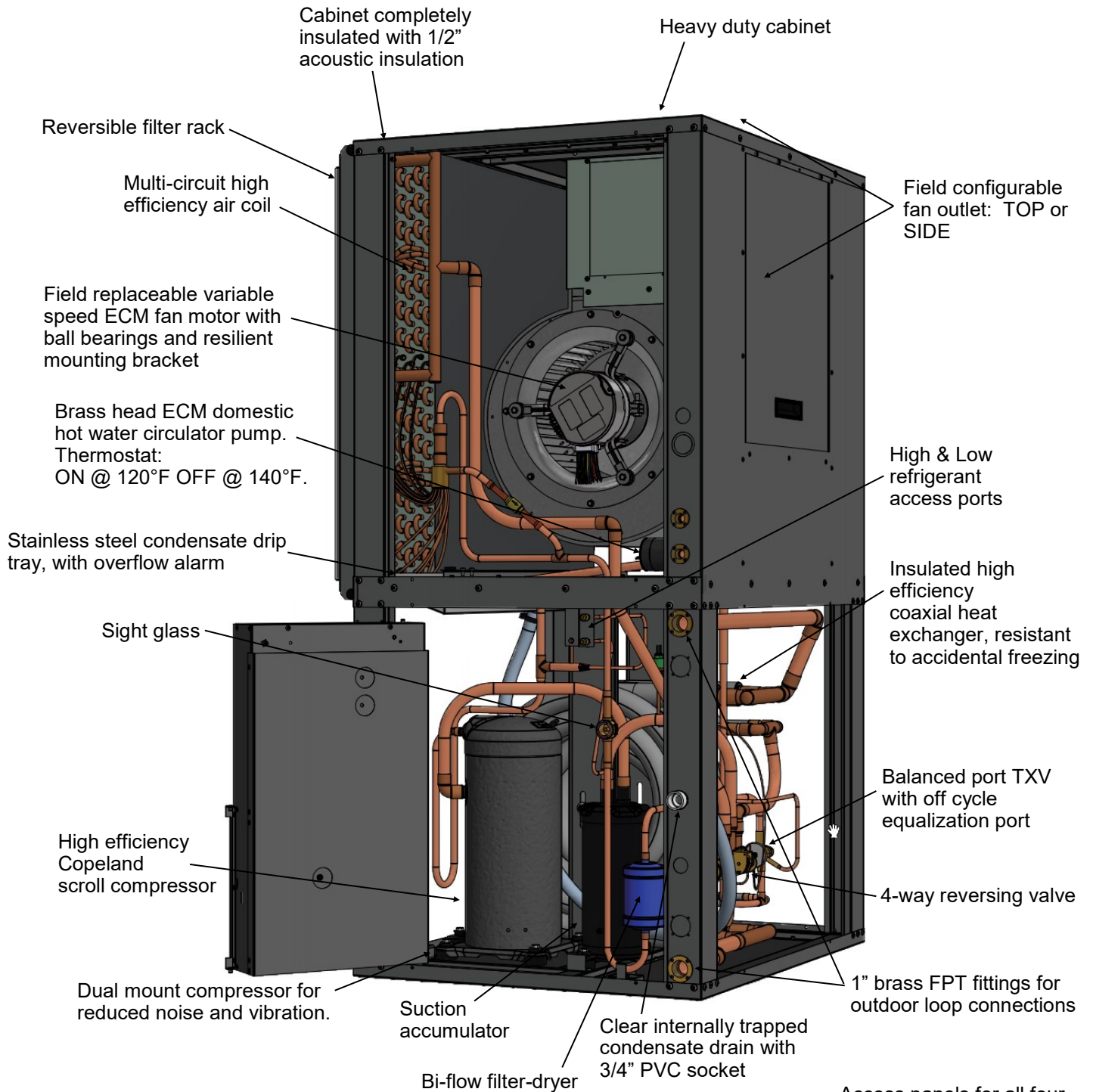
Design Features

- Energy Star rated
- AHRI certified for performance
- TUV certified for safety (CSA 22.2 No 236-05)
- Satin galvanized steel cabinet
- Powder coat finish
- Acoustically insulated cabinet (1/2")
- All connections located on same side
- Access panels for all four sides, serviceable from two sides
- ECM fan motor with single side service access
- Field configurable fan outlet position: top or side
- Optional plenum heater can be internally mounted with top fan outlet configuration
- Reversible air filter rack
- Stainless steel condensate drip tray
- Clear condensate drain with 3/4" PVC socket connection, internally trapped
- Multi-circuit high efficiency air coil
- Refrigeration service ports located inside unit (1/4" Schrader)
- Insulated coaxial heat exchanger and piping, available in copper or cupro-nickel (CuNi)
- 1" brass FPT fittings for loop connections
- Provisions for powering pump module for ground loop applications
- Scroll compressor with start capacitor kit on single phase models
- Dual-grommet-mounted compressor for reduced noise and vibration
- Suction line accumulator
- Liquid line filter-dryer
- Liquid line sight glass
- Balanced port thermostatic expansion valve (TXV) with internal bleed
- 4-way reversing valve
- High and low pressure safety controls
- Control board with random start, anti-short cycle timer, auto-retry and permanent lockout mode
- Brownout and condensate overflow protection standard
- Electrical box layout and schematic diagrams
- Double wall Domestic Hot Water (DHW) desuperheater suitable for heating potable water
- Brass head ECM circulator for domestic hot water circuit uses less than half the power of traditional circulating pumps and allows motor replacement without tools
- 1/2" brass FPT fittings for Domestic Hot Water connections

Available Accessories

- 3-stage heat / 2-stage cool programmable thermostat, Wifi and standard versions
- Circulator pump module with loop / unit isolation valves (230VAC) for ground loop applications
- Barbed P/T port adapters for heat pump
- Anti-vibration pad for under unit
- Compressor sound jacket
- Secure Start module
- Passive electrostatic cleanable permanent air filter
- 1" water valve (slow closing or solenoid) & wiring harness for open loop applications
- Electric plenum heaters 5 / 7 / 10 / 15 / 20 kW, internally mountable for top fan outlet configuration

Design Features



Provisions for powering pump module for ground loop applications

Optional water valve for ground water installations

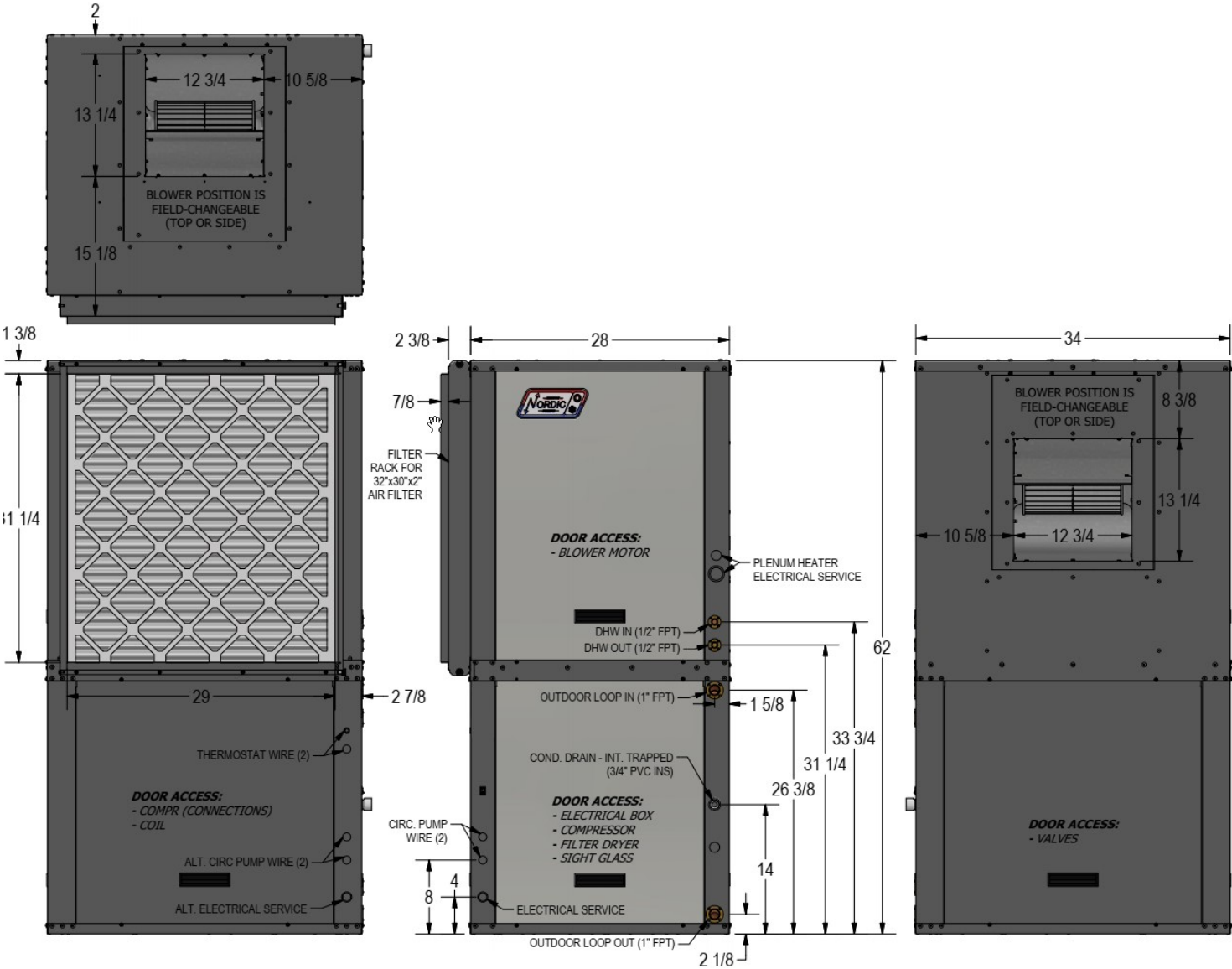


Access panels for all four sides, serviceable from two sides

Fault monitoring board with random start, lock-out indicator, anti-short cycle timer, & brownout protection

Start capacitor kit standard

Dimensions (Left Return)

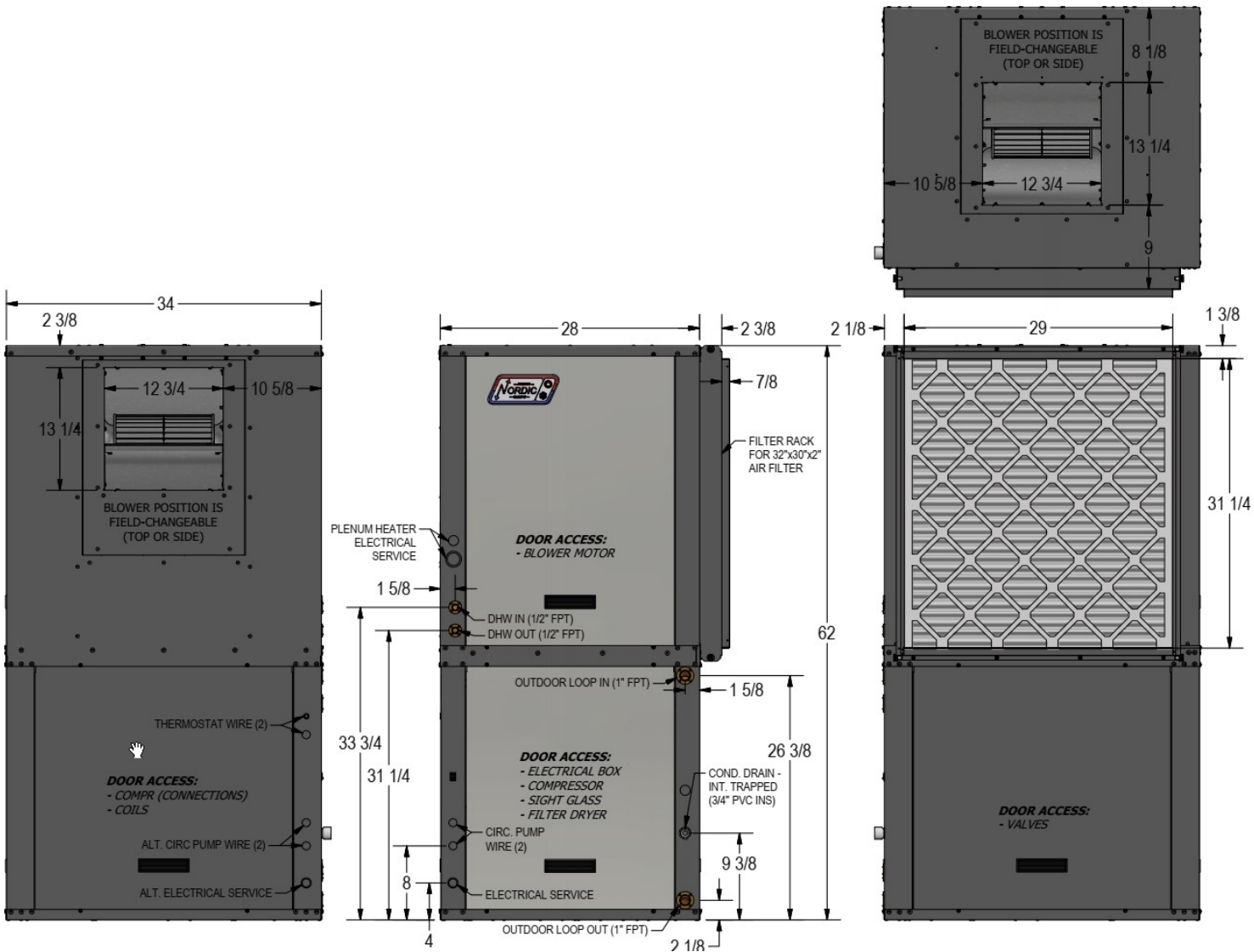


RECOMMENDED
FRONT CLEARANCE:
2 FT

RECOMMENDED
RIGHT SIDE
CLEARANCE:
2 FT

NO BACK CLEARANCE REQUIRED

Dimensions (Right Return)



RECOMMENDED
LEFT SIDE
CLEARANCE:
2 FT

RECOMMENDED
FRONT CLEARANCE:
2 FT

NO BACK CLEARANCE REQUIRED

Specifications

Electrical Specifications											
Code	Power Supply			Compressor		Fan	Outd. Circ.	FLA	MCA	Maximum Fuse/Breaker	Minimum Wire Size
	V-ø-Hz	MIN	MAX	RLA	LRA	RLA	Max A	Amps	Amps	Amps	ga
1	208/230-1-60	187	253	36.9	185	7.0	5.0	49.7	58.9	80	#4-2*
2	208-3-60	187	229	23.2	164	7.0	5.0	36.0	41.8	60	#6-3*
3	-	-	-	-	-	-	-	-	-	-	-
4	460-3-60	414	506	11.2	75	7.0	-	19.0	21.8	30	#10-4

* additional conductor required if connecting 115VAC circulators to the unit

Refrigerant Charge				
MODEL	lb	kg	Refrigerant	Oil Type
R-80	11.5	5.2	R410a	POE

- Oil capacity is marked on the compressor label.
- Refrigerant charge is subject to revision; actual charge is indicated on the unit nameplate.

Shipping Information				
MODEL	WEIGHT lb. (kg)	DIMENSIONS in (cm)		
		L	W	H
R-80	598 (271)	44 (112)	36 (91)	68 (173)

Operating Temperature Limits					
Loop	Mode	Parameter	°F	°C	Note
OUTDOOR (ground loop)	Heating (water/open loop)	Minimum ELT	41	5	
	Heating (antifreeze/ground loop)	Minimum ELT	23	-5	Adequate antifreeze concentration required.
	Heating	Maximum ELT	80	27	Reduce flow above this temperature.
	Cooling	Minimum ELT	41	5	Flow reduction may be required.
	Cooling	Maximum ELT	110	43	
INDOOR (air duct)	Heating	Minimum EAT	60	16	Reduce air flow if necessary during heating startup.
	Heating	Maximum EAT	100	38	
	Cooling	Minimum EAT	50	10	
	Cooling	Maximum EAT	100	38	Reduce air flow if necessary during cooling startup.

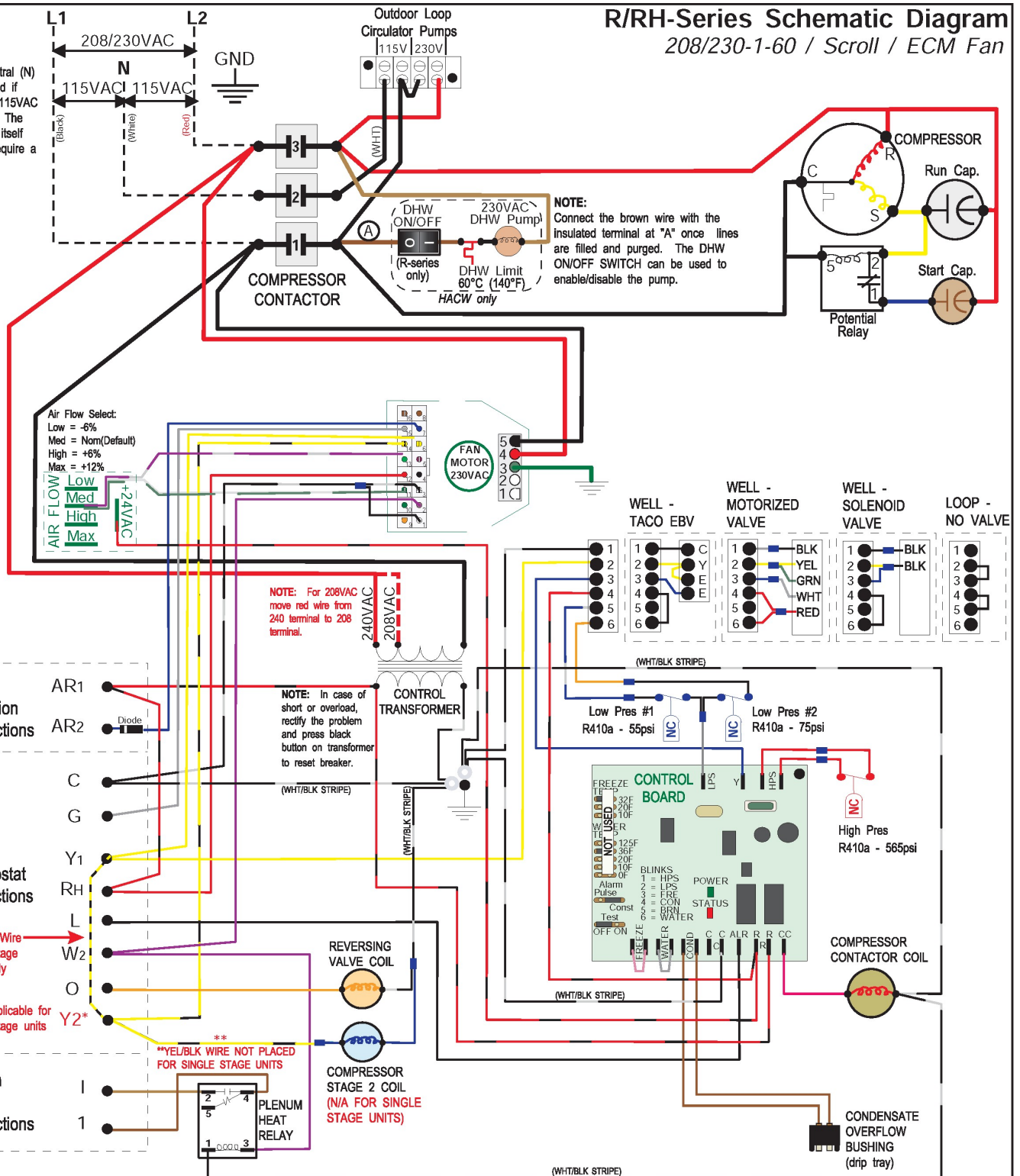
* Values in this table are for rated liquid and airflow values.

Loop Pressure Drop Data			Water 104°F		Water 50°F		15% Methanol 32°F		35% prop. glycol 32°F	
	gpm	L/s	psi	kPa	psi	kPa	psi	kPa	psi	kPa
R-80	9	0.57	1.2	8.3	1.3	9.0	1.4	10	1.8	13
	10	0.63	1.5	10	1.6	11	1.7	12	2.2	15
	11	0.69	1.8	12	1.9	13	2.2	15	2.9	20
	12	0.76	2.2	15	2.4	17	2.6	18	3.4	24
	13	0.82	2.5	17	2.7	19	3.1	21	4.1	28
	14	0.88	2.9	20	3.1	21	3.5	24	4.6	32
	15	0.95	3.1	21	3.3	23	3.8	26	5.0	34
	16	1.01	3.3	23	3.6	25	4.1	28	5.4	37
	17	1.07	3.7	26	4.1	28	4.6	32	6.0	42
18	1.14	4.2	29	4.5	31	4.9	34	6.4	44	

Wiring Diagram (208/230-1-60)

R/RH-Series Schematic Diagram 208/230-1-60 / Scroll / ECM Fan

NOTE: Neutral (N) only required if connecting 115VAC circulators. The heat pump itself does not require a neutral.



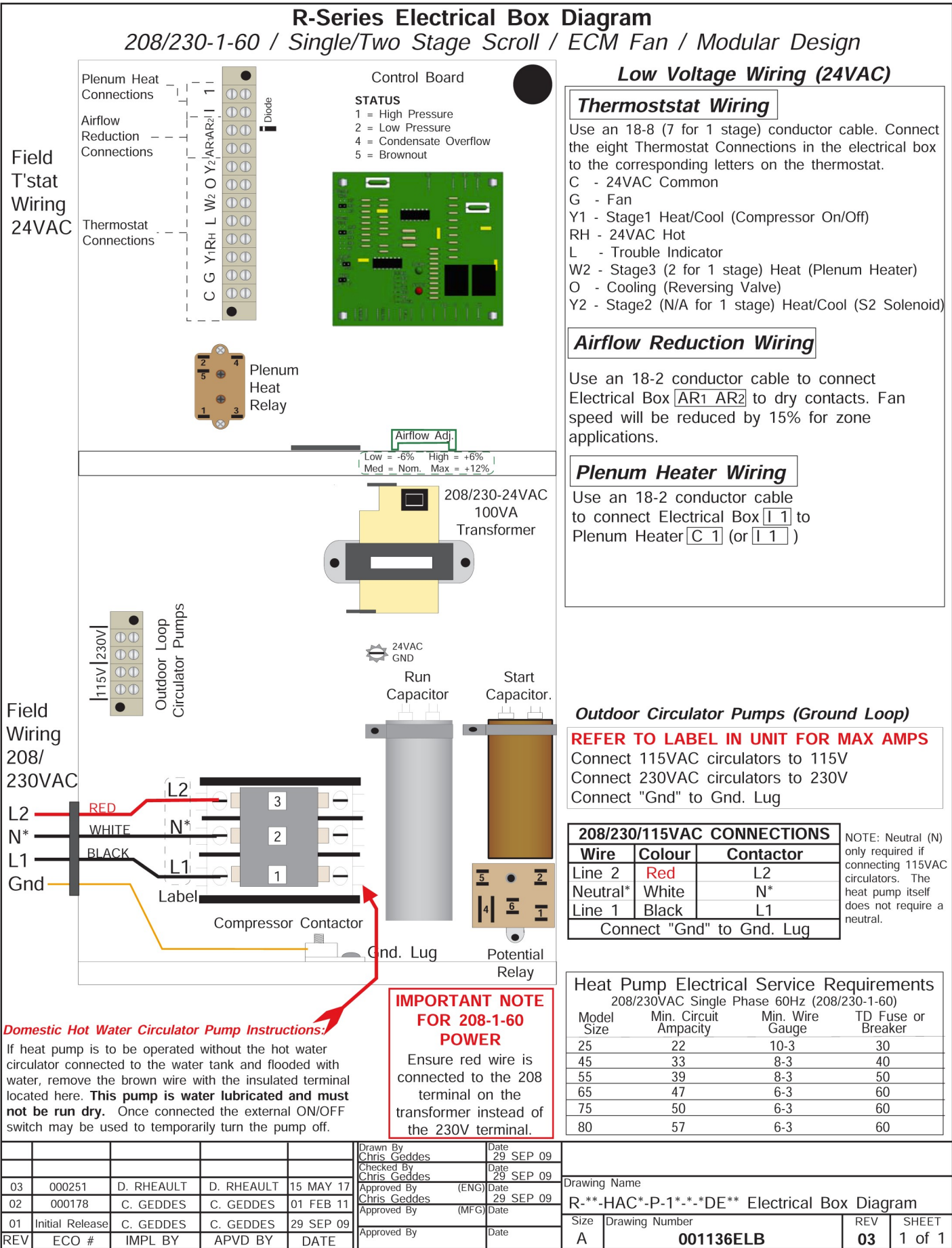
PLENUM HEATER OPERATION

- I & 1 provides a dry contact for operating plenum heater.
- Fan will run automatically with thermostat W₂ signal.

AIRFLOW REDUCTION

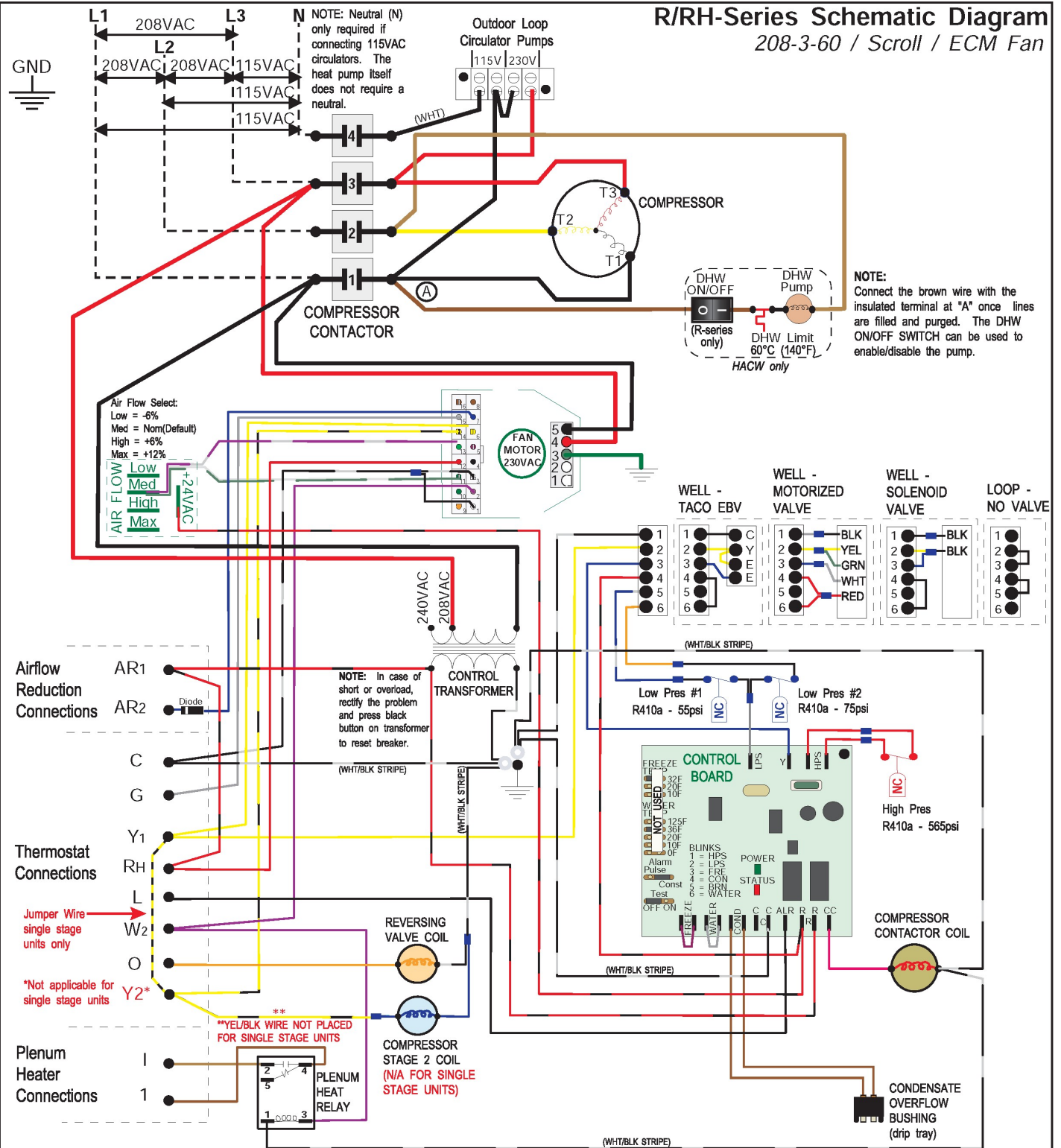
Connect AR₁ & AR₂ together with dry contact to reduce the airflow for zone applications.

05	000305	D. RHEAULT	D. RHEAULT	6 SEP 2022	Drawn By Chris Geddes	Date 01 MAY 2013	MARITIME GEOTHERMAL LTD. 170 Plantation Rd. Petitcodiac, NB E4Z 6H4
04	000294	D. RHEAULT	D. RHEAULT	1 NOV 2021	Checked By Chris Geddes	Date 01 MAY 2013	
03	000251	D. RHEAULT	D. RHEAULT	15 MAY 2017	Approved By Chris Geddes (ENG)	Date 01 MAY 2013	
02	000229	C. GEDDES	C. GEDDES	01 APR 2015	Approved By Chris Geddes (MFG)	Date	
01	000212 (IR)	C. GEDDES	C. GEDDES	01 MAY 2013	Approved By	Date	Drawing Name R/RH-**-HAC*-P-1*-*DE** Schematic Diagram
REV	ECO #	IMPL BY	APVD BY	DATE	Approved By	Date	
A							Size Drawing Number 001754SCH
							Drawing Rev SHEET 05 1 of 1



Wiring Diagram (208-3-60)

R/RH-Series Schematic Diagram 208-3-60 / Scroll / ECM Fan

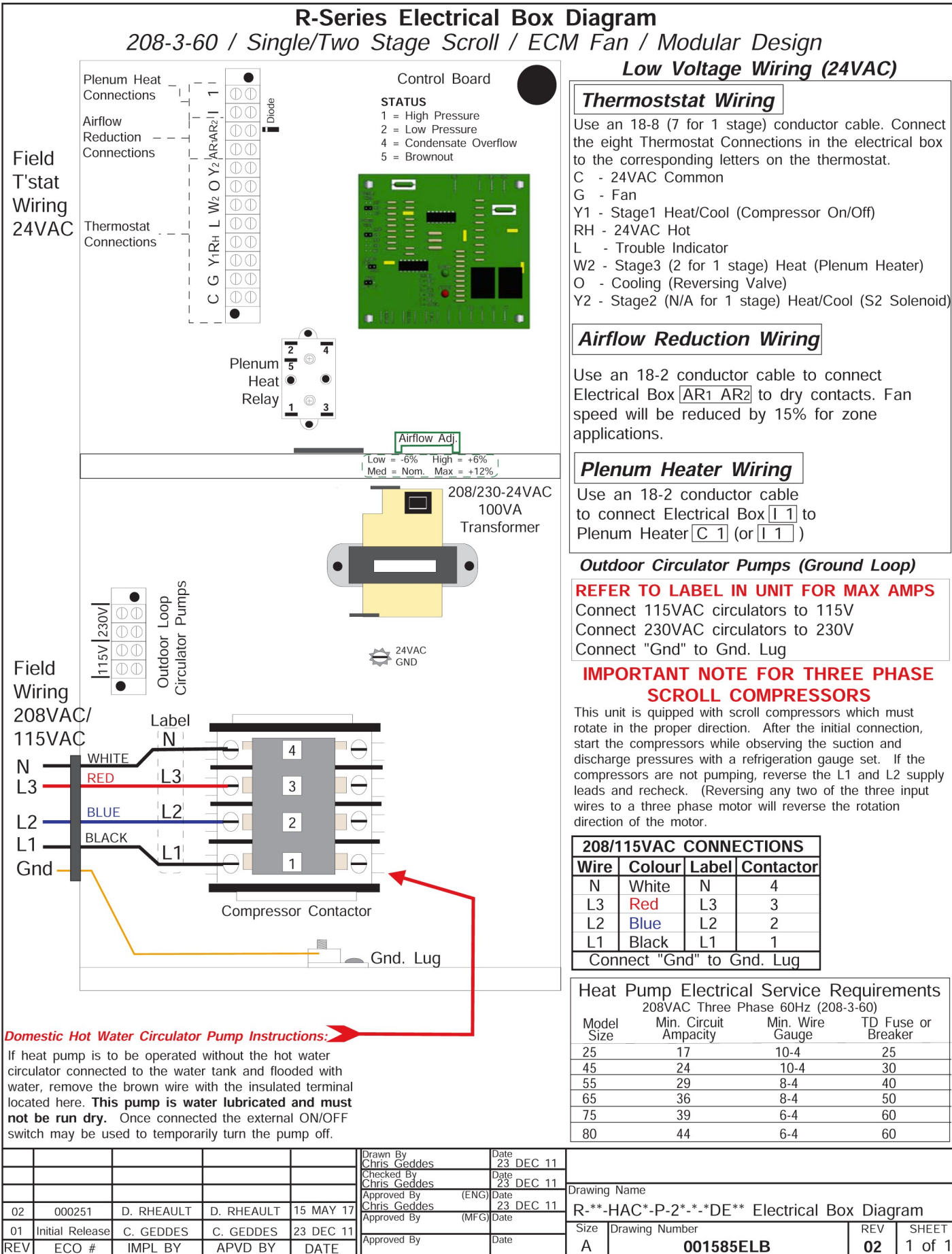


PLENUM HEATER OPERATION

- I & 1 provides a dry contact for operating plenum heater.
- Fan will run automatically with thermostat W2 signal.

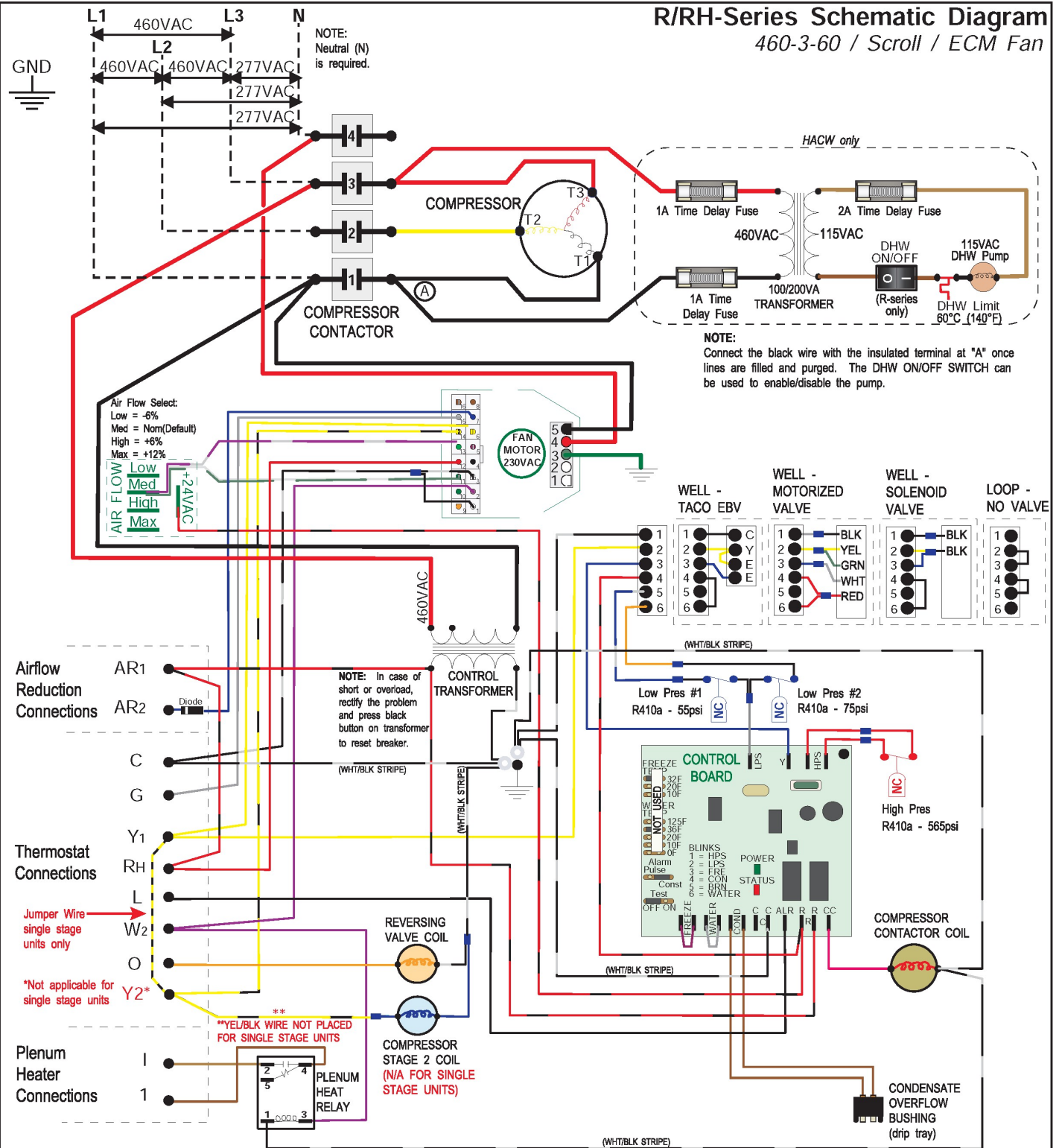
AIRFLOW REDUCTION
Connect AR1 & AR2 together with dry contact to reduce the airflow for zone applications.

05	000305	D. RHEAULT	D. RHEAULT	6 SEP 2022	Drawn By Chris Geddes	Date 01 MAY 2013	MARITIME GEOTHERMAL LTD. 170 Plantation Rd. Petitcodiac, NB E4Z 6H4
04	000294	D. RHEAULT	D. RHEAULT	1 NOV 2021	Checked By Chris Geddes	Date 01 MAY 2013	
03	000251	D. RHEAULT	D. RHEAULT	15 MAY 2017	Approved By Chris Geddes (ENG)	Date 01 MAY 2013	
02	000229	C. GEDDES	C. GEDDES	01 APR 2015	Approved By Chris Geddes (MFG)	Date	
01	000212 (IR)	C. GEDDES	C. GEDDES	01 MAY 2013	Approved By	Date	Drawing Name R/RH-**-HAC*-P-2*-*DE** Schematic Diagram
REV	ECO #	IMPL BY	APVD BY	DATE	Approved By	Date	
A							Size Drawing Number 001756SCH
							Drawing Rev 05
							SHEET 1 of 1



Wiring Diagram (460-3-60)

R/RH-Series Schematic Diagram 460-3-60 / Scroll / ECM Fan



PLENUM HEATER OPERATION

- I & 1 provides a dry contact for operating plenum heater.
- Fan will run automatically with thermostat W₂ signal.

AIRFLOW REDUCTION

Connect AR₁ & AR₂ together with dry contact to reduce the airflow for zone applications.

05	000305	D. RHEAULT	D. RHEAULT	6 SEP 2022	Drawn By Chris Geddes	Date 14 JUN 2016	MARITIME GEOTHERMAL LTD. 170 Plantation Rd. Petitcodiac, NB E4Z 6H4
04	000294	D. RHEAULT	D. RHEAULT	1 NOV 2021	Checked By Chris Geddes	Date 14 JUN 2016	
03	000251	D. RHEAULT	D. RHEAULT	15 MAY 2017	Approved By Chris Geddes (ENG)	Date 14 JUN 2016	
01	IR	C. GEDDES	C. GEDDES	14 JUN 2016	Approved By (MFG)	Date	
REV	ECO #	IMPL BY	APVD BY	DATE	Approved By	Date	Drawing Name R/RH-**-HAC*-P-4*-*DE** Schematic Diagram Size Drawing Number A 002115SCH Drawing Rev SHEET 05 1 of 1

Electrical Box Layout (460-3-60)

R-Series Electrical Box Diagram

460-3-60 / Single/Two Stage Scroll / ECM Fan / Modular Design

Low Voltage Wiring (24VAC)

Thermostat Wiring

Use an 18-8 (7 for 1 stage) conductor cable. Connect the eight Thermostat Connections in the electrical box to the corresponding letters on the thermostat.
 C - 24VAC Common
 G - Fan
 Y1 - Stage1 Heat/Cool (Compressor On/Off)
 RH - 24VAC Hot
 L - Trouble Indicator
 W2 - Stage3 (2 for 1 stage) Heat (Plenum Heater)
 O - Cooling (Reversing Valve)
 Y2 - Stage2 (N/A for 1 stage) Heat/Cool (S2 Solenoid)

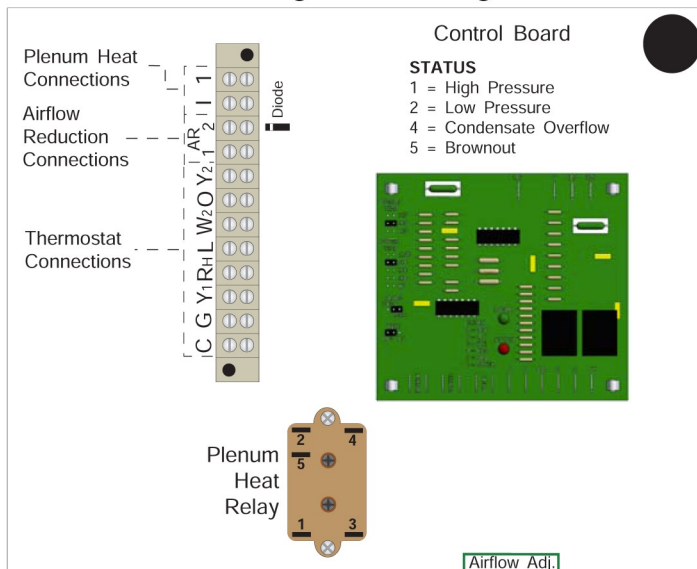
Airflow Reduction Wiring

Use an 18-2 conductor cable to connect Electrical Box AR1 AR2 to dry contacts. Fan speed will be reduced by 15% for zone applications.

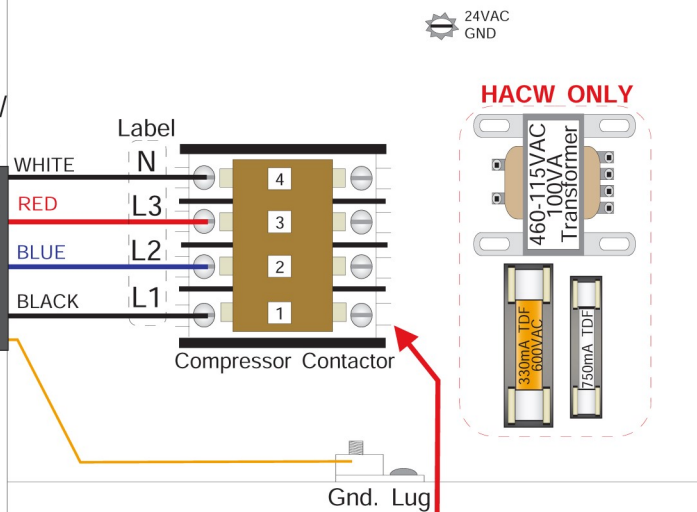
Plenum Heater Wiring

Use an 18-2 conductor cable to connect Electrical Box I1 to Plenum Heater C1 (or I1)

Field
T'stat
Wiring
24VAC



Field
Wiring
460VAC/
277VAC



IMPORTANT NOTE FOR THREE PHASE SCROLL COMPRESSORS

This unit is equipped with scroll compressors which must rotate in the proper direction. After the initial connection, start the compressors while observing the suction and discharge pressures with a refrigeration gauge set. If the compressors are not pumping, reverse the L1 and L2 supply leads and recheck. (Reversing any two of the three input wires to a three phase motor will reverse the rotation direction of the motor.)

460/277VAC CONNECTIONS

Wire	Colour	Label	Contact
N	White	N	4
L3	Red	L3	3
L2	Blue	L2	2
L1	Black	L1	1

Connect "Gnd" to Gnd. Lug

Heat Pump Electrical Service Requirements

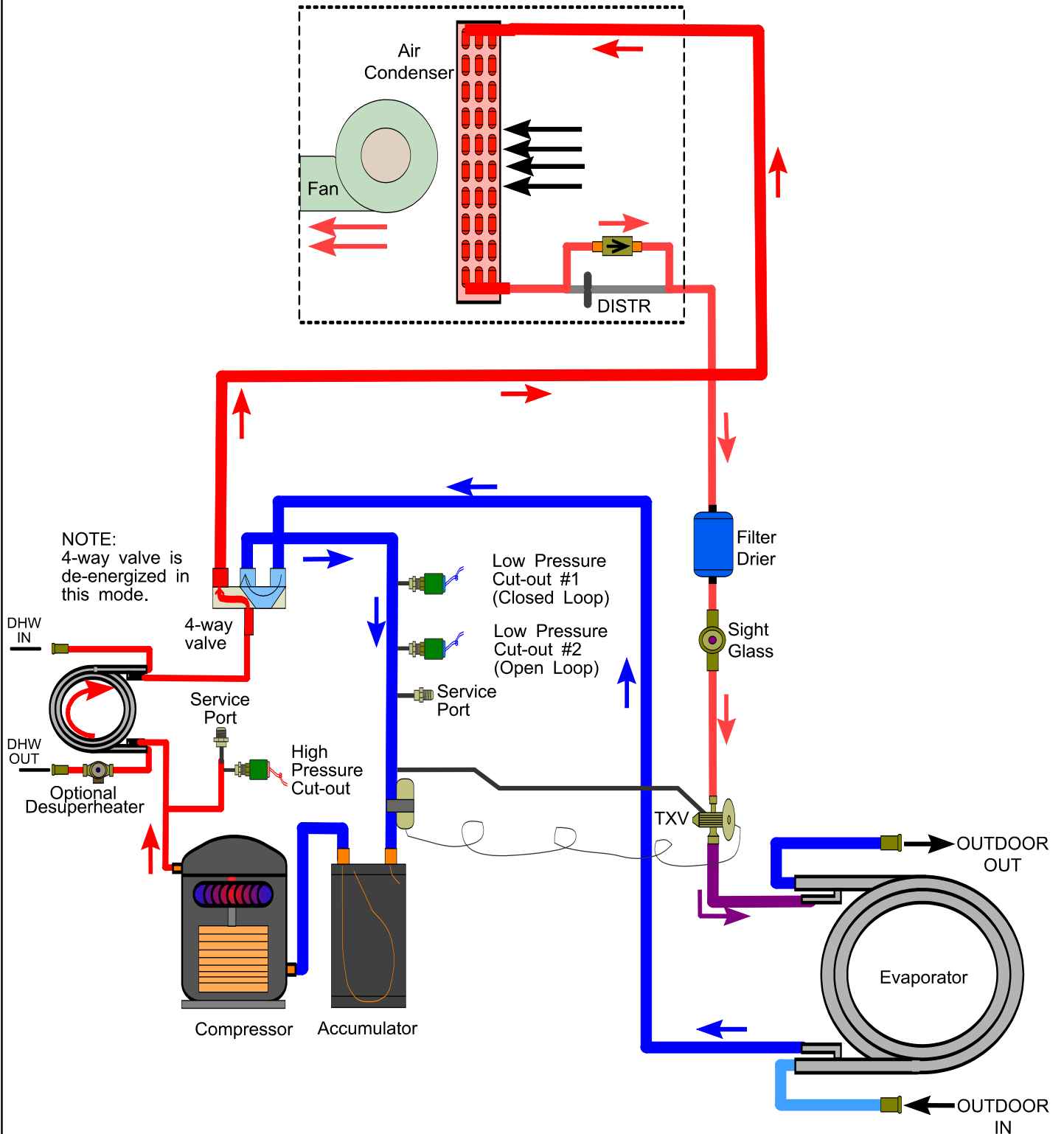
460VAC Single Phase 60Hz (460-1-60)			
Model Size	Min. Circuit Ampacity	Min. Wire Gauge	TD Fuse or Breaker
80	21	10-4	30

Domestic Hot Water Circulator Pump Instructions (HACW only):

If heat pump is to be operated without the hot water circulator connected to the water tank and flooded with water, remove the brown wire with the insulated terminal located here. **This pump is water lubricated and must not be run dry.** Once connected the external ON/OFF switch may be used to temporarily turn the pump off.

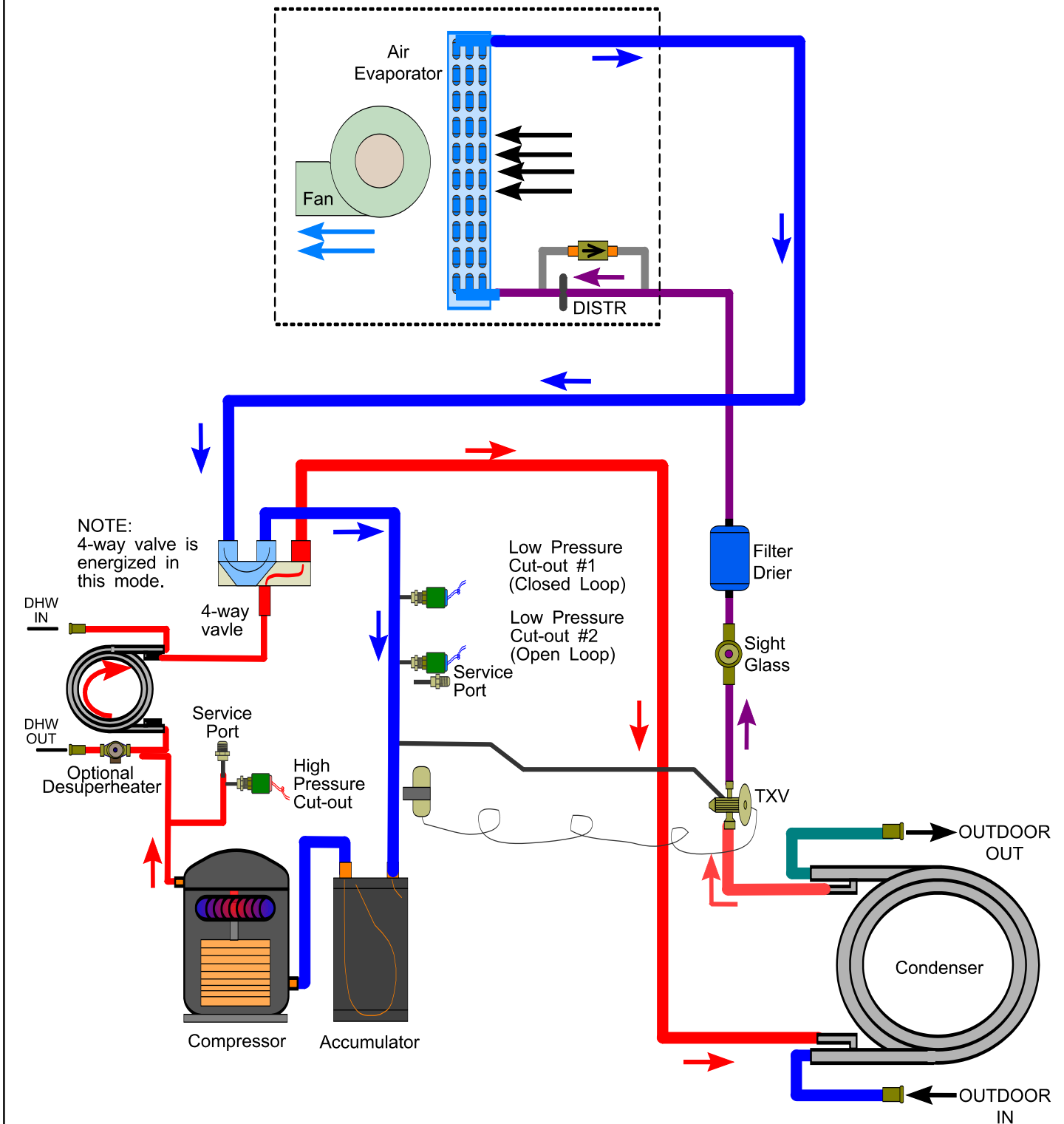
Drawn By Chris Geddes					Date 14 JUN 2016			
Checked By Chris Geddes					Date 14 JUN 2016			
Approved By (ENG) Chris Geddes					Date 14 JUN 2016			
Approved By (MFG)					Date			
Approved By					Date			
02	000251	D. RHEULT	D. RHEULT	15 MAY 2017	Drawing Name R-80-HAC*-P-4*-DE** Electrical Box Diagram			
01	Initial Release	C. GEDDES	C. GEDDES	14 JUN 2016				
REV	ECO #	IMPL BY	APVD BY	DATE	Size A	Drawing Number 002020ELB	Drawing Rev 02	Sheet 1 of 1

R(H)-Series Refrigeration Circuit - Heating Mode



					Drawn By Chris Geddes	Date 25 JAN 10	MARITIME GEOTHERMAL LTD. 170 Plantation Rd. Petitcodiac, NB E4Z 6H4	
					Checked By Chris Geddes	Date 25 JAN 10		
03	000212	D. RHEAULT	C. GEDDES	01 JAN 2014	Approved By (ENG)	Date 25 JAN 10	Drawing Name R(H)-Series Refrigeration Circuit Diagram - Heating Mode	
02	000203	D. RHEAULT	D. RHEAULT	26 SEP 12	Approved By (MFG)	Date		
01	Initial Release	C. GEDDES	C. GEDDES	25 JAN 10	Approved By	Date	Size A	Drawing Number 001207RCD
REV	ECO #	IMPL BY	APVD BY	DATE			Drawing Rev 03	SHEET 1 of 1

R(H)-Series Refrigeration Circuit - Cooling Mode



					Drawn By Chris Geddes	Date 25 JAN 10	<div>MARITIME GEOTHERMAL LTD.</div>		170 Plantation Rd. Petitcodiac, NB E4Z 6H4	
					Checked By Chris Geddes	Date 25 JAN 10				
03	000212	C. GEDDES	C. GEDDES	01 JAN 2014	Approved By Chris Geddes	(ENG) Date 25 JAN 10	Drawing Name R(H)-Series Refrigeration Circuit Diagram - Cooling Mode			
02	000203	D. RHEAULT	D. RHEAULT	26 SEP 12	Approved By Chris Geddes	(MFG) Date 25 JAN 10				
01	Initial Release	C. GEDDES	C. GEDDES	25 JAN 10			Size A	Drawing Number 001208RCD	Drawing Rev 03	SHEET 1 of 1
REV	ECO #	IMPL BY	APVD BY	DATE						

Standard Capacity Ratings

Standards C13256-1 / ISO13256-1 / ARI 13256-1

Standard Capacity Ratings - Ground Loop Heating*									60Hz
EAT 68°F (20°C)					* 15% NaCl by Weight Ground Loop Fluid				
					ELT 32°F (0°C)				
Model	Nominal Size	Liquid Flow		Airflow		Input Energy	Capacity		COP _H
	tons	gpm	L/s	cfm	L/s	Watts	Btu/hr	kW	W/W
R-80	6	17.0	1.07	2300	1085	4,940	63,000	18.5	3.5

Standard Capacity Ratings - Ground Water Heating									60Hz
EAT 68°F (20°C)					ELT 50°F (10°C)				
Model	Nominal Size	Liquid Flow		Airflow		Input Energy	Capacity		COP _H
	tons	gpm	L/s	cfm	L/s	Watts	Btu/hr	kW	W/W
R-80	6	17.0	1.07	2300	1085	5,315	77,500	22.7	4.1

Standard Capacity Ratings - Ground Loop Cooling*									60Hz	
EAT 80.6°F (27°C)					* 15% NaCl by Weight Ground Loop Fluid				ELT 77°F (25°C)	
Model	Size	Liquid Flow		Airflow		Input Energy	Capacity		COP _c	EER
	tons	gpm	L/s	cfm	L/s	Watts	Btu/hr	kW	W/W	Btu/W
R-80	6	17.0	1.07	2300	1085	4,950	81,500	23.9	4.5	15.4

Standard Capacity Ratings - Ground Water Cooling									60Hz	
EAT 80.6°F (27°C)						ELT 59°F (15°C)				
Model	Size	Liquid Flow		Airflow		Input Energy	Capacity		COP _c	EER
	tons	gpm	L/s	cfm	L/s	Watts	Btu/hr	kW	W/W	Btu/W
R-80	6	17.0	1.07	2300	1085	4,130	86,500	25.4	5.8	19.6

Performance Tables

R-80-HACW-P-1S R410a, 60 Hz, ZP72KCE-PFV

HEATING	OUTDOOR LOOP (15% Methanol)						ELECTRICAL			INDOOR LOOP (Air)						
	ELT (°F)	Evap. Temp.	Flow (gpm)	LLT (°F)	Delta T (°F)	Heat Abs. (Btu/hr)	Compressor Current (A)	Fan (W)	Input Power (W)	EAT (°F)	Cond. Temp.	Airflow (cfm)	LAT (°F)	Delta T (°F)	Heating (Btu/hr)	COP _H
	25	15	17	20	4.9	40,600	22.2	410	5,173	68	99	2,300	93	25.2	57,900	3.28
	30	19	17	25	5.3	44,000	22.5	410	5,246		100	2,300	95	26.8	61,600	3.44
	35	24	17	29	5.7	47,500	22.8	410	5,316		102	2,300	96	28.4	65,300	3.60
	40	28	17	34	6.1	51,200	23.1	410	5,393		104	2,300	98	30.1	69,200	3.76
	45	33	17	38	6.6	54,900	23.4	410	5,465		106	2,300	100	31.8	73,200	3.93
	50	37	17	43	7.1	59,000	23.7	410	5,540		107	2,300	102	33.7	77,500	4.10
	55	42	17	47	7.6	63,200	24.0	410	5,618		109	2,300	104	35.6	81,900	4.27
	60	46	17	52	8.1	67,500	24.4	410	5,702		111	2,300	106	37.6	86,500	4.45

COOLING	OUTDOOR LOOP (15% Methanol)						ELECTRICAL			INDOOR LOOP (Air @ 46% RH)								
	ELT (°F)	Cond. Temp.	Flow (gpm)	LLT (°F)	Delta T (°F)	Heat Rej. (Btu/hr)	Compressor Current (A)	Fan (W)	Input Power (W)	EAT (°F)	Evap. Temp.	Airflow (cfm)	LAT (°F)	Delta T (°F)	Latent (Btu/hr)	Sensible (Btu/hr)	Cooling (Btu/hr)	EER
	55	79	17	67	12.2	101,200	17.5	308	4,209	80.6	46	2,300	54	26.7	26,300	61,300	87,600	20.8
	60	84	17	72	12.1	100,600	18.7	308	4,452		46	2,300	54	26.2	25,900	60,300	86,200	19.4
	65	90	17	77	12.0	100,000	20.0	308	4,695		46	2,300	55	25.8	25,400	59,400	84,800	18.1
	70	95	17	82	11.9	99,500	21.2	308	4,942		47	2,300	55	25.4	25,000	58,400	83,400	16.9
	75	100	17	87	11.9	98,900	22.4	308	5,199		47	2,300	56	25.0	24,600	57,400	82,000	15.8
	80	106	17	92	11.8	98,600	23.7	308	5,470		48	2,300	56	24.6	24,200	56,500	80,700	14.8
	85	111	17	97	11.8	98,000	25.0	308	5,757		48	2,300	57	24.1	23,700	55,500	79,200	13.8
	90	116	17	102	11.7	97,500	26.5	308	6,068		48	2,300	57	23.6	23,300	54,300	77,600	12.8

METRIC

HEATING	OUTDOOR LOOP (15% Methanol)						ELECTRICAL			INDOOR LOOP (Air)						
	ELT (°C)	Evap. Temp.	Flow (L/s)	LLT (°C)	Delta T (°C)	Heat Abs. (kW)	Compressor Current (A)	Fan (W)	Input Power (W)	EAT (°C)	Cond. Temp.	Airflow (L/s)	LAT (°C)	Delta T (°C)	Heating (kW)	COP _H
	-3.9	-9.6	1.1	-6.6	2.7	11.90	22.2	410	5,173	20	37.0	1,085	34.0	14.0	17.00	3.28
	-1.1	-7.1	1.1	-4.0	2.9	12.90	22.5	410	5,246		37.9	1,085	34.9	14.9	18.10	3.44
	1.7	-4.6	1.1	-1.5	3.2	13.90	22.8	410	5,316		38.9	1,085	35.8	15.8	19.10	3.60
	4.4	-2.1	1.1	1.0	3.4	15.00	23.1	410	5,393		39.9	1,085	36.7	16.7	20.30	3.76
	7.2	0.3	1.1	3.5	3.7	16.10	23.4	410	5,465		40.8	1,085	37.7	17.7	21.50	3.93
	10.0	2.8	1.1	6.1	3.9	17.30	23.7	410	5,540		41.8	1,085	38.7	18.7	22.70	4.10
	12.8	5.3	1.1	8.6	4.2	18.50	24.0	410	5,618		42.7	1,085	39.8	19.8	24.00	4.27
	15.6	7.8	1.1	11.1	4.5	19.80	24.4	410	5,702		43.7	1,085	40.9	20.9	25.40	4.45

COOLING	OUTDOOR LOOP (15% Methanol)						ELECTRICAL			INDOOR LOOP (Air @ 46% RH)								
	ELT (°C)	Cond. Temp.	Flow (L/s)	LLT (°C)	Delta T (°C)	Heat Rej. (kW)	Compressor Current (A)	Fan (W)	Input Power (W)	EAT (°C)	Evap. Temp.	Airflow (L/s)	LAT (°C)	Delta T (°C)	Latent (W)	Sensible (kW)	Cooling (kW)	COP _c
	12.8	26.1	1.1	19.6	6.8	29.66	17.5	308	4,209	27	7.5	1,085	12.2	14.8	7.71	18.00	25.70	6.10
	15.6	29.1	1.1	22.3	6.7	29.48	18.7	308	4,452		7.7	1,085	12.4	14.6	7.59	17.70	25.30	5.69
	18.3	32.0	1.1	25.0	6.7	29.31	20.0	308	4,695		7.9	1,085	12.7	14.3	7.44	17.40	24.90	5.30
	21.1	34.9	1.1	27.7	6.6	29.20	21.2	308	4,942		8.2	1,085	12.9	14.1	7.33	17.10	24.40	4.95
	23.9	37.9	1.1	30.5	6.6	29.00	22.4	308	5,199		8.4	1,085	13.1	13.9	7.21	16.80	24.00	4.63
	26.7	40.8	1.1	33.3	6.6	28.90	23.7	308	5,470		8.7	1,085	13.3	13.7	7.09	16.60	23.70	4.34
	29.4	43.8	1.1	36.0	6.6	28.70	25.0	308	5,757		8.9	1,085	13.6	13.4	6.95	16.30	23.20	4.04
	32.2	46.7	1.1	38.7	6.5	28.60	26.5	308	6,068		9.1	1,085	13.9	13.1	6.83	15.90	22.70	3.75

Airflow Data

MED Airflow (nominal)												
	STAGE 2				STAGE 1				FAN ONLY (Recirculation)			
Model	Full		AR1-AR2 reduction		Full		AR1-AR2 reduction		Full		AR1-AR2 reduction	
	cfm	L/s	cfm	L/s	cfm	L/s	cfm	L/s	cfm	L/s	cfm	L/s
25	800	378	680	321	680	321	578	273	448	211	381	180
45	1200	566	1020	481	1030	486	876	413	672	317	571	270
55	1500	708	1275	602	1240	585	1054	497	840	396	714	337
65	1900	897	1615	762	1540	727	1309	618	1064	502	904	427
75	2100	991	1785	842	1660	783	1411	666	1176	555	1000	472
80	2300	1085	1955	922	N/A	N/A	N/A	N/A	1288	608	1095	517

LOW Airflow (-6%)												
	STAGE 2				STAGE 1				FAN ONLY (Recirculation)			
Model	Full		AR1-AR2 reduction		Full		AR1-AR2 reduction		Full		AR1-AR2 reduction	
	cfm	L/s	cfm	L/s	cfm	L/s	cfm	L/s	cfm	L/s	cfm	L/s
25	752	355	639	302	639	302	543	256	421	199	358	169
45	1128	532	959	453	968	457	823	388	632	298	537	253
55	1410	665	1199	566	1166	550	991	468	790	373	671	317
65	1786	843	1518	716	1448	683	1230	581	1000	472	850	401
75	1974	932	1678	792	1560	736	1326	626	1105	522	940	443
80	2162	1020	1838	867	N/A	N/A	N/A	N/A	1211	572	1029	486

HIGH Airflow (+6%)												
	STAGE 2				STAGE 1				FAN ONLY (Recirculation)			
Model	Full		AR1-AR2 reduction		Full		AR1-AR2 reduction		Full		AR1-AR2 reduction	
	cfm	L/s	cfm	L/s	cfm	L/s	cfm	L/s	cfm	L/s	cfm	L/s
25	848	400	721	340	721	340	613	289	475	224	404	191
45	1272	600	1081	510	1092	515	928	438	712	336	605	286
55	1590	750	1352	638	1314	620	1117	527	890	420	757	357
65	2014	951	1712	808	1632	770	1388	655	1128	532	959	452
75	2226	1051	1892	893	1760	830	1496	706	1400	661	1190	562
80	2438	1150	2072	977	N/A	N/A	N/A	N/A	1365	644	1161	548

MAX Airflow (+12%)												
	STAGE 2				STAGE 1				FAN ONLY (Recirculation)			
Model	Full		AR1-AR2 reduction		Full		AR1-AR2 reduction		Full		AR1-AR2 reduction	
	cfm	L/s	cfm	L/s	cfm	L/s	cfm	L/s	cfm	L/s	cfm	L/s
25	896	423	762	359	762	359	647	306	502	237	426	201
45	1344	634	1142	539	1154	544	981	463	753	355	640	302
55	1680	793	1428	674	1389	655	1180	557	941	444	800	377
65	2128	1004	1809	854	1725	814	1466	692	1192	562	1013	478
75	2352	1110	1999	944	1859	877	1580	746	1317	622	1120	528
80	2500	1180	2190	1033	N/A	N/A	N/A	N/A	1443	681	1226	579

Maximum external static pressure (all model sizes): 0.50 inH₂O

Engineering Guide Specifications

General

The liquid source reversing water-to-air heat pump shall be a single packaged reverse-cycle heating/cooling unit, with desuperheating circuit for domestic hot water heating. The unit shall be listed by a nationally recognized safety-testing laboratory (NRTL), such as TUV, ETL, UL, or CSA. The unit shall be rated in accordance with applicable standards of the Air Conditioning, Heating, and Refrigeration Institute / International Standards Organization (AHRI/ISO) and/or Canadian Standards Association (CSA). The liquid source water to water heat pump unit, as manufactured by Maritime Geothermal, Petitcodiac, New Brunswick, shall be designed to operate correctly within liquid temperature ranges specified on the "Minimum and Maximum Operating Temperatures" page of this engineering specification document.

Factory Quality

Each unit shall be run tested at the factory with water circulating through the outdoor loop and air circulating through the indoor loop. Quality control system checks shall include: computerized nitrogen pressurized leak test, evacuation of refrigeration circuit to sustained vacuum, accurate system charge, detailed heating and cooling mode tests, and quality cross check all operational and test conditions to pass/fail criteria. Units tested without water and air flow are not acceptable. The units shall be warranted by the manufacturer against defects in materials and workmanship in accordance with the warranty section at the end of this document. Optional extended factory warranty coverage may be available.

Cabinet

Each unit shall be enclosed in a sheet metal cabinet. Cabinet shall be constructed of powder coated galvanized sheet metal of minimum 20 gauge. Sheet metal gauge shall be higher where structurally required. Design and construction of cabinet shall be such that it is rigid and passes the CSA/UL Loading Test requirements (200 lb roof test and 25 lb guard test). All panels shall be lined with minimum 1/2 inch [12.7 mm] thick acoustic type glass fiber insulation. All insulation shall meet the fire retardant provisions of NFPA 90A. This material shall also provide acoustical benefit. The unit must have a minimum of three access panels for serviceability of the compressor compartment. Units having only one access panel to compressor/heat exchangers/expansion device/refrigerant piping shall not be acceptable. The electrical box shall have separate holes and knockouts for entrance of line voltage and low voltage control wiring. All factory-installed wiring passing through factory knockouts and openings shall be protected from sheet metal edges at openings by plastic grommets.

Refrigerant Circuit

All units shall contain only one sealed refrigerant circuit, containing a hermetic motor scroll compressor, coaxial heat exchanger, refrigerant to air exchanger, thermostatic expansion valve (TXV), reversing valve, factory installed high and low pressure safety switches, service ports, liquid line filter-dryer, sight glass, desuperheating heat exchanger, and suction accumulator.

Compressors shall be specified for heat pump duty with internal isolation consisting of rubber vibration isolators between the compressor and mounting plate, and rubber vibration isolators between the mounting plate and cabinet. Compressor motors shall have internal overload protection.

The water to refrigerant heat exchangers shall consist of a steel outer jacket with twisted copper inner tube, designed and certified for 600 psig [4136 kPa] working pressure on the refrigerant side and 450 psig [3108 kPa] on the water side. Heat exchangers headered together in parallel shall use a reverse-return or symmetrical arrangement on the water side and symmetrical arrangement on the refrigerant side to ensure even flow splitting. Heat exchangers shall be insulated over all of their outside surface with minimum 3/8" thick closed cell insulation. Insulation consisting of 1/8" closed-cell insulating tape shall not be acceptable. Cupro-nickel (CuNi) inner tube shall be available as a factory option.

The refrigerant to air heat exchanger shall be a multi-circuit design with copper tubing and aluminum fins with refrigerant distributor for cooling mode. It shall be designed and certified for 650 psig [4482kPa] working pressure on the refrigerant side.

The thermostatic expansion valve shall be a balanced port bi-flow type with internal bleed and shall provide proper superheat control over the unit's operating range with minimal deviation from the superheat setpoint.

Fan/Blower

The blower shall be a squirrel cage type, constructed of corrosion resistant material, with unobstructed removable venturi to allow one-side servicing of fan motor. The fan return may be specified as left or right at the time of manufacture. The fan may be top or side discharge and is field configurable.

The fan motor shall be direct drive electrically commutated motor (ECM) with soft start, variable speed, and constant airflow functionality that maintains selected air flow up to the maximum external static as indicated in the ECM Fan Air Flow Tables section of this specification.

Auxiliary Heat (Plenum Heater)

With the fan configured as top discharge, an optional plenum heater may be field installed inside the air compartment of the unit. Provisions for mounting and electrical connections are supplied. Installations requiring side discharge required the plenum heater to be mounted external to the unit.

Condensate Tray

The condensate tray shall be made of stainless steel and be large enough to catch any condensation that may drip from the refrigerant to air exchanger during cooling operation. The condensate drain shall be clear tubing with a 3/4" PVC female socket fitting for external drain connection.

Piping and Connections

The unit shall have one set of primary water in and water out connections (outdoor loop). The primary connection type shall be 1" nominal female National Pipe Thread (NPT). Domestic hot water (desuperheater) water connectors shall be 1/2" nominal female National Pipe Thread (NPT). All water connectors shall be rigidly mounted to cabinet with corrosion resistant fasteners to prevent relative movement. All water connectors shall be constructed of copper or brass material for corrosion resistance.

All internal water and refrigerant piping shall be insulated with minimum 3/8" thick closed cell insulation. Insulation consisting of 1/8" closed-cell insulating tape shall not be acceptable.

Electrical

Controls and safety devices shall be factory wired and mounted within the unit. Controls shall include a 24 volt alternating current (24VAC) 75VA class II control transformer with resettable breaker for short circuit protection for providing power to all internal controls as well as a remote thermostat. Terminal strips with screw in terminals shall be provided for field control wiring, power supply line connections and 115/230VAC power supply for outdoor loop (ground loop) circulators. Units shall be name-plated for use with time delay fuses or circuit breakers.

Unit Control

The control system shall have the following features:

1. Anti-short cycle time delay on compressor operation. Time delay shall be a minimum of 5 minutes, for both thermostat demand and safety control reset starts. A test jumper shall be provided to disable this delay for unit commissioning and testing purposes. The unit shall revert to normal operation after a time delay if the test jumper is accidentally left in place.
2. Random compressor start delay of 0-120 seconds (in addition to 5 minute anti-short cycle timer) on unit power up to facilitate starting multiple units on one disconnect switch or after a power failure.
3. Compressor shutdown for high or low refrigerant pressures.
4. Condensate overflow protection, using two contacts in the drip tray (not a mechanical or electronic switch).
5. Low grid voltage or 'brownout' protection, which will prevent compressor operation if low voltage is detected.
6. Automatic intelligent reset: unit shall automatically restart 5 minutes after a trip if the fault has cleared. Should a fault reoccur again within 60 minutes then a permanent lockout shall occur, requiring cycling of the power to the unit in order to reset.
6. Tap board for airflow adjustment for the following settings: Nominal, -6%, +6% and +12%
7. Dry contact input for overall air flow reduction of 15% for zoning application.

Maritime Geothermal works continually to improve its products. As a result, the design and specifications of any product may be changed without notice. Please contact Maritime Geothermal at 1-506-756-8135 or visit www.nordicghp.com for latest design and specifications. Purchaser's approval of this data set signifies that the equipment is acceptable under the provisions of the job specification. Statements and other information contained herein are not express warranties and do not form the basis of any commercial contract or other agreement between any parties, but are merely Maritime Geothermal's statement of opinion regarding its products.

Warranty: R-Series

RESIDENTIAL LIMITED EXPRESS WARRANTY

Unless a statement is specifically identified as a warranty, statements made by Maritime Geothermal Ltd. ("MG") or its representatives relating to MG's products, whether oral, written or contained in any sales literature, catalogue or agreement, are not express warranties and do not form a part of the basis of the bargain, but are merely MG's opinion or commendation of MG's products.

SET FORTH HERE IS THE ONLY EXPRESS WARRANTY THAT APPLIES TO MG'S PRODUCTS. MG MAKES NO WARRANTY AGAINST LATENT DEFECTS. MG MAKES NO WARRANTY OF MERCHANTABILITY OF THE GOODS OR OF THE FITNESS OF THE GOODS FOR ANY PARTICULAR PURPOSE.

LIMITED EXPRESS RESIDENTIAL WARRANTY - PARTS

MG warrants its Residential Class products, purchased and retained in the United States of America and Canada, to be free from defects in material and workmanship under normal use and maintenance as follows:

- (1) Air conditioning, heating and/or heat pump units built or sold by MG ("MG Units") for five (5) years from the Warranty Inception Date (as defined below).
- (2) Thermostats, auxiliary electric heaters and geothermal pumping modules built or sold by MG, when installed with MG Units, for five (5) years from the Warranty Inception Date (as defined below).
- (3) Sealed refrigerant circuit components of MG Units (which components only include the compressor, refrigerant to air/water heat exchangers, reversing valve body and refrigerant metering device) for ten (10) years from the Warranty Inception Date (as defined below).
- (4) Other accessories and parts built or sold by MG, when installed and purchased with MG Units, for five (5) years from the date of shipment from MG.
- (5) Other accessories, when purchased separately, for (1) year from the date of shipment from MG.

The "Warranty Inception Date" shall be the date of original unit installation, as per the date on the installation Startup Record; or six (6) months from date of unit shipment from MG, whichever comes first.

To make a claim under this warranty, parts must be returned to MG in Petitediac, New Brunswick, freight prepaid, no later than ninety (90) days after the date of the failure of the part. If MG determines the part to be defective and within MG's Limited Express Residential Warranty, MG shall, when such part has been either replaced or repaired, return such to a factory recognized distributor, dealer or service organization, freight prepaid. The warranty on any part repaired or replaced under warranty expires at the end of the original warranty period.

LIMITED EXPRESS RESIDENTIAL WARRANTY - LABOUR

This Limited Express Residential Labour Warranty shall cover the **labour** incurred by MG authorized service personnel in connection with the installation of a new or repaired warranty part that is covered by this Limited Express Residential Warranty only to the extent specifically set forth in the current **labour** allowance schedule "A" provided by MG's Warranty Department and only as follows:

- (1) MG Units for two (2) years from the Warranty Inception Date.
- (2) Thermostats, auxiliary electric heaters and geothermal pump modules built or sold by MG, when installed with MG Units, for two (2) years from the Warranty Inception Date.
- (3) Sealed refrigerant circuit components of MG Units (which components only include the compressor, refrigerant to air/water heat exchangers, reversing valve body and refrigerant metering device) for five (5) years from the Warranty Inception Date.

Labour costs are not covered by this Limited Express Residential Warranty to the extent they **exceed** the amount allowed under said allowance schedule, they are not specifically provided for in said allowance schedule, they are not the result of work performed by MG authorized service personnel, they are incurred in connection with a part not covered by this Limited Express Residential Warranty, or they are incurred more than the time periods set forth in this paragraph after the Warranty Inception Date.

This warranty does not cover and does not apply to:

- (1) Air filters, fuses, refrigerant, fluids, oil.
- (2) Products relocated after initial installation.
- (3) Any portion or component of any system that is not supplied by MG, regardless of the cause of the failure of such portion or component.
- (4) Products on which the unit identification tags or labels have been removed or defaced.
- (5) Products on which payment to MG, or to the owner's seller or installing contractor, is in default.
- (6) Products subjected to improper or inadequate installation, maintenance, repair, wiring or voltage conditions.
- (7) Products subjected to accident, misuse, negligence, abuse, fire, flood, lightning, unauthorized alteration, misapplication, contaminated or corrosive liquid or air supply, operation at abnormal air or liquid temperatures or flow rates, or opening of the refrigerant circuit by unqualified personnel.
- (8) Mold, fungus or bacteria damage
- (9) Corrosion or abrasion of the product.
- (10) Products supplied by others.
- (11) Products which have been operated in a manner contrary to MG's printed instructions.
- (12) Products which have insufficient performance as a result of improper system design or improper application, installation, or use of MG's products.
- (13) Electricity or fuel, or any increases or unrealized savings in same, for any reason whatsoever.

Except for the limited **labour** allowance coverage set forth above, MG is not responsible for:

- (1) The costs of fluids, refrigerant or system components **supplied by others**, or associated **labour** to repair or replace the same, which is incurred as a result of a defective part covered by MG's Limited Residential Warranty.
- (2) The costs of **labour**, refrigerant, materials or service incurred in diagnosis and removal of the defective part, or in obtaining and replacing the new or repaired part.
- (3) Transportation costs of the defective part from the installation site to MG, or of the return of that part if not covered by MG's Limited Express Residential Warranty.
- (4) The costs of normal maintenance.

This Limited Express Residential Warranty applies to MG Residential Class products manufactured on or after February 15, 2010. MG'S LIABILITY UNDER THE TERMS OF THIS LIMITED WARRANTY SHALL APPLY ONLY TO THE MG UNITS REGISTERED WITH MG THAT BEAR THE MODEL AND SERIAL NUMBERS STATED ON THE INSTALLATION START UP RECORD, AND MG SHALL NOT, IN ANY EVENT, BE LIABLE UNDER THE TERMS OF THIS LIMITED WARRANTY UNLESS THIS INSTALLATION START UP RECORD HAS BEEN ENDORSED BY OWNER & DEALER/INSTALLER AND RECEIVED BY MG LIMITED WITHIN 90 DAYS OF START UP.

Limitation: This Limited Express Residential Warranty is given in lieu of all other warranties. If, notwithstanding the disclaimers contained herein, it is determined that other warranties exist, any such express warranty, including without limitation any express warranties or any implied warranties of fitness for particular purpose and merchantability, shall be limited to the duration of the Limited Express Residential Warranty.

LIMITATION OF REMEDIES

In the event of a breach of the Limited Express Residential Warranty, MG will only be obligated at MG's option to repair the failed part or unit, or to furnish a new or rebuilt part or unit in exchange for the part or unit which has failed. If after written notice to MG's factory in Petitediac, New Brunswick of each defect, malfunction or other failure, and a reasonable number of attempts by MG to correct the defect, malfunction or other failure, and the remedy fails of its essential purpose, MG shall refund the purchase price paid to MG in exchange for the return of the sold good(s). Said refund shall be the maximum liability of MG. **THIS REMEDY IS THE SOLE AND EXCLUSIVE REMEDY OF THE BUYER OR PURCHASER AGAINST MG FOR BREACH OF CONTRACT, FOR THE BREACH OF ANY WARRANTY OR FOR MG'S NEGLIGENCE OR IN STRICT LIABILITY.**

LIMITATION OF LIABILITY

MG shall have no liability for any damages if MG's performance is delayed for any reason or is prevented to any extent by any event such as, but not limited to: any war, civil unrest, government restrictions or restraints, strikes, or work stoppages, fire, flood, accident, shortages of transportation, fuel, material, or labour, acts of God or any other reason beyond the sole control of MG. **MG EXPRESSLY DISCLAIMS AND EXCLUDES ANY LIABILITY FOR CONSEQUENTIAL OR INCIDENTAL DAMAGE IN CONTRACT, FOR BREACH OF ANY EXPRESS OR IMPLIED WARRANTY, OR IN TORT, WHETHER FOR MG'S NEGLIGENCE OR AS STRICT LIABILITY.**

OBTAINING WARRANTY PERFORMANCE

Normally, the dealer or service organization who installed the products will provide warranty performance for the owner. Should the installer be unavailable, contact any MG recognized distributor, dealer or service organization. If assistance is required in obtaining warranty performance, write or call Maritime Geothermal Ltd.

NOTE: Some states or Canadian provinces do not allow limitations on how long an implied warranty lasts, or the limitation or exclusions of consequential or incidental damages, so the foregoing exclusions and limitations may not apply to you. This warranty gives you specific legal rights, and you may also have other rights which vary from state to state and from Canadian province to Canadian province.