

Engineering Specification

W-185-H-P-*D-PP (*Non-reversing*)

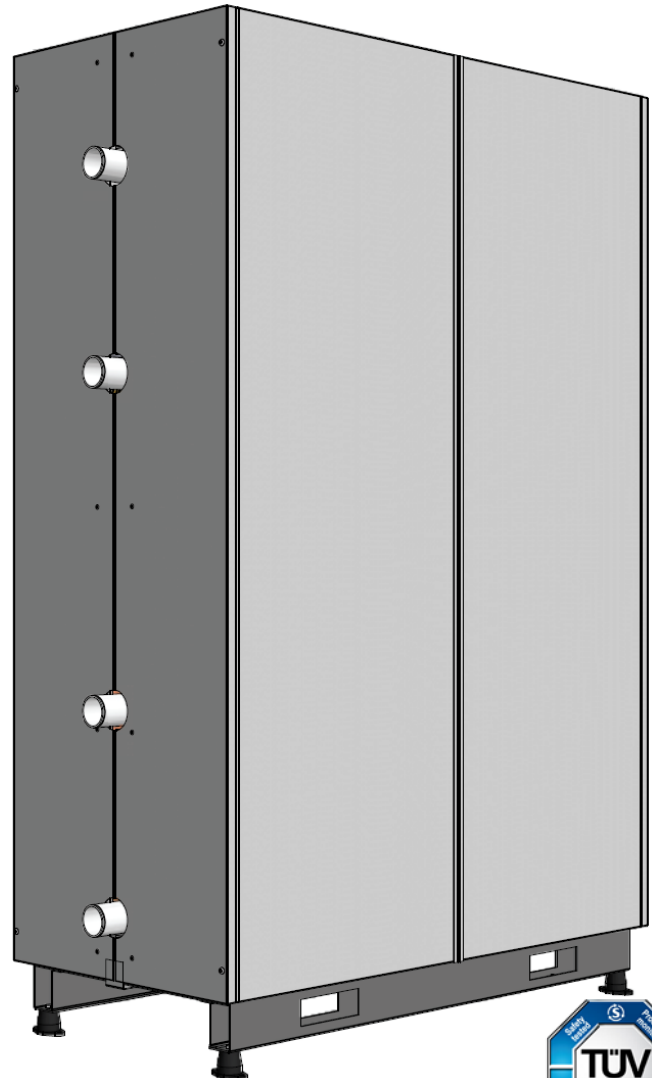
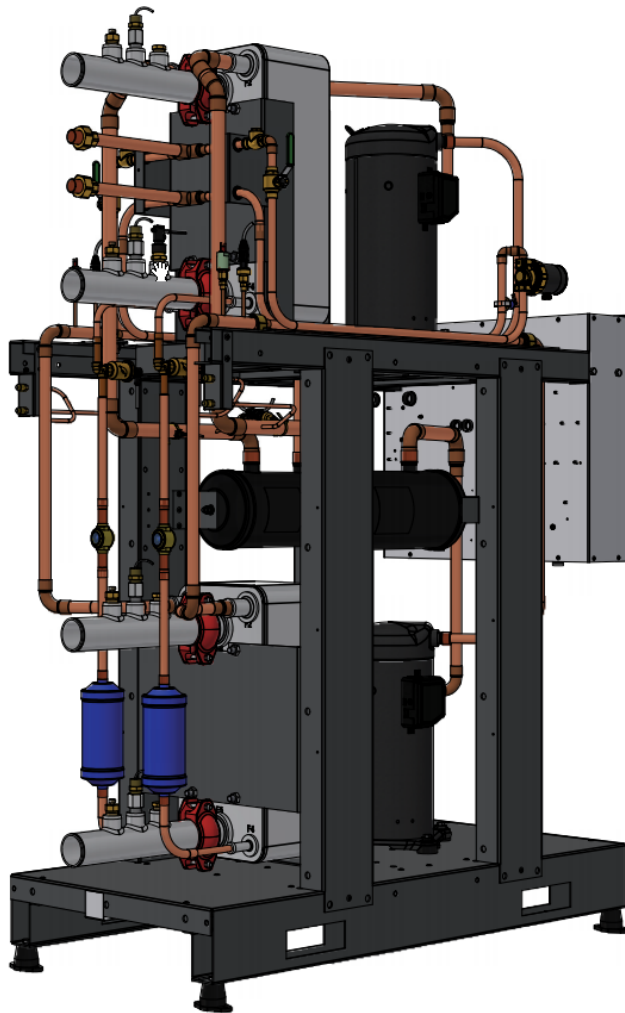
W-185-HAC-P-*D-PP (*Reversing*)

Commercial Water to Water Heat Pump

Dual Refrigeration Circuit, R410a, 60 Hz

Heating/Cooling or Ice Making/Arena Application

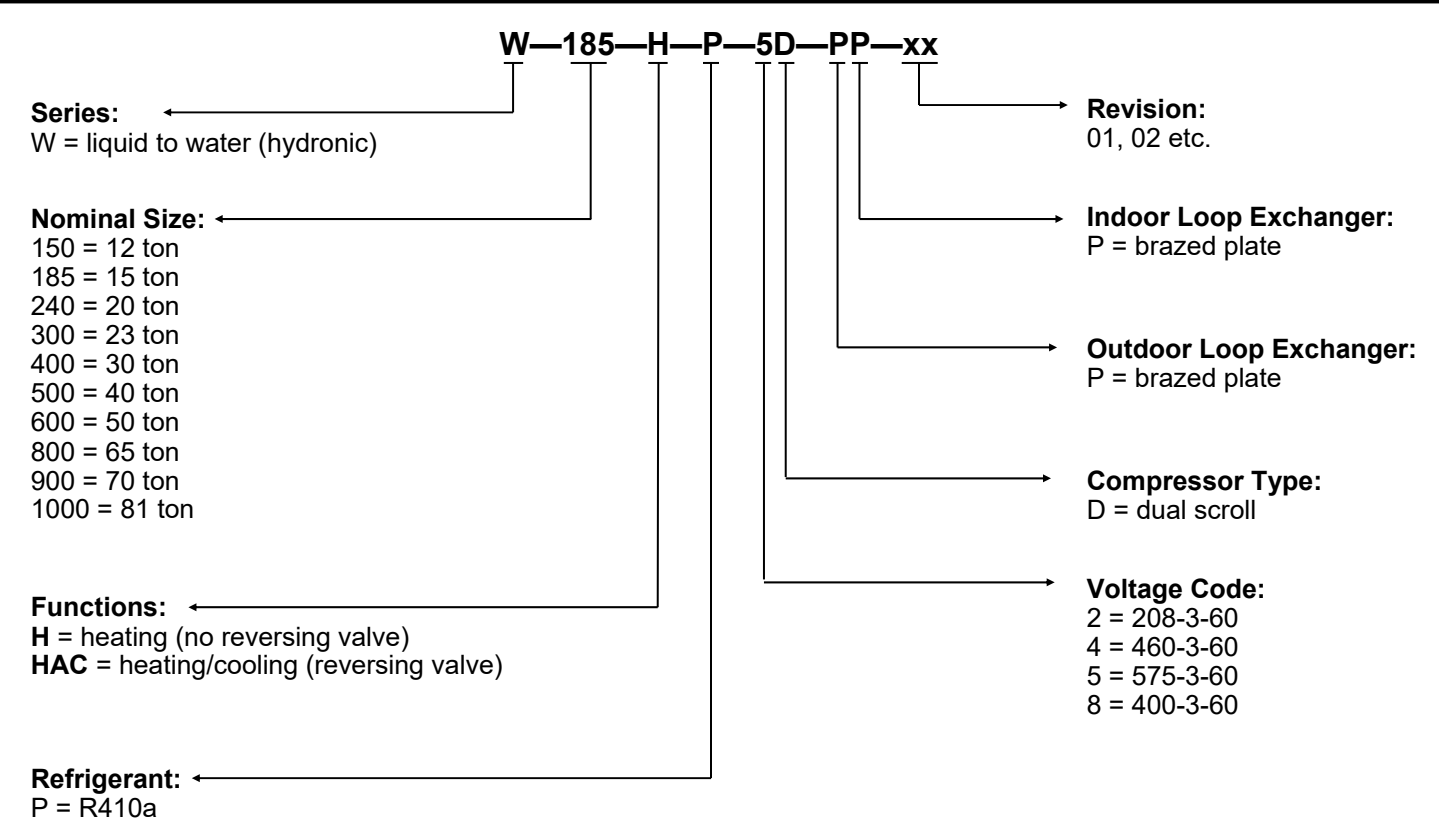
Nominal Size 17 Ton



Maritime Geothermal Ltd.
P.O. Box 2555, 170 Plantation Road
Petitcodiac, NB E4Z 6H4
(506) 756-8135

info@nordicghp.com
www.nordicghp.com
002567SPC-03

Model Nomenclature



APPLICATION TABLE											
MODEL SIZE	FUNCTION	REFRIGERANT	VOLTAGE	COMPRESSOR	OUTDOOR COIL	INDOOR COIL	REVISIONS				
W-185	H	P	2 4 5 8	D	P	P	03				
	HAC	P	2 4 5 8	D	P	P	04				
This manual applies only to the models and revisions listed in this table.											

Maritime Geothermal Ltd. has a continuous improvement policy and reserves the right to modify specification data at any time without prior notice .

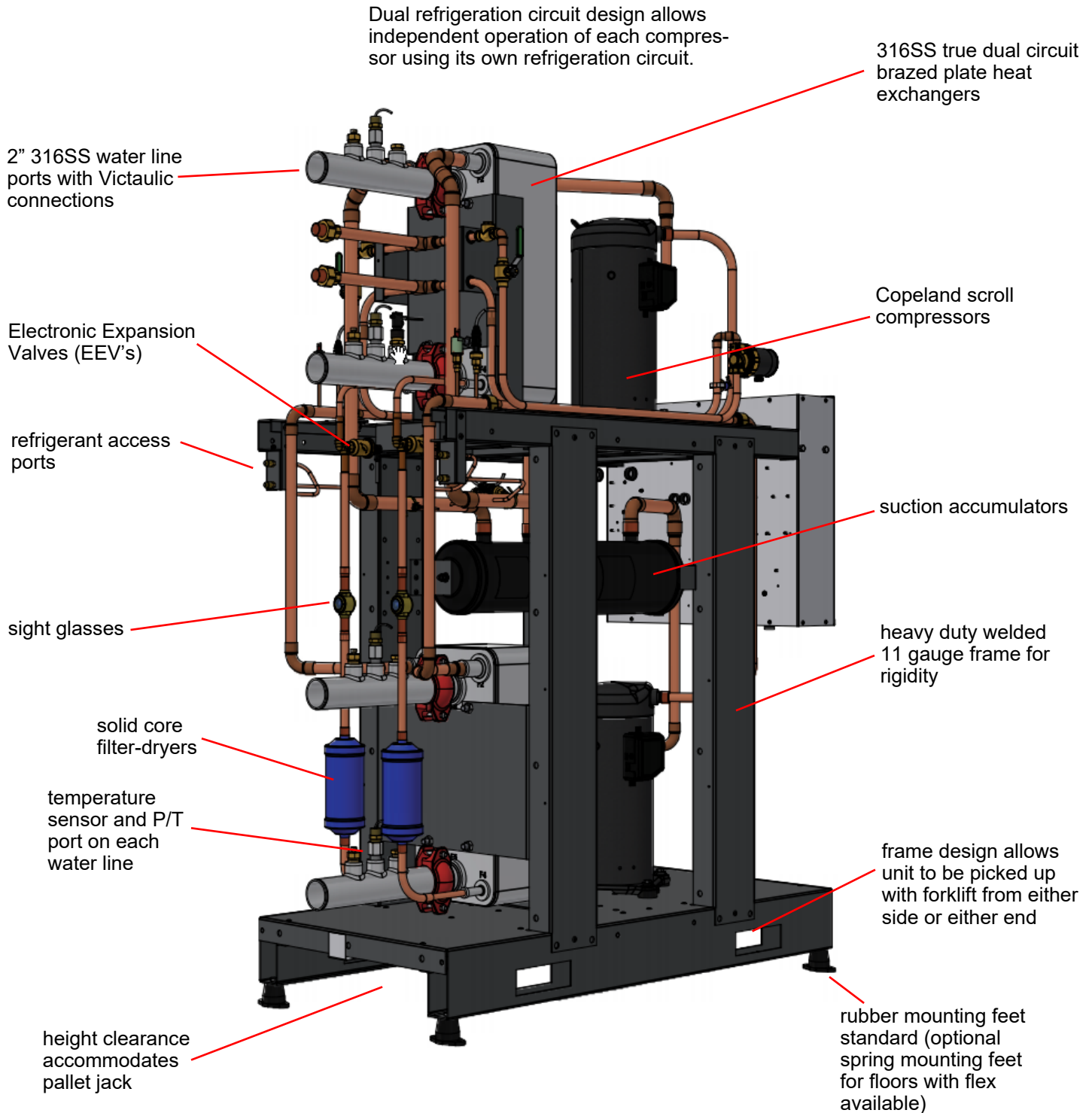
Design Features

- Suitable for space heating/cooling, heat recovery, or ice making/arena applications
- TUV listed for electrical certification
- 11 gauge heavy duty standalone frame with slots for 4-side fork lift access
- Rubber mounting feet (optional spring foot kit, below)
- Insulated heat exchangers and piping
- Dual refrigeration circuits: each circuit operates independently
- Two scroll compressors
- Suction line accumulator (each circuit)
- Liquid line solid core filter-dryer (each circuit)
- Liquid line sight glass (each circuit)
- Electronic Expansion Valves (EEVs) (each circuit)
- 4-way reversing valve on reversing **-HAC** units (each circuit)
- Refrigeration service ports for each refrigeration circuit (1/4" Schrader)
- 316 stainless steel brazed plate heat exchangers
- 316 stainless piping with 2" Victaulic connections for the outdoor and indoor loops
- 3-phase protection
- High and low pressure sensors (each circuit)
- Suction line temperature sensor (each circuit)
- Manual reset high pressure control (each circuit)
- Flow switch for outdoor loop, and also for indoor loop on reversing **-HAC** units
- Temperature sensor and P/T port on all four water lines (Outdoor In, Outdoor Out, Indoor In and Indoor Out)
- Advanced control board with BACNet interface for remote operation and data access including all sensor data and alarm conditions, PWM outputs (or 0-10VDC), configurable analog inputs (0-10VDC or 4-20mA) with on board 5VDC, 12VDC and 24VDC power supplies.
- USB port for complete data access using laptop computer and provided software; including real-time charting, data logging, and diagnostic functionality with manual override operation
- 2 x 16 LCD display for control and data access
- Random start on power up (0-2 minutes)
- Dry contacts for external pump control (24VAC 5A MAX)
- 16ga satin galvanized acoustically insulated (1" thick) enclosure with powder coat finish and six removable panels, offering complete 360 degree access for servicing

Available Accessories

- Spring foot kit, for use where floors have deflection (e.g. mezzanines)
- Tank temperature sensor(s) for standalone configuration
- 2" modulating water valve
- Factory headers for multiple units

Design Features



Suitable for open or closed loop applications.

Design Features

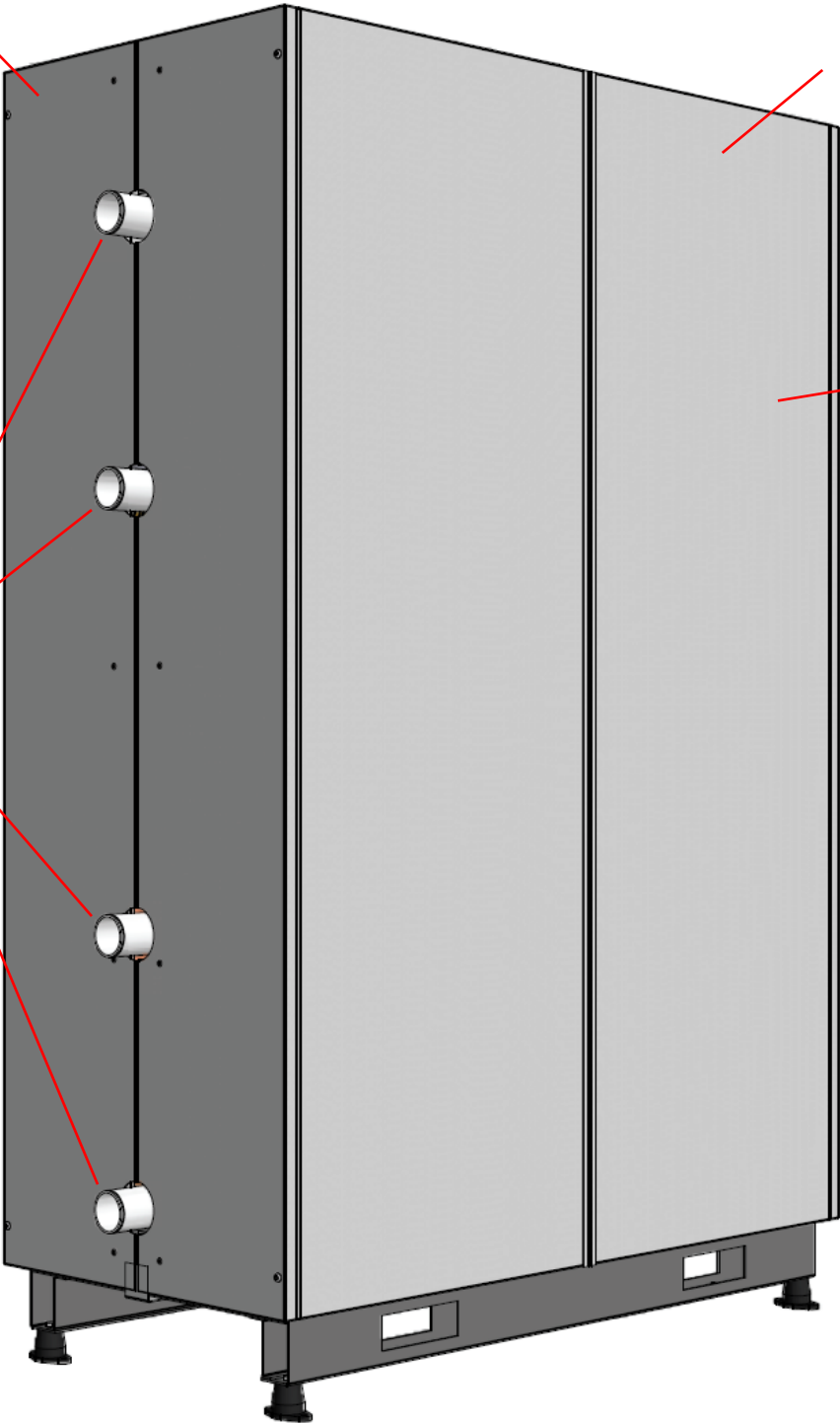
ENCLOSURE

heavy duty enclosure
constructed of 16ga satin
galvanized steel, with powder
coat finish

completely insulated
with 1" acoustic
insulation

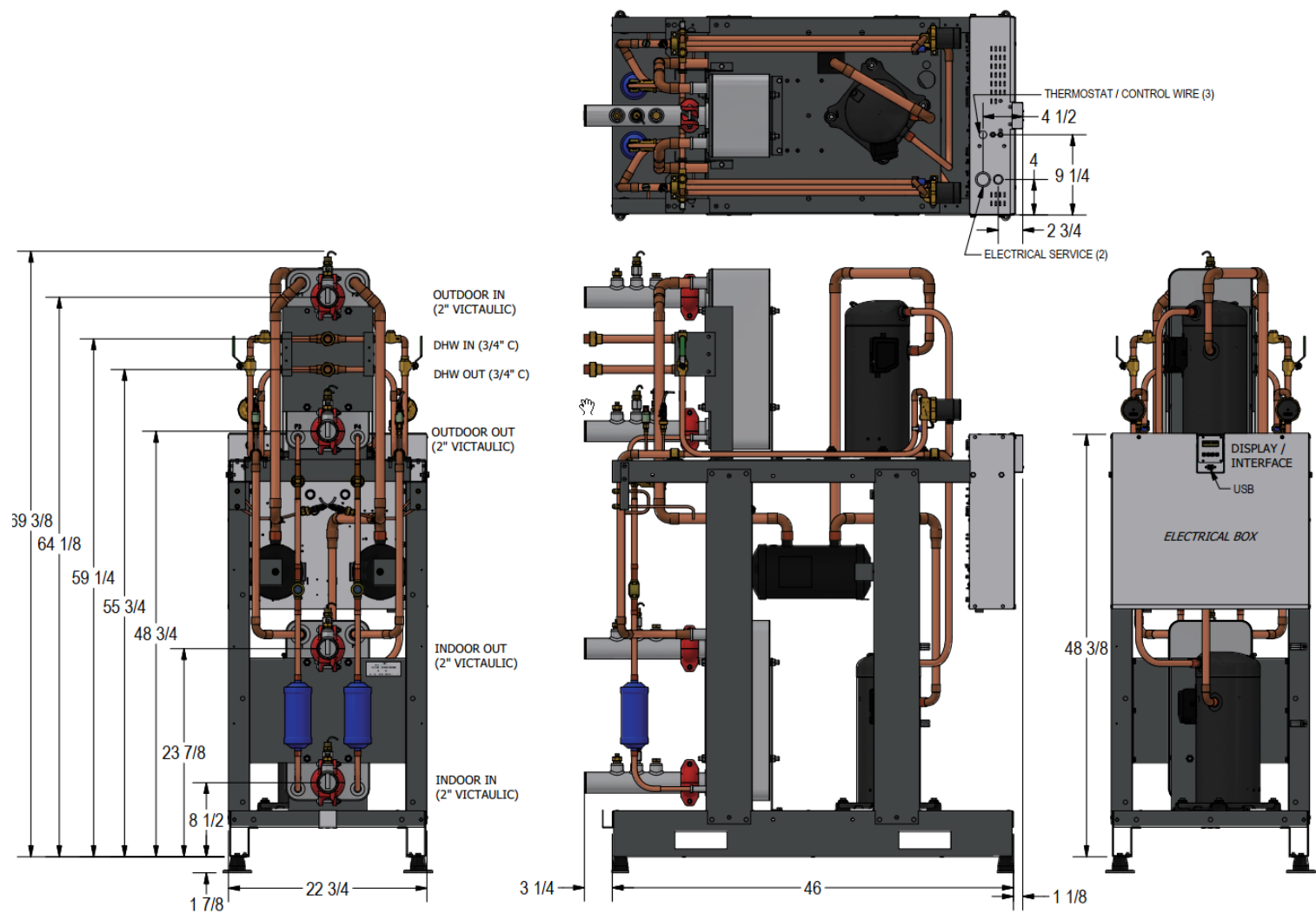
seven removeable
access panels;
side panels can be
removed from end
when multiple units
are installed side
by side (no side
access required)

2" Victaulic
connections
for loops



Dimensions

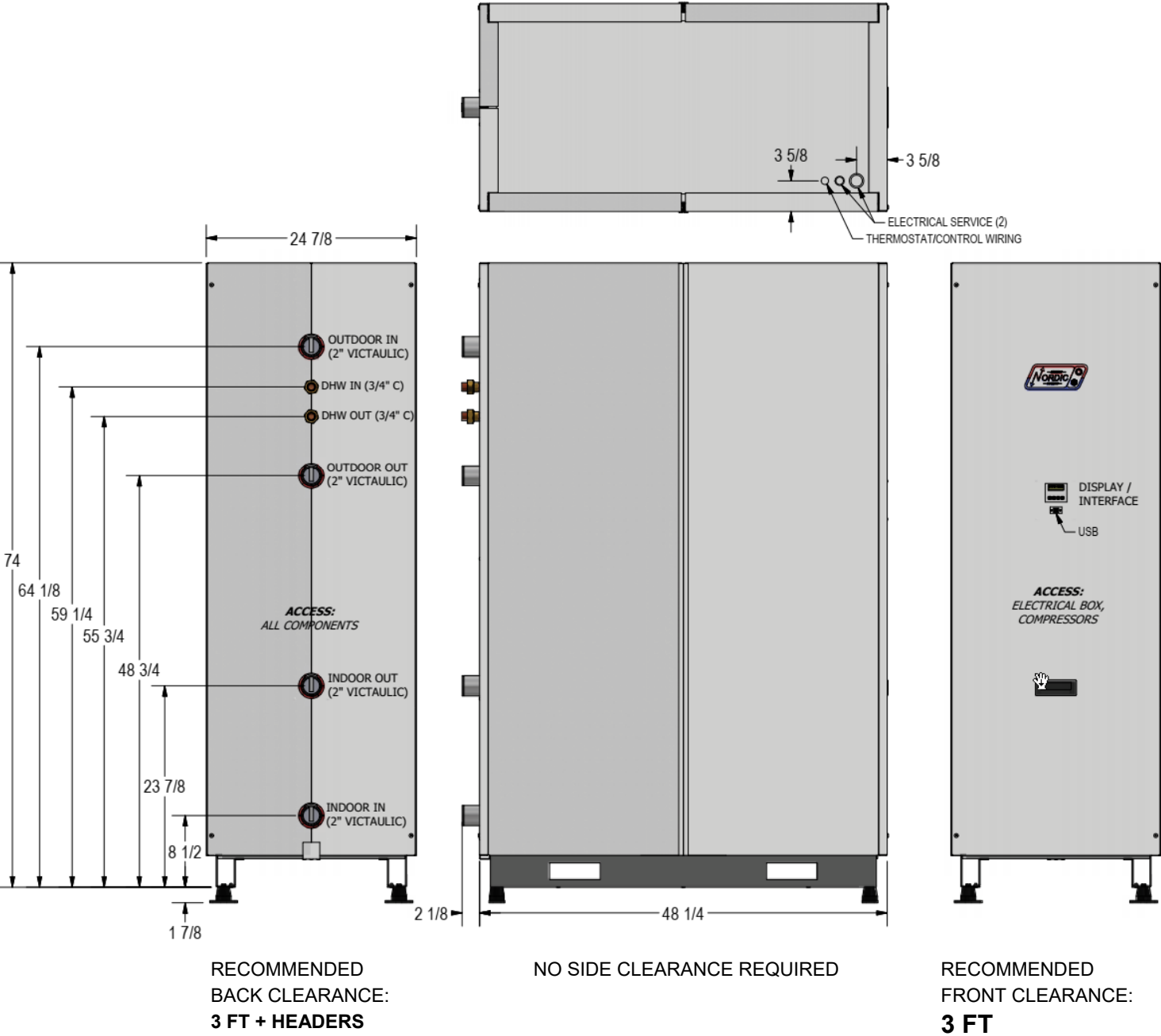
WITHOUT ENCLOSURE



All dimensions in inches.

Dimensions

WITH ENCLOSURE



All dimensions in inches.

Specifications

Electrical Specifications

Nomenclature Identifier	Power Supply			Compressors (each)		FLA	MCA	Maximum Fuse/Breaker	Minimum Wire Size
	V-ø-Hz	MIN	MAX	RLA	LRA	Amps	Amps	Amps	ga
2	208-3-60	187	229	27.6	191	55.7	62.6	80	#4-3
4	460-3-60	414	506	12.8	100	26.1	29.3	40	#8-3
5	575-3-60	518	632	9.6	78	19.7	22.1	30	#10-3
8	400-3-60	360	440	15.4	123	31.3	35.2	50	#8-3

Refrigerant Charge (Per Circuit)

MODEL	lb	kg	Oil Type
W-185	9.5	4.3	POE

- Oil capacity is marked on the compressor label.
- Refrigerant charge is subject to revision; actual charge is indicated on the unit nameplate.

Shipping Information

MODEL	WEIGHT lb. (kg)	DIMENSIONS in (cm)		
		L	W	H
W-185	1207 (549)	78 (198)	32 (81)	82 (208)

Standard Capacity Ratings - Ground Loop Heating* 60Hz

EWT 104°F (40°C) ELT 32°F (0°C)

Model	Liquid Flow (Outdoor & Indoor)		Input Energy	Capacity		COP _H
	gpm	L/s	Watts	Btu/hr	kW	W/W
W-185	48	3.0	13,308	155,400	46	3.42

* 35% Propylene Glycol by Volume Outdoor (Ground) Loop Fluid

Standard Capacity Ratings - Ground Water Heating 60Hz

EWT 104°F (40°C) ELT 50°F (10°C)

Model	Liquid Flow (Outdoor & Indoor)		Input Energy	Capacity		COP _H
	gpm	L/s	Watts	Btu/hr	kW	W/W
W-185	48	3.0	13,871	207,300	61	4.38

Standard Capacity Ratings - Ground Loop Cooling* 60Hz

EWT 53.6°F (12°C) ELT 77°F (25°C)

Model	Liquid Flow (Outdoor & Indoor)		Input Energy	Evap. Capacity		COP _c	EER
	gpm	L/s	Watts	Btu/hr	kW	W/W	Btu/hr/W
W-185	48	3.0	11,054	172,300	51	4.57	15.6

* 35% Propylene Glycol by Volume Outdoor (Ground) Loop Fluid

Standard Capacity Ratings - Ground Water Cooling 60Hz

EWT 53.6°F (12°C) ELT 59°F (15°C)

Model	Liquid Flow (Outdoor & Indoor)		Input Energy	Evap. Capacity		COP _c	EER
	gpm	L/s	Watts	Btu/hr	kW	W/W	Btu/hr/W
W-185	48	3.0	8,711	188,800	55	6.36	21.7

Specifications

Flow Rates & Volumes									
MODEL	Nominal Size (60Hz)	Recommended Liquid Flow (Outdoor & Indoor Loops)				Heat Pump's Indoor Loop Holdup Volume		Heat Pump's Outdoor Loop Holdup Volume	
		100% CAPACITY (2 COMPRESSORS)		50% CAPACITY (1 COMPRESSOR)					
	tons	gpm(US)	L/s	gpm(US)	L/s	US gal	L	US gal	L
W-185	15	48	3.0	24	1.5	2.77	10.5	2.77	10.5

Loop Pressure Drop Data			INDOOR (water 130°F)		INDOOR (water 104°F)		OUTDOOR (water 50°F)		OUTDOOR (15% methanol 32°F)		OUTDOOR (35% prop.glycol 32°F)	
	gpm	L/s	psi	kPa	psi	kPa	psi	kPa	psi	kPa	psi	kPa
W-185	32	2.0	1.0	6.9	1.0	6.9	1.1	7.6	1.2	8.3	2.0	14
	36	2.3	1.2	8.3	1.3	9.0	1.4	9.7	1.6	11	2.2	15
	40	2.5	1.5	10	1.6	11	1.7	12	1.9	13	2.4	17
	48	3.0	2.1	15	2.2	15	2.3	16	2.5	17	2.9	20
	60	3.8	3.3	23	3.4	23	3.5	24	3.6	25	3.7	26

W-SERIES Operating Temperature Limits					
Loop	Mode	Parameter	(°F)	(°C)	Note
Indoor Loop	HEATING (indoor is hot loop)	Minimum ELT/EWT	50	10	0-10VDC modulating water valve required on indoor loop at temperatures < 80°F (27°C), or manual flow reduction at startup
		Maximum LLT/LWT	130	54	
	ICE production	Maximum LLT/LWT	110	43	Maximum hot loop temperature during ICE production (specify ICE duty at order).
	COOLING (reversing HAC units only, indoor is cold loop)	Minimum LWT	40	4	Indoor loop with water only (no antifreeze).
		Minimum LLT	-->	-->	Indoor loop with antifreeze: depends on antifreeze type & %
		Maximum ELT	80	27	0-10VDC modulating water valve required on indoor loop above this temperature, or manual flow reduction at startup (contact Engineering for firmware revision of this feature)
Outdoor Loop	HEATING (outdoor is cold loop)	Minimum LWT	37	3	For water loops without antifreeze, e.g. open loop systems
		Maximum ELT/EWT	80	27	0-10VDC modulating water valve required on outdoor loop above this temperature to limit suction pressure (contact Engineering for firmware revision of this feature)
		Minimum LLT	-->	-->	Ground loop system: depends on antifreeze type and % settings.
	ICE production	Minimum LLT	0	-17	Minimum cold loop temperature during ice production (specify ICE duty at order).
	COOLING (reversing HAC units only, outdoor is hot loop)	Minimum ELT/EWT	50	10	0-10VDC modulating water valve required on outdoor loop at temperatures < 80°F (27°C) to keep head pressure up
		Maximum LLT/LWT	130	54	

ELT: Entering Liquid Temperature (implies antifreeze present)
 LLT: Leaving Liquid Temperature (implies antifreeze present)
 EWT: Entering Water Temperature
 LWT: Leaving Water Temperature

Values in these tables are for rated liquid and water flows.

Performance Tables - W-Series (Heating/Cooling)

W-185-H-P-*D-PP** R410a, 60 Hz, 2 x ZP91KCE-TFD (460-3-60)

*Compressor current is for 460-3-60.
Multiply by 2.2 for 208-3-60.
Multiply by 1.15 for 400-3-60.
Multiply by 0.8 for 575-3-60.

EVAPORATOR LOOP <i>(35% Propylene Glycol)</i>							ELECTRICAL		CONDENSER LOOP <i>(Water)</i>						
HEATING	ELT (°F)	Evap. Temp.	Flow (gpm)	LLT (°F)	Delta T (°F)	Heat Abs. (Btu/hr)	Compressor Current (A)*	Input Power (W)	EWT (°F)	Cond. Temp.	Flow (gpm)	LWT (°F)	Delta T (°F)	Heating (Btu/hr)	COP _H
	25	15	48	21	4.2	94,300	20.5	13,085	104	115	48	110	5.8	138,200	3.10
	30	20	48	25	4.8	105,700	20.7	13,244		115	48	110	6.3	150,200	3.32
	35	24	48	30	5.3	118,100	20.9	13,404		116	48	111	6.8	163,200	3.57
	40	29	48	34	5.9	131,400	21.1	13,562		116	48	111	7.4	177,000	3.82
	45	34	48	39	6.5	145,300	21.3	13,717		117	48	112	8.0	191,400	4.09
	50	38	48	43	7.2	160,600	21.5	13,871		117	48	113	8.6	207,300	4.38
	55	43	48	47	8.0	177,100	21.7	14,021		118	48	113	9.4	224,300	4.69
	60	48	48	51	8.7	194,400	21.8	14,164		118	48	114	10.1	242,100	5.01
	25	15	48	21	3.8	85,100	21.7	14,298	114	124	48	120	5.6	133,200	2.73
	30	20	48	26	4.4	96,900	22.0	14,460	114	124	48		6.1	145,500	2.95
	35	25	48	30	4.9	109,400	22.2	14,621	113	124	48		6.6	158,600	3.18
	40	29	48	35	5.5	122,600	22.4	14,797	113	125	48		7.2	172,400	3.41
	45	34	48	39	6.2	136,900	22.7	14,954	112	125	48		7.8	187,300	3.67
	50	39	48	43	6.8	152,200	22.9	15,107	112	125	48		8.5	203,100	3.94
	55	43	48	47	7.6	168,700	23.1	15,256	111	125	48		9.2	220,100	4.23
60	48	48	52	8.4	186,400	23.2	15,401	110	125	48	9.9		238,300	4.53	

		EVAPORATOR LOOP (Water)					ELECTRICAL		CONDENSER LOOP (35% Propylene Glycol)						
COOLING	ELT (°F)	Evap. Temp.	Flow (gpm)	LLT (°F)	Delta T (°F)	Cooling (Btu/hr)	Compressor Current (A)*	Input Power (W)	EWT (°F)	Cond. Temp.	Flow (gpm)	LWT (°F)	Delta T (°F)	Heat Rej. (Btu/hr)	EER
	54	36	48	46	8.0	193,000	17.1	8,257	55	78	48	65	9.9	220,000	23.4
		36	48	46	7.8	187,800	17.6	8,825	60	83	48	70	9.7	216,700	21.3
		37	48	46	7.6	183,100	18.2	9,419	65	88	48	75	9.6	214,100	19.4
		37	48	46	7.4	178,500	18.9	10,065	70	94	48	80	9.5	211,700	17.7
		38	48	46	7.3	174,000	19.6	10,756	75	99	48	84	9.4	209,500	16.2
		38	48	47	7.1	169,700	20.3	11,500	80	104	48	89	9.3	207,800	14.8
		39	48	47	6.9	165,400	21.1	12,286	85	109	48	94	9.3	206,100	13.5
39	48	47	6.7	160,900	22.0	13,150	90	115	48	99	9.2	204,600	12.2		

METRIC

		EVAPORATOR LOOP (35% Propylene Glycol)					ELECTRICAL		CONDENSER LOOP (Water)							
		ELT (°C)	Evap. Temp.	Flow (L/s)	LLT (°C)	Delta T (°C)	Heat Abs. (kW)	Compressor Current (A)*	Input Power (W)	EWT (°C)	Cond. Temp.	Flow (L/s)	LWT (°C)	Delta T (°C)	Heating (kW)	COP _H
HEATING (METRIC)		-3.9	-9.4	3.0	-6.2	2.3	27.60	20.5	13,085	40	45.8	3.0	43.2	3.2	40.50	3.10
		-1.1	-6.8	3.0	-3.8	2.7	30.98	20.7	13,244		46.1	3.0	43.5	3.5	44.02	3.32
		1.7	-4.2	3.0	-1.2	2.9	34.61	20.9	13,404		46.4	3.0	43.8	3.8	47.83	3.57
		4.4	-1.6	3.0	1.1	3.3	38.51	21.1	13,562		46.7	3.0	44.1	4.1	51.87	3.82
		7.2	0.9	3.0	3.6	3.6	42.58	21.3	13,717		46.9	3.0	44.4	4.4	56.09	4.09
		10.0	3.6	3.0	6.0	4.0	47.07	21.5	13,871		47.2	3.0	44.8	4.8	60.75	4.38
		12.8	6.2	3.0	8.4	4.4	51.90	21.7	14,021		47.5	3.0	45.2	5.2	65.74	4.69
		15.6	8.7	3.0	10.8	4.8	56.97	21.8	14,164		47.8	3.0	45.6	5.6	70.95	5.01
		-3.9	-9.3	3.0	-6.0	2.1	24.90	21.7	14,298	45.8	51.0	3.0	49	3.1	39.04	2.73
		-1.1	-6.7	3.0	-3.5	2.4	28.40	22.0	14,460	45.5	51.1	3.0		3.4	42.64	2.95
		1.7	-4.1	3.0	-1.0	2.7	32.06	22.2	14,621	45.2	51.2	3.0		3.7	46.48	3.18
		4.4	-1.5	3.0	1.3	3.1	35.93	22.4	14,797	44.9	51.4	3.0		4.0	50.53	3.41
		7.2	1.1	3.0	3.8	3.4	40.12	22.7	14,954	44.6	51.5	3.0		4.3	54.89	3.67
		10.0	3.7	3.0	6.2	3.8	44.61	22.9	15,107	44.2	51.6	3.0		4.7	59.52	3.94
		12.8	6.3	3.0	8.6	4.2	49.44	23.1	15,256	43.8	51.7	3.0		5.1	64.50	4.23
		15.6	8.9	3.0	10.9	4.7	54.63	23.2	15,401	43.4	51.8	3.0		5.5	69.84	4.53

COOLING (METRIC)	EVAPORATOR LOOP (Water)						ELECTRICAL		CONDENSER LOOP (35% Propylene Glycol)						
	ELT (°C)	Evap. Temp.	Flow (L/s)	LLT (°C)	Delta T (°C)	Cooling (kW)	Compressor Current (A)*	Input Power (W)	EWT (°C)	Cond. Temp.	Flow (L/s)	LWT (°C)	Delta T (°C)	Heat Rej. (kW)	COP _c
	12	2.1	3.0	7.6	4.4	56.56	17.1	8,257	12.8	25.4	3.0	18.3	5.5	64.48	6.86
		2.4	3.0	7.7	4.3	55.04	17.6	8,825	15.6	28.4	3.0	21.0	5.4	63.51	6.24
		2.7	3.0	7.8	4.2	53.66	18.2	9,419	18.3	31.3	3.0	23.6	5.3	62.75	5.69
		2.9	3.0	7.9	4.1	52.31	18.9	10,065	21.1	34.2	3.0	26.4	5.3	62.04	5.19
		3.2	3.0	7.9	4.1	50.99	19.6	10,756	23.9	37.2	3.0	29.1	5.2	61.40	4.75
		3.5	3.0	8.1	3.9	49.73	20.3	11,500	26.7	40.1	3.0	31.9	5.2	60.90	4.34
		3.8	3.0	8.2	3.8	48.47	21.1	12,286	29.4	43.0	3.0	34.6	5.2	60.40	3.96
4.1		3.0	8.3	3.7	47.16	22.0	13,150	32.2	45.9	3.0	37.3	5.1	59.96	3.58	

Performance Tables - W-Series (Ice Making/Arena Application)

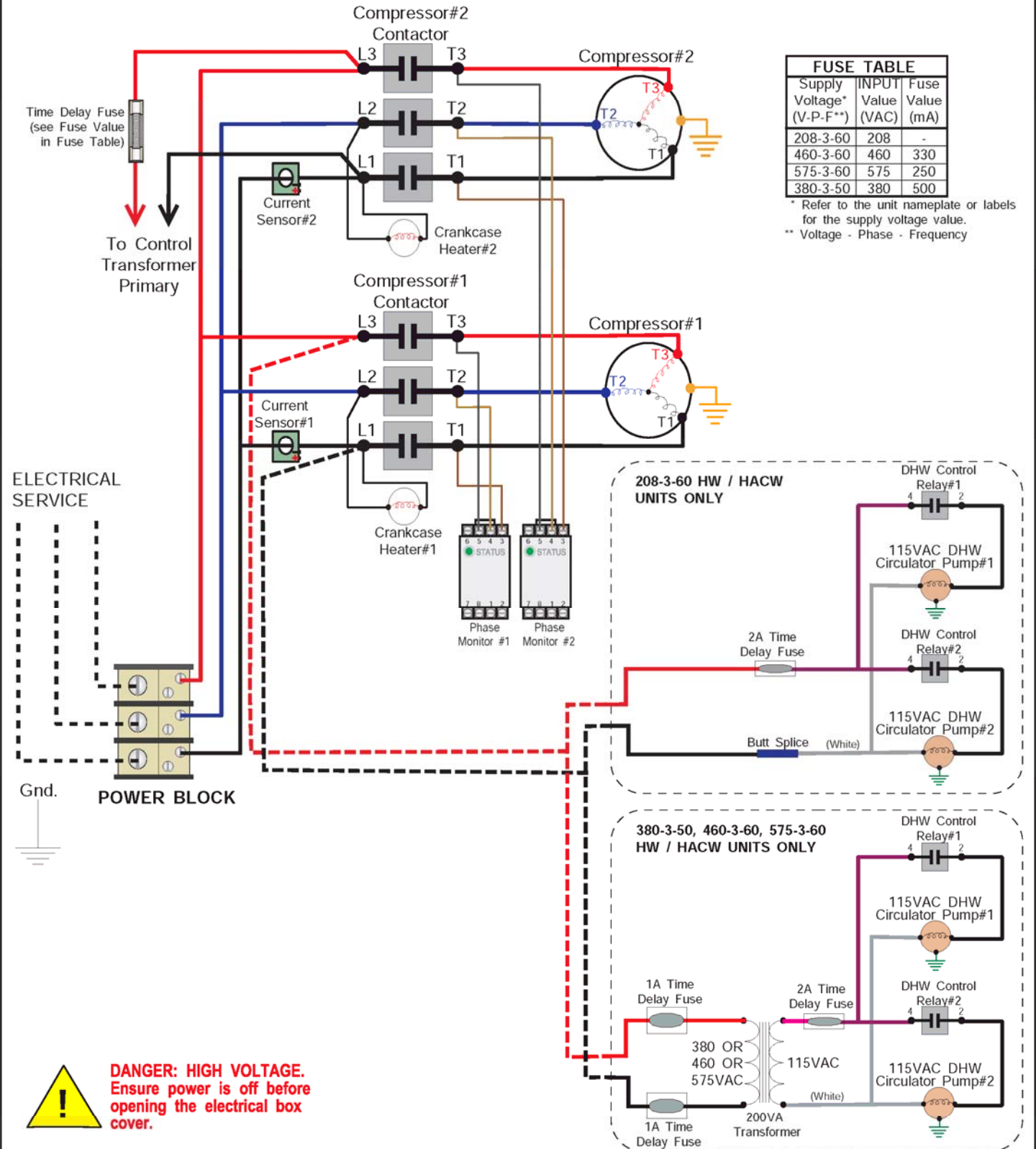
W-185-H-P-*D-PP** R410a, 60 Hz, 2 x ZP91KCE-TFD (460-3-60)

EVAPORATOR LOOP (50% Propylene Glycol)									ELECTRICAL		CONDENSER LOOP (Water)						
ICE	ELT (°F)	Evap. Temp.	Flow (gpm)	LLT (°F)	Delta T (°F)	Ice Cooling (Btu/hr)	COP _c	EER	Compressor Current (A)*	Input Power (W)	EWT (°F)	Cond. Temp.	Flow (gpm)	LWT (°F)	Delta T (°F)	Heating (Btu/hr)	COP _h
	5	-3	48	2	3.2	65,900	1.91	6.5	16.3	10,118	85	94	48	89	4.1	97,700	2.83
	10	2	48	7	3.5	73,700	2.10	7.2	16.7	10,291		95	48	89	4.4	106,400	3.03
	15	6	48	11	3.9	81,900	2.29	7.8	17.1	10,470		95	48	90	4.8	115,600	3.24
	20	10	48	16	4.3	90,700	2.49	8.5	17.6	10,655		96	48	90	5.2	125,400	3.45
	25	15	48	20	4.8	100,100	2.71	9.2	18.0	10,832		96	48	91	5.7	135,700	3.67
	30	19	48	25	5.3	110,100	2.93	10.0	18.5	11,024		96	48	91	6.1	146,700	3.90
	35	24	48	29	5.8	120,800	3.16	10.8	18.9	11,220		97	48	92	6.6	158,500	4.14
	40	28	48	34	6.3	132,200	3.39	11.6	19.4	11,418		97	48	92	7.1	170,900	4.39

METRIC

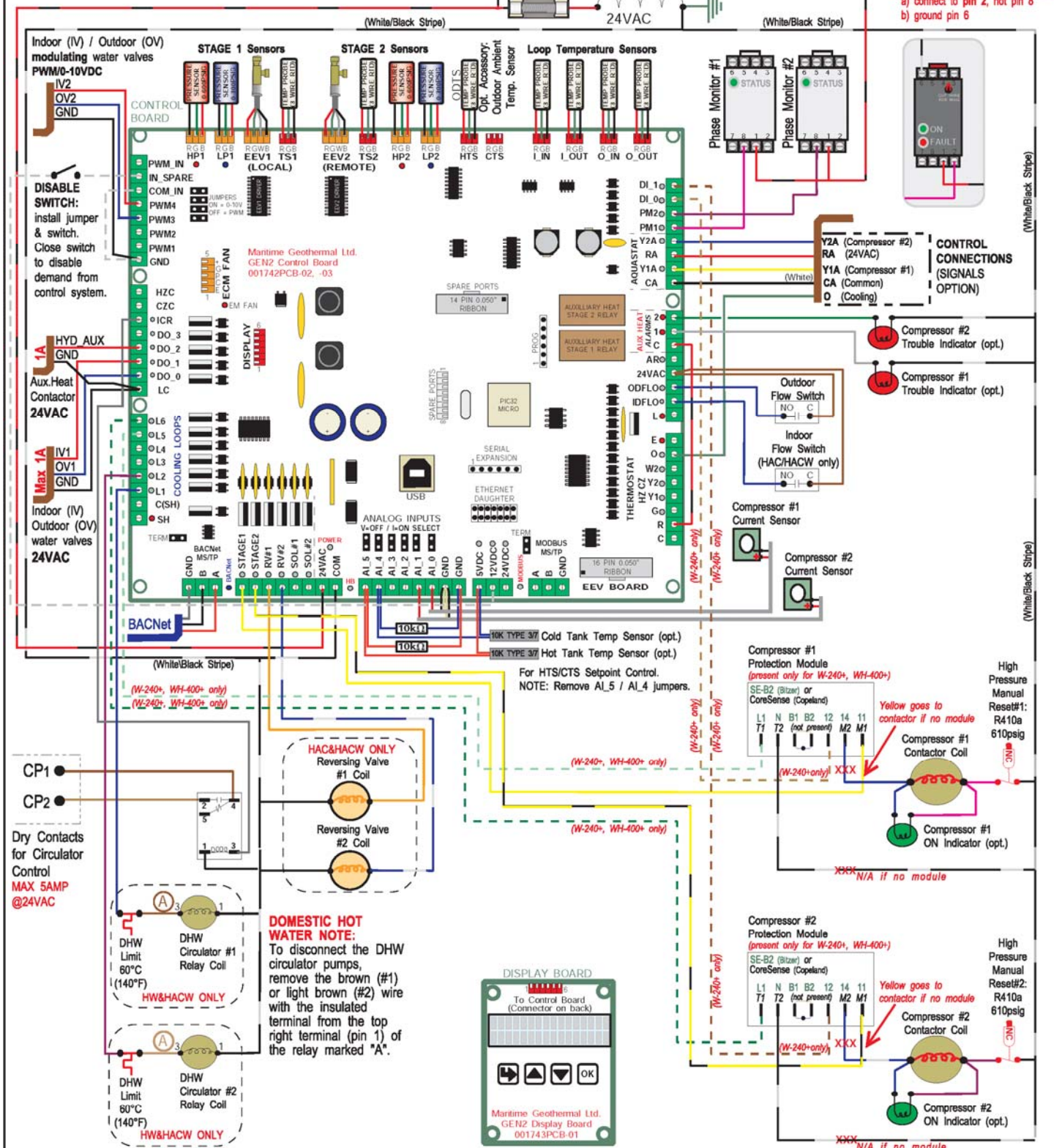
EVAPORATOR LOOP (50% Propylene Glycol)									ELECTRICAL		CONDENSER LOOP (Water)						
ICE	ELT (°C)	Evap. Temp.	Flow (L/s)	LLT (°C)	Delta T (°C)	Ice Cooling (kW)	COP _c	EER	Compressor Current (A)*	Input Power (W)	EWT (°C)	Cond. Temp.	Flow (L/s)	LWT (°C)	Delta T (°C)	Heating (kW)	COP _h
	-15.0	-19.4	3.0	-16.8	1.8	19.3	1.91	6.5	16.3	10,118	29.4	34.7	3.0	31.7	2.3	28.6	2.83
	-12.2	-16.9	3.0	-14.1	1.9	21.6	2.10	7.2	16.7	10,291		34.9	3.0	31.8	2.4	31.2	3.03
	-9.4	-14.5	3.0	-11.6	2.2	24.0	2.29	7.8	17.1	10,470		35.1	3.0	32.1	2.7	33.9	3.24
	-6.7	-12.1	3.0	-9.1	2.4	26.6	2.49	8.5	17.6	10,655		35.3	3.0	32.3	2.9	36.8	3.45
	-3.9	-9.6	3.0	-6.6	2.7	29.3	2.71	9.2	18.0	10,832		35.5	3.0	32.6	3.2	39.8	3.67
	-1.1	-7.2	3.0	-4.0	2.9	32.3	2.93	10.0	18.5	11,024		35.7	3.0	32.8	3.4	43.0	3.90
	1.7	-4.7	3.0	-1.5	3.2	35.4	3.16	10.8	18.9	11,220		35.9	3.0	33.1	3.7	46.5	4.14
	4.4	-2.3	3.0	0.9	3.5	38.7	3.39	11.6	19.4	11,418		36.2	3.0	33.3	3.9	50.1	4.39

* Compressor current is for 460-3-60; multiply by 2.2 for 208-3-60, by 0.8 for 575-3-60.



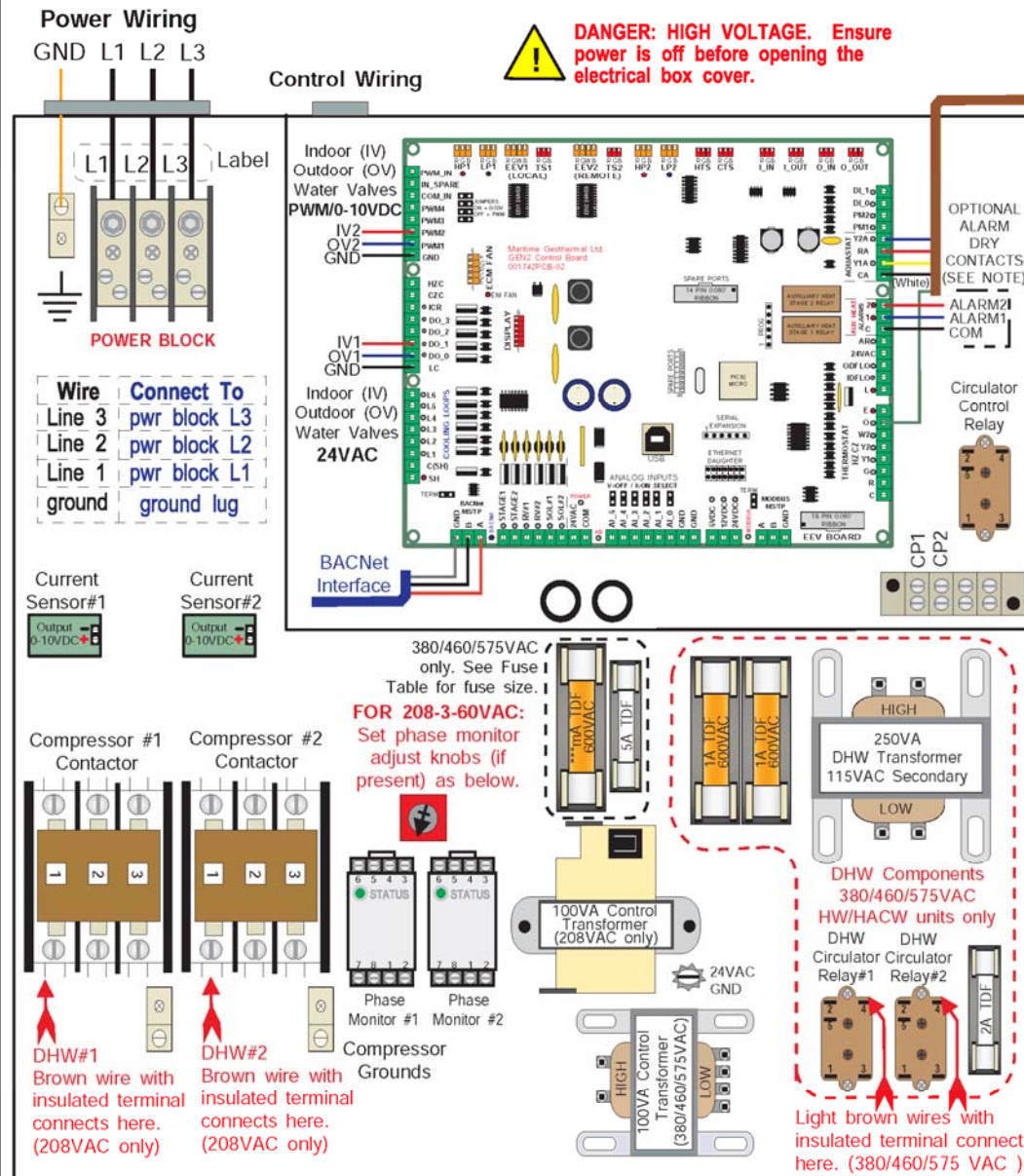
02	ISSUE 03	D. RHEAULT	D. RHEAULT	24-Jun-2022	Drawn By Chris Geddes	Date 18-Oct-2012	MARITIME GEOTHERMAL LTD. 170 Plantation Rd. Petitcodiac, NB E4Z 6H4
02	ISSUE 02	D. RHEAULT	D. RHEAULT	15-Mar-2022	Checked By Chris Geddes	Date 18-Oct-2012	
02	Reformatted	D. RHEAULT	D. RHEAULT	01-Nov-2017	Approved By Chris Geddes (ENG)	Date 18-Oct-2012	
01	Initial Release	C. GEDDES	C. GEDDES	18-Oct-2012	Approved By (MFG)	Date	
REV	ECO #	IMPL BY	APVD BY	DATE	Approved By	Date	Drawing Name W/WH-150 to W/WH-1000-H***.D-PP High Voltage Schematic Diagram Size A Drawing Number 001717SCH Drawing Rev 02(13) SHEET 1 of 1

W/WH-150 to 1000 Schematic Diagram



04	ISSUE 03	D. RHEAULT	D. RHEAULT	24-Jun-2022	Drawn By Chris Geddes	Date 18-Oct-2012	<div>MARITIME GEOTHERMAL LTD.</div> <div>170 Plantation Rd. Pettitcodiac, NB E4Z 6H4</div>				
04	ISSUE 02	D. RHEAULT	D. RHEAULT	15-Mar-2022	Checked By Chris Geddes	Date 18-Oct-2012					
04	000280	D. RHEAULT	D. RHEAULT	1-Dec-2020	Approved By Chris Geddes (ENG)	Date 18-Oct-2012	Drawing Name				
03	Reformatted	D. RHEAULT	D. RHEAULT	12-Nov-2019	Approved By (MFG)	Date	W/WH-150 to W/WH-1000-H***-**-D-PP Schematic Diagram				
02	Reformatted	D. RHEAULT	D. RHEAULT	01-Nov-2017	Approved By	Date	Size A	Drawing Number 001718SCH	Drawing Rev 04(i3)	SHEET 1 of 1	
REV	ECO #	IMPL BY	APVD BY	DATE	Approved By	Date					

W/WH-150 to 1000 Electrical Box Diagram



DANGER: HIGH VOLTAGE. Ensure power is off before opening the electrical box cover.

FUSE TABLE ***	
Supply Voltage	Fuse Value*
208-3-60	-----
460-3-60	330mA
575-3-60	250mA
380-3-50	500mA

*Value is marked in electrical box.

CONTROL CONNECTIONS (HARDWIRED OPTION)

Y2A(Compressor #2) RA(24VAC)
Y1A(Compressor #1) CA(Common)
O(Cooling)

OPTIONAL ALARM DRY CONTACTS (SEE NOTE)

ALARM2 ALARM1 COM

Circulator Control Relay

Use PC App or LCD menus to select 1 of 3 Control Methods:

1. BACnet
2. Hardwired (24VAC signals)
3. Setpoint Control (internal)

1. BACnet (MS/TP RS-485)

Use twisted pair shielded-conductor cable.

- A - Communication
B - Communication
GND - Ground

SYSTEM_Y1A: Stage 1 (compr.1)
SYSTEM_Y2A: Stage 2 (compr.2)
SYSTEM_O: Htg/Cooling Mode (active in cooling)

2. Hardwired (24VAC)

Use an 18-4 or 18-5 cable.

- C - 24VAC Common
R - 24VAC Hot
Y1A - Stage 1 (Compressor 1)
Y2A - Stage 2 (Compressor 2)
O - Heating/Cooling Mode (active for cooling mode)

A dry contact from "R" to "Y1A" will start compressor #1.

A dry contact from "R" to "Y2A" will start compressor #2.

A dry contact from "R" to "O" will activate cooling mode (for both compressors).

3. Setpoint Control

Unit will be controlled by internal water line temperature sensors. See manual for setup instructions.

DHW NOTE: If the heat pump is to be operated without the hot water circulators connected to the water tank and flooded with water, remove the brown (or light brown) wire with the insulated terminal from the location(s) shown in the diagram above. **The pumps are water lubricated and must not be run dry.**

IMPORTANT NOTES:

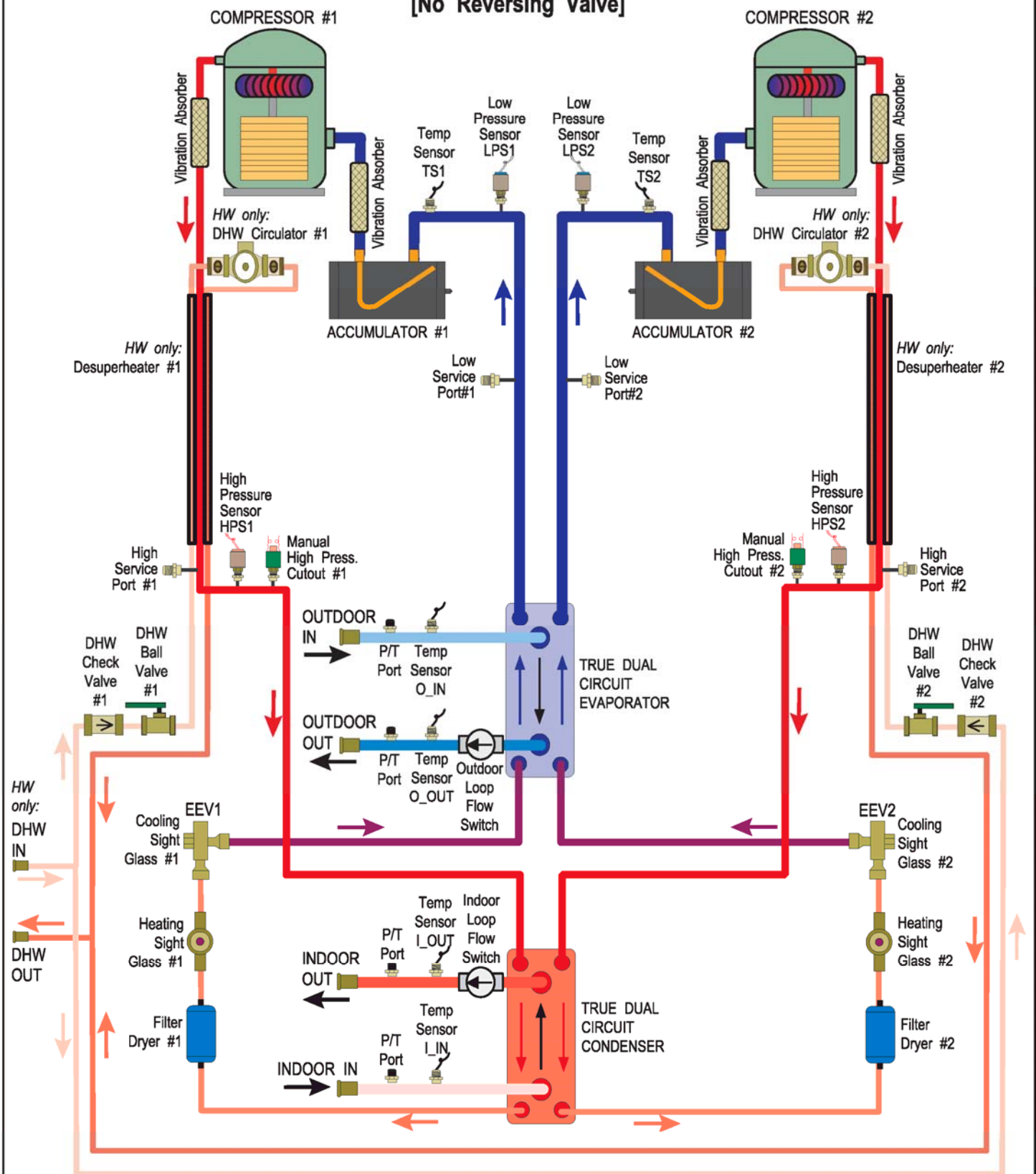
- **3 PHASE SCROLL COMPRESSORS** must rotate in the proper direction. After the initial connection, if the phase protection module(s) indicate a fault on power up, turn the power off and reverse the L1 and L2 supply leads. Turn the power on and clear the fault(s).

- **IMPORTANT:** Ensure sufficient antifreeze concentration is used and correctly set in control board via the PC App, so that the correct low pressure cutout value is implemented to prevent freezing conditions. Failure to do so could cause the heat exchanger to freeze and rupture, voiding the warranty.

- Stages Y1A & Y2A are completely independent (unlike with residential "Ultratech" compressors). Each may be used at any time.
- Anti-short cycle timer of 5 minutes exists for each compressor.
- Alarm1 and Alarm2 signals are dry contacts (NO). Connect the signal source to COM. Alarm1 is for stage 1 (Y1A) and Alarm2 is for stage 2 (Y2A). **MAX 1amp @ 24VAC**
- CP1 and CP2 are a dry contact that can be used to turn on circulator pumps when either compressor starts. In Setpoint Control mode, it is indoor circulators only (sampling). **MAX 5amps @ 24VAC**
- **Water Valve:** 24VAC is present across OV1/IV1 and GND to power an external ON/OFF water valve when either compressor starts. Modulating water valves can be connected between OV2/IV2 and GND. **MAX 1amp @ 24VAC**

02	ISSUE 03	D. RHEAULT	D. RHEAULT	24-Jun-2022	Drawn By Chris Geddes	Date 18-Oct-2012	MARITIME GEOTHERMAL LTD. 170 Plantation Rd. Petitcodiac, NB E4Z 6H4
02	ISSUE 02	D. RHEAULT	D. RHEAULT	15-Mar-2022	Checked By Chris Geddes	Date 18-Oct-2012	
02	Reformatted	D. RHEAULT	D. RHEAULT	01-Nov-2017	Approved By Chris Geddes (ENG)	Date 18-Oct-2012	
01	Initial Release	C. GEDDES	C. GEDDES	18-Oct-2012	Approved By (MFG)	Date	
REV	ECO #	IMPL BY	APVD BY	DATE	Approved By	Date	Drawing Name W/WH-150 to W/WH-1000-H***-D-PP Electrical Box Diagram Size A Drawing Number 001719ELB Drawing Rev 02(i3) SHEET 1 of 1

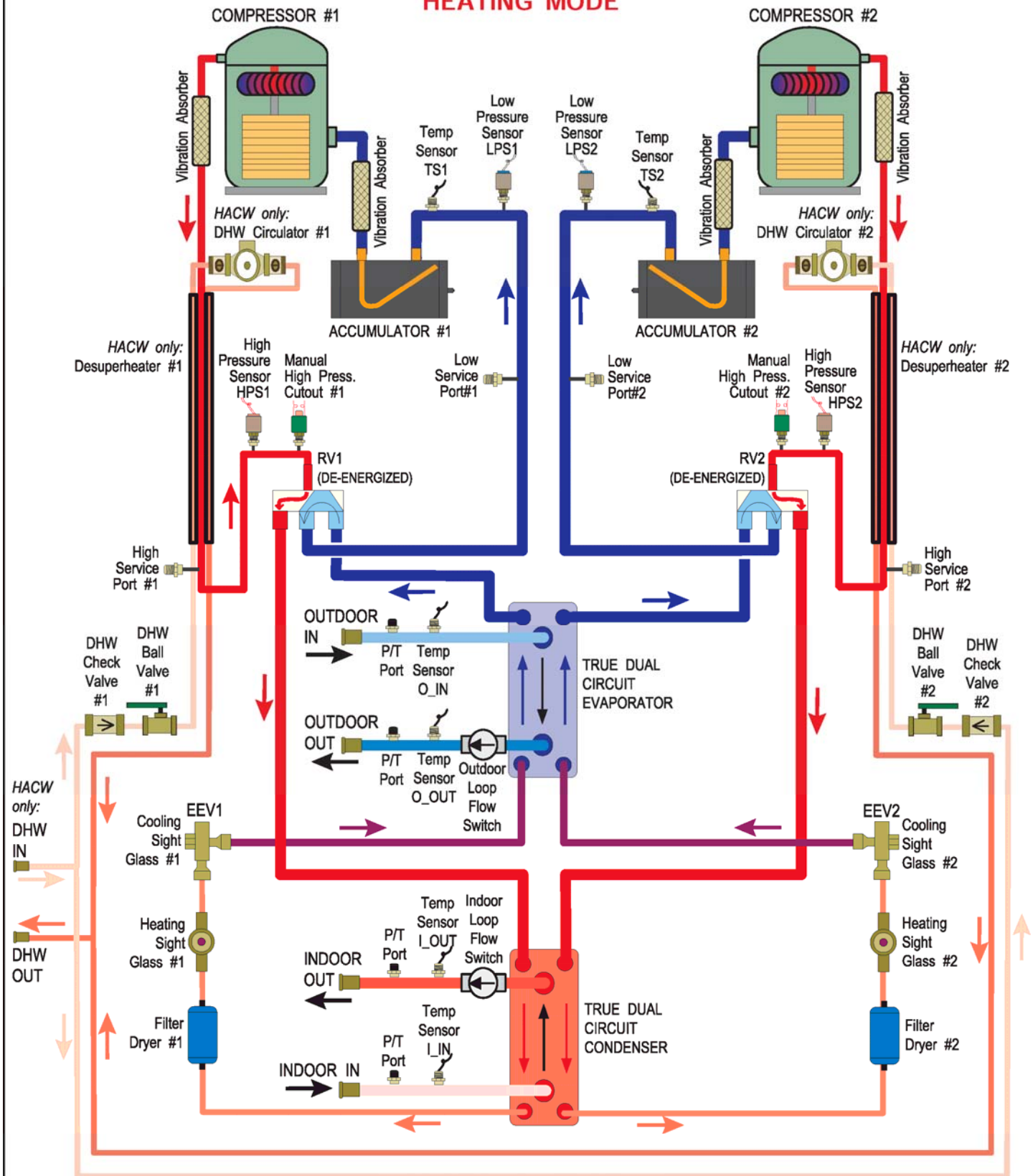
W/WH-150 to 1000-H/HW Refrigeration Circuit [No Reversing Valve]



					Drawn By Chris Geddes	Date 23-Oct-2012	MARITIME GEOTHERMAL LTD.			170 Plantation Rd. Petitcodiac, NB E4Z 6H4	
					Checked By Chris Geddes	Date 23-Oct-2012					
01(i2)	ISSUE 02	D. RHEAULT	D. RHEAULT	1-Jun-2022	Approved By Chris Geddes	(ENG) Date 23-Oct-2012	Drawing Name W/WH-150 to 1000-H(W) Refrigeration Circuit Diagram				
01	Initial Release	C. GEDDES	C. GEDDES	23-Oct-2012	Approved By (MFG)	Date	Size A	Drawing Number 001720RCD	Drawing Rev 01(i2)	SHEET 1 of 1	
REV	ECO #	IMPL BY	APVD BY	DATE	Approved By	Date					

W/WH-150 to 1000-HAC/HACW Refrigeration Circuit

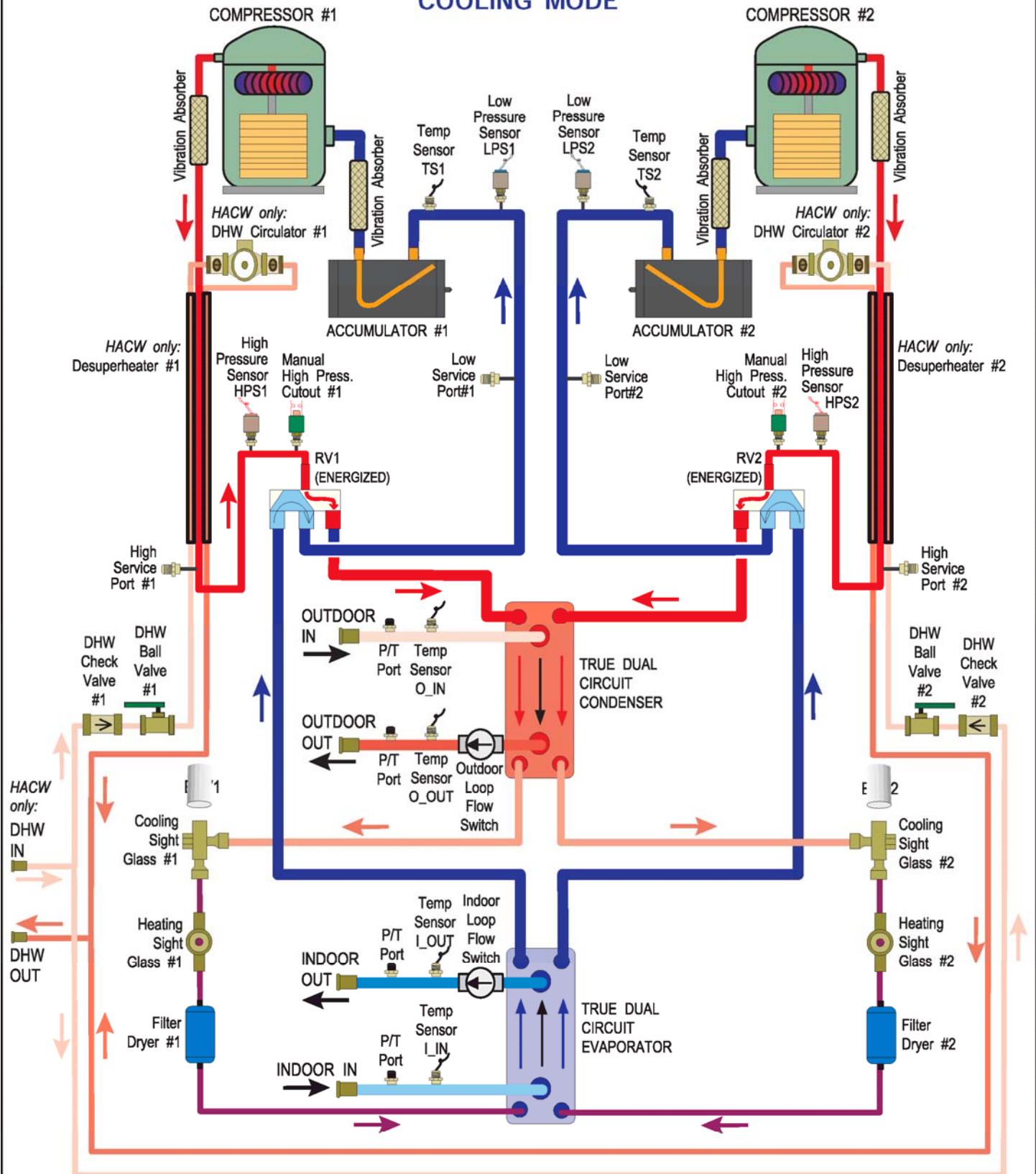
HEATING MODE



					Drawn By Chris Geddes	Date 23-Oct-2012	MARITIME GEOTHERMAL LTD.			170 Plantation Rd. Pettitcodiac, NB E4Z 6H4	
					Checked By Chris Geddes	Date 23-Oct-2012					
02	000303	D. RHEULT	D. RHEULT	1-Jun-2022	Approved By Chris Geddes	(ENG) Date 23-Oct-2012	Drawing Name W/WH-150 to 1000-HAC(W)				
01	Initial Release	C. GEDDES	C. GEDDES	23-Oct-2012	Approved By Chris Geddes	(MFG) Date	Refrigeration Circuit Diagram - Heating Mode				
REV	ECO #	IMPL BY	APVD BY	DATE	Approved By	Date	Size A	Drawing Number 001721RCD	Drawing Rev 02	SHEET 1 of 1	

W/WH-150 to 1000-HAC/HACW Refrigeration Circuit

COOLING MODE



					Drawn By Chris Geddes	Date 23-Oct-2012	MARITIME GEOTHERMAL LTD. 170 Plantation Rd. Petitcodiac, NB E4Z 6H4			
					Checked By Chris Geddes	Date 23-Oct-2012				
02	000303	D. RHEULT	D. RHEULT	1-Jun-2022	Approved By Chris Geddes	(ENG) Date 23-Oct-2012	Drawing Name W/WH-150 to 1000-HAC(W)			
01	Initial Release	C. GEDDES	C. GEDDES	23-Oct-2012	Approved By	(MFG) Date	Refrigeration Circuit Diagram - Cooling Mode			
REV	ECO #	IMPL BY	APVD BY	DATE	Approved By	Date	Size A	Drawing Number 001722RCD	Drawing Rev 02	SHEET 1 of 1

BACnet Interface

The BACnet interface is an **MS/TP** connection via RS-485 twisted pair. BACnet **IP** is not available.

Recommended wire: 22-24 AWG single twisted pair, 100-120 Ohms impedance, 17pF/ft or lower capacitance, with braided or aluminum foil shield, such as Belden 9841 or 89841.

The connector on the control board is a three wire removable screw connector. The signals are as follows:

- A: Communications line (+) (right pin)
- B: Communications line (-) (middle pin)
- C: Ground connection (left pin)

If connecting multiple units to one RS-485 connection point, connect the signal cable from the master building controller to the first unit. Connect the second unit to the first unit (in same connector), connect the third unit to the second unit, and so on until all units are connected (daisy-chain). Remove the TERM jumper (located just above the BACnet connector on control board) from all units except the last one. The shield ground should be connected only to the GND pin of the unit for single unit installations. For multiple units, the shield ground should only be connected to the GND pin of the last unit. The shield grounds for intermediate units should be connected together. The shield ground should be left unconnected at the building controller end for all cases.

Vendor: Maritime Geothermal Ltd.
Vendor ID: 260
Model Name: MGT GEN2 Control Board

The following parameters can be set via the PC App's *Configuration Window*:

- 1) **Baud rate**
9600, 19200, 38400, or 76800
- 2) **MAC address**
Maximum value is 125.
- 3) **Instance number**
Maximum value is 4194303.

The BACnet parameter **Max_Master** has a fixed value of **127** in this device.

BACnet data is available regardless of the selected control method. In order to control the unit via the BACnet interface, set **Control Source** to **BACnet** either by using the PC App's configuration window or the LCD menus.

For tables listing BACnet objects, refer to **Application, Installation, and Service Manual**.

Engineering Guide Specifications

General

The water-to-water heat pump shall be a single packaged dual refrigeration circuit heating / cooling unit. The unit shall be listed by a nationally recognized testing laboratory (NRTL), such as UL, CSA, TUV, or ETL. The unit shall be rated in accordance with applicable standards of the Air Conditioning, Heating, and Refrigeration Institute / International Standards Organization (AHRI/ISO) and/or Canadian Standards Association (CSA). The liquid source water to water heat pump, as manufactured by Maritime Geothermal Ltd. of Petitcodiac, New Brunswick, Canada shall be designed to operate correctly within liquid temperature ranges specified on the "Minimum and Maximum Operating Temperatures" page of this engineering specification document.

Factory Quality

Each unit shall be run tested at the factory with water circulating in both indoor and outdoor loops. Quality control system checks shall include: computerized nitrogen pressurized leak test, evacuation of refrigeration circuit to sustained vacuum, accurate system charge, detailed heating and cooling mode tests, and quality cross check all operational and test conditions to pass/fail criteria. Units tested without water flow are not acceptable. The units shall be warranted by the manufacturer against defects in materials and workmanship in accordance with the warranty section at the end of this document. Optional extended factory warranty coverage may be available.

Cabinet

Each unit shall be constructed with a heavy duty standalone frame, and may optionally be enclosed in a sheet metal cabinet. Frame shall be constructed of powder coated galvanized sheet metal of minimum 11 gauge. Cabinet shall be constructed of powder coated galvanized sheet metal of minimum 16 gauge. Sheet metal gauge shall be higher where structurally required. Design and construction of cabinet shall be such that it is rigid and passes the CSA/UL Loading Test requirements (200 lb roof test and 25 lb guard test). All panels shall be lined with minimum 1 inch [25.4 mm] thick acoustic type glass fiber insulation. All insulation shall meet the fire retardant provisions of NFPA 90A. This material shall also provide acoustical benefit. Any enclosure must have a minimum of six access panels for serviceability of the compressor compartment. Enclosures having fewer than six access panels to compressor/heat exchangers/expansion device/refrigerant piping shall not be acceptable. The electrical box shall have separate holes and knockouts for entrance of line voltage and low voltage control wiring. All factory-installed wiring passing through factory knockouts and openings shall be protected from sheet metal edges at openings by plastic grommets.

Refrigerant Circuit

All units shall contain two separate sealed refrigerant circuits, each containing a hermetic motor scroll compressor, one electronic expansion valve, factory installed high and low pressure sensors, service ports, solid core filter-dryer, sight glass, reversing valve (for reversing units), and suction accumulator. Refrigerant circuits shall share true dual circuit brazed plate heat exchangers.

Compressors shall be specified for heat pump duty with internal isolation consisting of rubber vibration isolators. Compressor motors shall have internal overload protection. Compressor shall be mechanically isolated from rest of refrigerant circuit by suction and discharge vibration absorbers. Compressor shall be equipped with a crankcase/sump heater to prevent liquid refrigerant migration during the off cycle and subsequent flooded starts.

The water to refrigerant heat exchangers shall be of a stainless steel brazed plate design, designed and certified for 650 psig [4480 kPa] working pressure on the refrigerant side and 650 psig [4480 kPa] on the water side. Heat exchangers shall be insulated over all of their outside surface with minimum 3/8" thick closed cell insulation. Insulation consisting of 1/8" closed-cell insulating tape shall not be acceptable.

The electronic expansion valves shall be of stepper-motor rather than pulsing type, and shall provide proper superheat control over the unit's operating range with minimal deviation from superheat setpoint. The valves shall be controlled by electronic superheat controller(s) which provide operator-adjustable superheat and real-time LED/LCD display of current superheat. Superheat shall be determined through the suction pressure-temperature method. Externally mounted pressure controlled water regulating flow valves or thermostatic expansion valves (TXV's) in place of electronic expansion valves are not acceptable.

The suction accumulators shall be insulated with minimum 3/8" thick closed cell insulation to prevent condensation. The accumulator's internal oil return port shall be sized properly for the unit's operating range. To ensure proper oil return, suction accumulator shall not be 'oversized'.

Piping and Connections

The unit shall have two sets of primary water in and water out connections (outdoor and indoor). The primary connection type shall be stainless steel pipe for Victaulic connection.

All internal water and refrigerant piping shall be insulated with minimum 3/8" thick closed cell insulation. Insulation consisting of 1/8" closed-cell insulating tape shall not be acceptable.

Electrical

Controls and safety devices shall be factory wired and mounted within the unit. Controls shall include 24 volt alternating current (24VAC) activated compressor contactors, reversing valves, and 24VAC 100VA transformer with built in circuit breaker or fused on both primary and secondary sides. Units shall be name-plated for use with time delay fuses or circuit breakers. Unit controls shall be 24VAC and provide heating or cooling as required by the remote thermostat or controller. 3-phase protection shall be present in each unit to protect the compressor against loss of phase and reverse rotation. 3-phase protection shall be factory installed. Unit shall have dry contacts for controlling loop circulating pumps via an external 24VAC contactor. Unit shall provide remote fault indication to the control system via serial communication and fault messages on front panel LCD display.

Unit Control

The control system shall have the following features:

1. Anti-short cycle time delay on compressor operation. Time delay shall be a minimum of 5 minutes, for both thermostat demand and safety control reset starts. An override shall be provided to disable this delay for unit commissioning and testing purposes.
2. Random compressor start delay of 0-120 seconds on unit power up to facilitate starting multiple units after a power failure.
3. Flow switch on outdoor loop, and also on indoor loop for reversing units.
4. Compressor shutdown for high or low refrigerant pressures, low flow conditions and for phase protection faults.
5. Automatic intelligent reset: unit shall automatically restart 5 minutes after trip if the fault has cleared. Should a fault reoccur 3 times sequentially then permanent lockout shall occur, requiring cycling of the power to the unit in order to reset.
6. Manual reset high pressure in case of electronic board failure.
7. The low pressure shall not be monitored for the first 90 seconds after a compressor start to prevent nuisance safety trips.
8. 2 x 16 backlit Liquid Crystal Display (LCD) and four buttons for limited data access. Unit may be configured for stand alone operation with optional temperature sensor(s)
9. Universal Serial Bus (USB) port for full data access and diagnostic information, including real-time charting and data-logging

Maritime Geothermal works continually to improve its products. As a result, the design and specifications of any product may be changed without notice. Please contact Maritime Geothermal at 1-506-756-8135 or visit www.nordicghp.com for latest design and specifications. Purchaser's approval of this data set signifies that the equipment is acceptable under the provisions of the job specification. Statements and other information contained herein are not express warranties and do not form the basis of any commercial contract or other agreement between any parties, but are merely Maritime Geothermal's statement of opinion regarding its products.

Warranty: W/WH-Commercial Series

COMMERCIAL LIMITED EXPRESS WARRANTY

Unless a statement is specifically identified as a warranty, statements made by Maritime Geothermal Ltd. ("MG") or its representatives relating to MG's products, whether oral, written or contained in any sales literature, catalogue or agreement, are not express warranties and do not form a part of the basis of the bargain, but are merely MG's opinion or commendation of MG's products.

SET FORTH HERE IS THE ONLY EXPRESS WARRANTY THAT APPLIES TO MG'S PRODUCTS. MG MAKES NO WARRANTY AGAINST LATENT DEFECTS. MG MAKES NO WARRANTY OF MERCHANTABILITY OF THE GOODS OR OF THE FITNESS OF THE GOODS FOR ANY PARTICULAR PURPOSE.

LIMITED EXPRESS COMMERCIAL WARRANTY - PARTS

MG warrants its Commercial Class products, purchased and retained in the United States of America and Canada, to be free from defects in material and workmanship under normal use and maintenance as follows:

- (1) Air conditioning, heating and/or heat pump units built or sold by MG ("MG Units") for one (1) year from the Warranty Inception Date (as defined below).
- (2) Thermostats, auxiliary electric heaters and geothermal pumping modules built or sold by MG, when installed with MG Units, for five (5) years from the Warranty Inception Date (as defined below).
- (3) Sealed refrigerant circuit components of MG Units (which components only include the compressor, refrigerant to air/water heat exchangers, reversing valve body and refrigerant metering device) for one (1) year from the Warranty Inception Date (as defined below).
- (4) Other accessories, when purchased separately, for (1) year from the date of shipment from MG.

The "Warranty Inception Date" shall be the date of original unit installation, as per the date on the installation Startup Record; or sixty (60) days from date of unit shipment from MG, whichever comes first.

To make a claim under this warranty, parts must be returned to MG in Petitcodiac, New Brunswick, freight prepaid, no later than ninety (90) days after the date of the failure of the part. If MG determines the part to be defective and within MG's Limited Express Commercial Warranty, MG shall, when such part has been either replaced or repaired, return such to a factory recognized distributor, dealer or service organization, freight prepaid. The warranty on any part repaired or replaced under warranty expires at the end of the original warranty period.

LIMITED EXPRESS COMMERCIAL WARRANTY - LABOUR

MARITIME GEOTHERMAL LTD. will not be responsible for any consequential damages or labour costs incurred.

This warranty does not cover and does not apply to:

- (1) Air filters, fuses, refrigerant, fluids, oil.
- (2) Products relocated after initial installation.
- (3) Any portion or component of any system that is not supplied by MG, regardless of the cause of the failure of such portion or component.
- (4) Products on which the unit identification tags or labels have been removed or defaced.
- (5) Products on which payment to MG, or to the owner's seller or installing contractor, is in default.
- (6) Products subjected to improper or inadequate installation, including but not limited to:
 - Indoor or outdoor loop flow lower than listed in engineering specification or as expressly approved by MARITIME GEOTHERMAL LTD.
 - Operating the heat pump either manually or with automated controls so that the unit is forced to function outside its normal operating range
 - Disabling of safety controls
 - Insufficient loop antifreeze concentration for loop temperature, or antifreeze concentration incorrectly set in control board
 - Fouled heat exchangers due to poor water quality
 - Failure to use strainers or clean them regularly
 - Impact or physical damage sustained by the heat pump
 - Poor refrigeration maintenance practices, including brazing without nitrogen flow, or using wrong braze/flux
 - Incorrect voltage or missing phase supplied to unit
 - Unit modified electrically or mechanically from factory supplied condition
 - Water quality outside of recommended limits (e.g. salinity or pH)
 - Unit not mounted with supplied anti-vibration grommets when specified for use
 - Corrosion damage due to corrosive ambient environment
 - Failure due to excessive cycling caused by improper mechanical setup or improperly programmed external controller
 - Physical loads or pressures placed on unit from external equipment
- (7) Mold, fungus or bacteria damage
- (8) Corrosion or abrasion of the product.
- (9) Products supplied by others.
- (10) Electricity or fuel, or any increases or unrealized savings in same, for any reason whatsoever.

MG is not responsible for:

- (1) The costs of fluids, refrigerant or system components **supplied by others**, or associated **labour** to repair or replace the same, which is incurred as a result of a defective part covered by MG's Limited Commercial Warranty.
- (2) The costs of **labour**, refrigerant, materials, or service incurred in diagnosis and removal of defective part, or in obtaining and replacing the new or repaired part.
- (3) Transportation costs of the defective part from the installation site to MG, or of the return of that part if warranty coverage declined.
- (4) The costs of normal maintenance.

MG'S LIABILITY UNDER THE TERMS OF THIS LIMITED WARRANTY SHALL APPLY ONLY TO THE MG UNITS REGISTERED WITH MG THAT BEAR THE MODEL AND SERIAL NUMBERS STATED ON THE INSTALLATION START UP RECORD, AND MG SHALL NOT, IN ANY EVENT, BE LIABLE UNDER THE TERMS OF THIS LIMITED WARRANTY UNLESS THIS INSTALLATION START UP RECORD HAS BEEN ENDORSED BY OWNER & DEALER/INSTALLER AND RECEIVED BY MG LIMITED WITHIN 90 DAYS OF START UP.

Limitation: This Limited Express Commercial Warranty is given in lieu of all other warranties. If, notwithstanding the disclaimers contained herein, it is determined that other warranties exist, any such express warranty, including without limitation any express warranties or any implied warranties of fitness for particular purpose and merchantability, shall be limited to the duration of the Limited Express Commercial Warranty.

LIMITATION OF REMEDIES

In the event of a breach of the Limited Express Commercial Warranty, MG will only be obligated at MG's option to repair the failed part or unit, or to furnish a new or rebuilt part or unit in exchange for the part or unit which has failed. If after written notice to MG's factory in Petitcodiac, New Brunswick of each defect, malfunction or other failure, and a reasonable number of attempts by MG to correct the defect, malfunction or other failure, and the remedy fails of its essential purpose, MG shall refund the purchase price paid to MG in exchange for the return of the sold good(s). Said refund shall be the maximum liability of MG. **THIS REMEDY IS THE SOLE AND EXCLUSIVE REMEDY OF THE BUYER OR PURCHASER AGAINST MG FOR BREACH OF CONTRACT, FOR THE BREACH OF ANY WARRANTY OR FOR MG'S NEGLIGENCE OR IN STRICT LIABILITY.**

LIMITATION OF LIABILITY

MG shall have no liability for any damages if MG's performance is delayed for any reason or is prevented to any extent by any event such as, but not limited to: any war, civil unrest, government restrictions or restraints, strikes, or work stoppages, fire, flood, accident, shortages of transportation, fuel, material, or labour, acts of God or any other reason beyond the sole control of MG. **MG EXPRESSLY DISCLAIMS AND EXCLUDES ANY LIABILITY FOR CONSEQUENTIAL OR INCIDENTAL DAMAGE IN CONTRACT, FOR BREACH OF ANY EXPRESS OR IMPLIED WARRANTY, OR IN TORT, WHETHER FOR MG'S NEGLIGENCE OR AS STRICT LIABILITY.**

OBTAINING WARRANTY PERFORMANCE

Normally, the dealer or service organization who installed the products will provide warranty performance for the owner. Should the installer be unavailable, contact any MG recognized distributor, dealer or service organization. If assistance is required in obtaining warranty performance, write or call Maritime Geothermal Ltd.

NOTE: Some states or Canadian provinces do not allow limitations on how long an implied warranty lasts, or the limitation or exclusions of consequential or incidental damages, so the foregoing exclusions and limitations may not apply to you. This warranty gives you specific legal rights, and you may also have other rights which vary from state to state and from Canadian province to Canadian province.